



CITY OF CARMEL-BY-THE-SEA

San Carlos Landscaped Median Islands Project,
Including Bike Route and Paving along San Carlos

Public Workshop #2

Sunset Center

January 26, 2023

Note:

- Notifications for this meeting were issued to all properties within 300-feet of the limits of the proposed project, posted in the Pine Cone, and included in Friday Letter



Outline

- Introductions
- Project Overview, History, Funding
- Bike Route, Circulation Element, Classifications
- Traffic Calming Measures
- Proposed Median Islands and Landscaping Themes
- Public Comments from Workshop #1 and Revised Medians
- Forest & Beach Commission Comments
- FAQs
- Questions, Answers, and Voting!



Project Overview

Council-Approved 3 Capital Improvement Projects in FY 2019/20:

1) Annual Paving Project:

- ✓ **San Carlos** Micro-Surfacing Treatment, Eighth to Thirteenth Avenues
- ✓ Junipero Street, Third to Ocean
- ✓ Sidewalk Repairs
- ✓ San Antonio, Fourth to Eighth (pending budget)
- ✓ Monte Verde, Fourth to Ocean (pending budget)

2) Bike Route along **San Carlos** – Eighth to Thirteenth Avenues

3) **San Carlos** Landscaped Median Islands, number, locations TBD



Project Overview - Continued

- 90% Designed Pre-Covid
- Public Workshop #1 early 2020
- Project put on Hold during Pandemic, Resumed last Fall, Finished Design
- Forest & Beach Commission Meeting #1, November 2022
- One Construction Project Planned: April – June 2023
- Overall \$962k Budget (\$335k external funds); \$800k for Construction
- Pavement Condition Index per “Street Saver”:
76 (8th-11th), 85 (11th -13th) = Cost-effective candidates for resurfacing
- Categorically Exempt per CEQA Section 15301c
- 85% Traffic Speeds: 2020 = 25 mph, 2023 = 25 mph (2,445 Veh/2 days)

Circulation Element

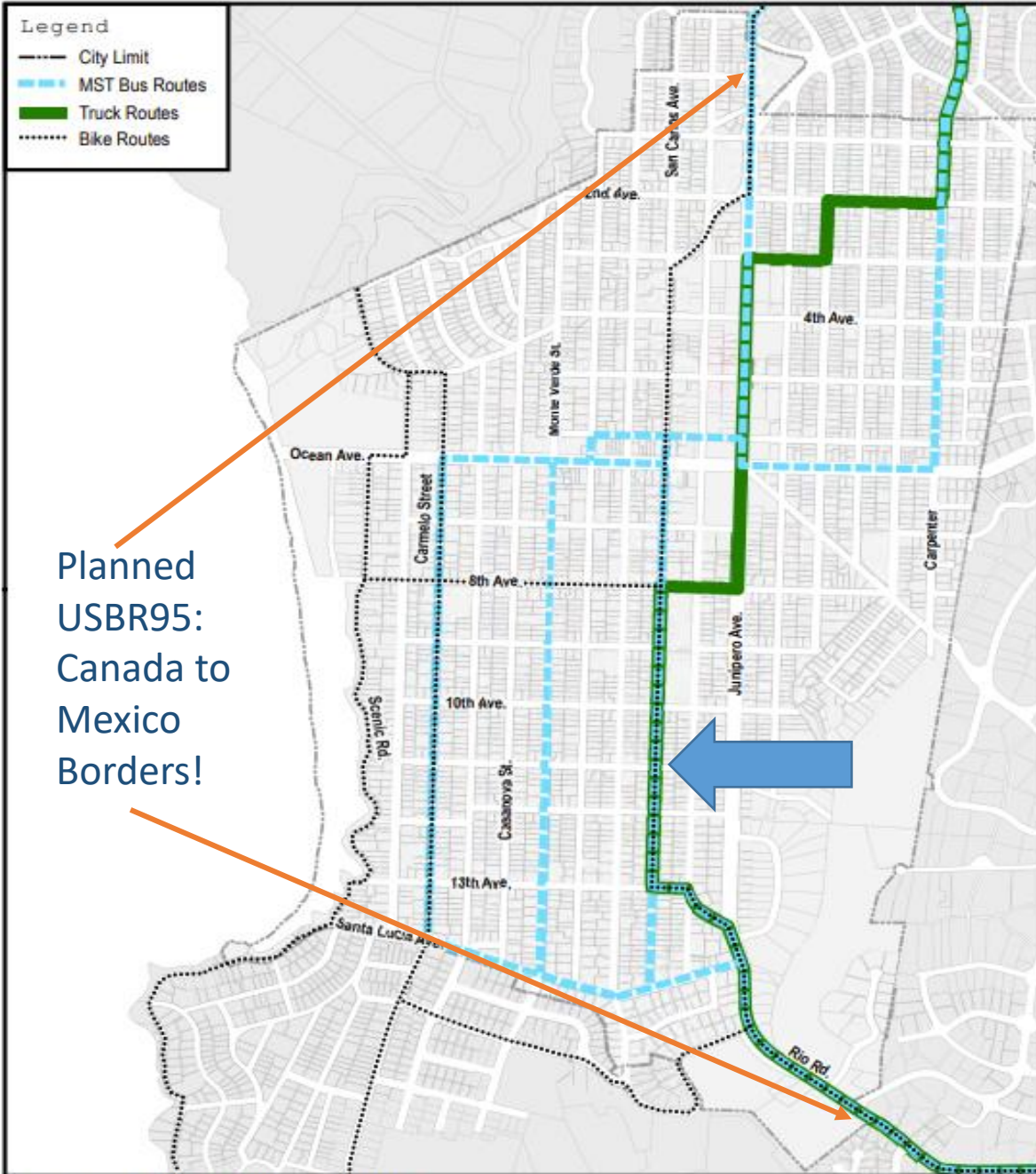
Objective O2-6

Encourage and participate in programs promoting alternative modes of transportation in Carmel.

Policy P2-29

Evaluate pedestrian, bike, and local mass transit improvements. Implement improvements when appropriate through the Capital Improvement Program.

San Carlos Bike Route, Eighth to Thirteenth Avenues, will be first official Bike Route in Carmel and will meet CalTrans and TAMC standards for signage and striping. This segment is the “hub” upon which future bike routes will extend north, south, east and west.



Source: City of Carmel (2009), MST (2009), Carmel Bike Plan (1997)



Climate Action Plan Measures

Climate Action Plan Measures:

2.1 Provide alternative transportation options. Actions include reducing reliance on automobiles...

2.1.2: Create Safe Bike Routes around the City. Develop customized bike routes to improve bike transit. Provide signage, reduce speed limits as necessary, and develop safety education programs on “sharing the road” with bikes.



CalTrans Bike Classifications



Class I - Shared-Use Paths

Class I

Provides a completely separated right-of-way for exclusive use of bicycles and pedestrians



CalTrans Bike Classifications



Class II - Standard Bike Lanes



Class II

Provides a dedicated, striped lane for one-way bike travel



CalTrans Bike Classifications



Class III - Shared Lanes

Class III
Provides a Shared Use
with vehicle traffic



W16-1P





Traffic Calming Measures

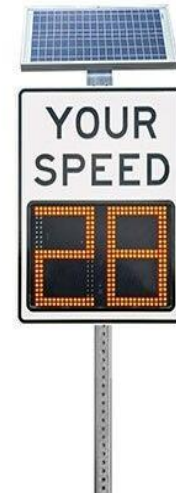
- **Undesirable:**

- ❖ Reduce Speed Limit
- ❖ More Stop Signs
- ❖ More Pedestrian Crosswalks
- ❖ Speed Bumps or Speed Humps
- ❖ Speed Feedback Signs



- **Feasible:**

- ✓ Landscaped Median Islands
- ✓ Bulb Outs





San Carlos Median Islands

- **Funding:**

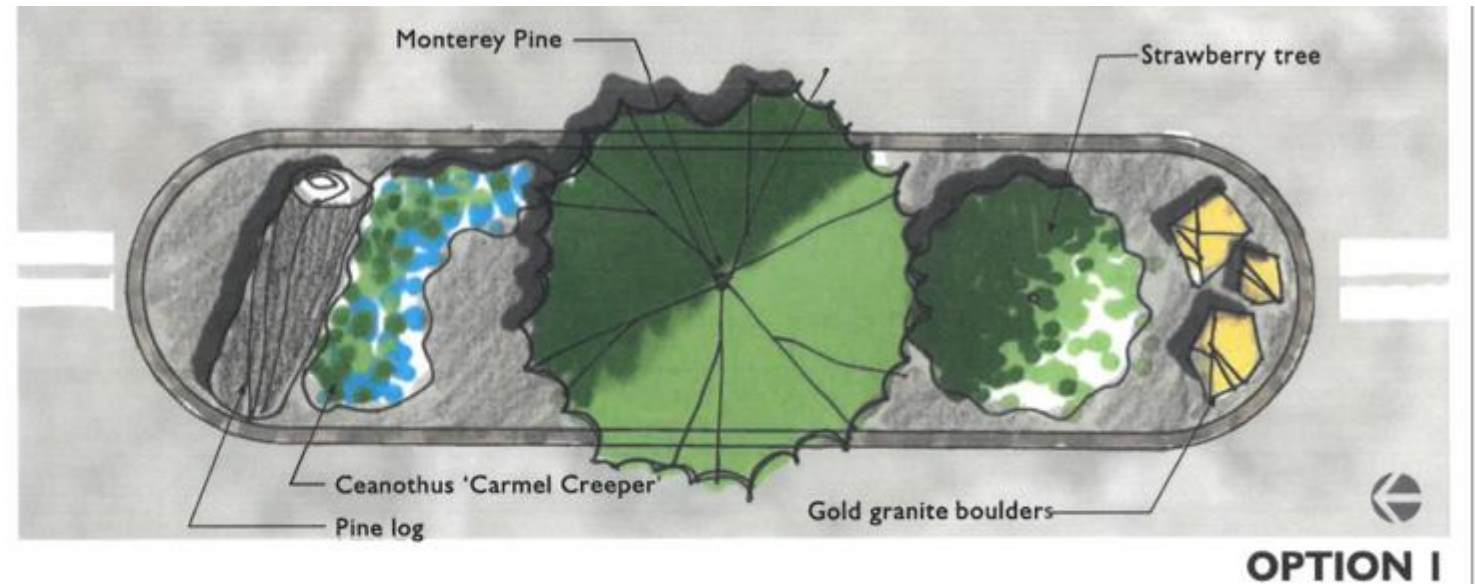
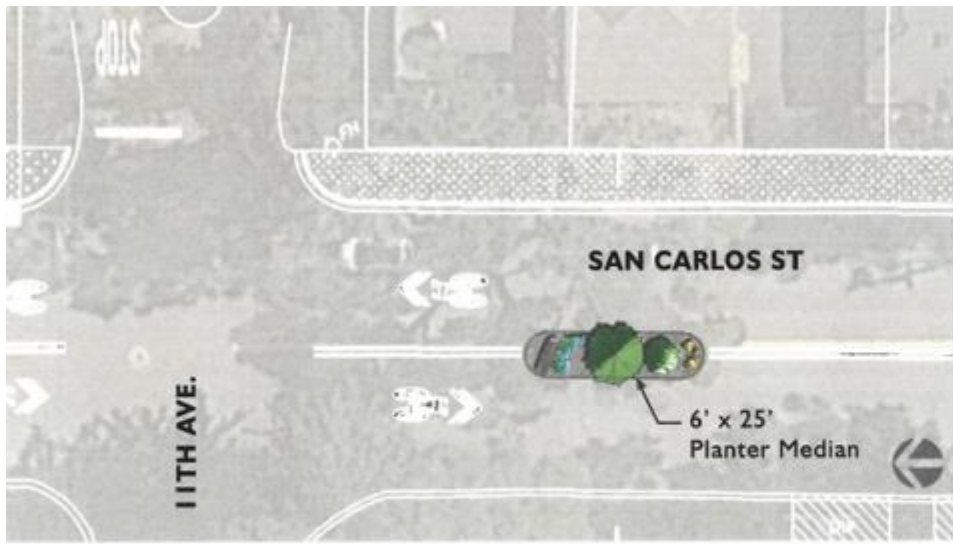
▪ City of Carmel	\$17,000
▪ Barbara Livingston (Request)	9,500
▪ Friends or Lower San Carlos	4,000
▪ Friends of Carmel Forest	<u>3,500</u>
Total Budget	\$34,000

- **Expenses (\$20k+):**

- Neill Engineering: Design Plans, Traffic Evaluation, Revisions for Public Comments
- Gates & Associates: Landscaping Themes (Austere, Lush), Renderings = \$20k
- Construction Contractor: Cut Pavement, Excavate, Rolled Berms = \$14k+
- Trees, Hardscape, Shrubs = Public Works/Forestry Budget, post construction
- Planting, Watering, Maintenance = Public Works/Forestry and/or Volunteers



2, 25' Islands – Landscaping, 1



CARMEL-BY-THE-SEA PLANTER MEDIANS
CARMEL-BY-THE-SEA, CALIFORNIA

PLANTER MEDIAN ON SAN CARLOS ST. BETWEEN 11TH AVE. AND 12TH AVE.

JANUARY 22, 2019

- Pine and Strawberry Trees
- Granite Boulders and Pine Log
- Carmel Creeper
- Loss of 8 Parking Spaces



2, 25' Islands – Landscaping, 1



EXISTING - SAN CARLOS LOOKING SOUTH FROM 11TH AVE.

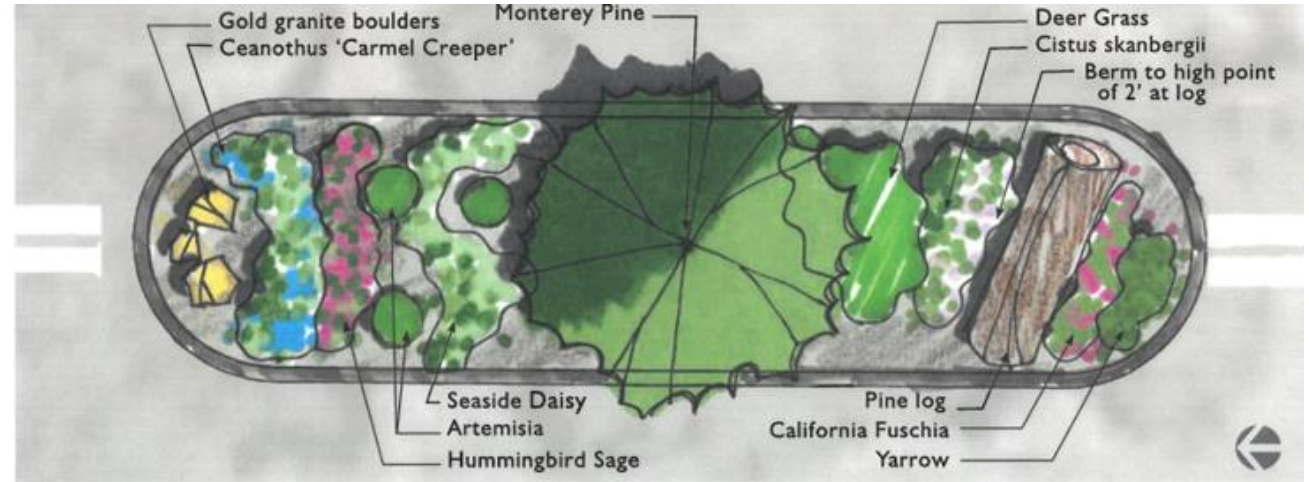
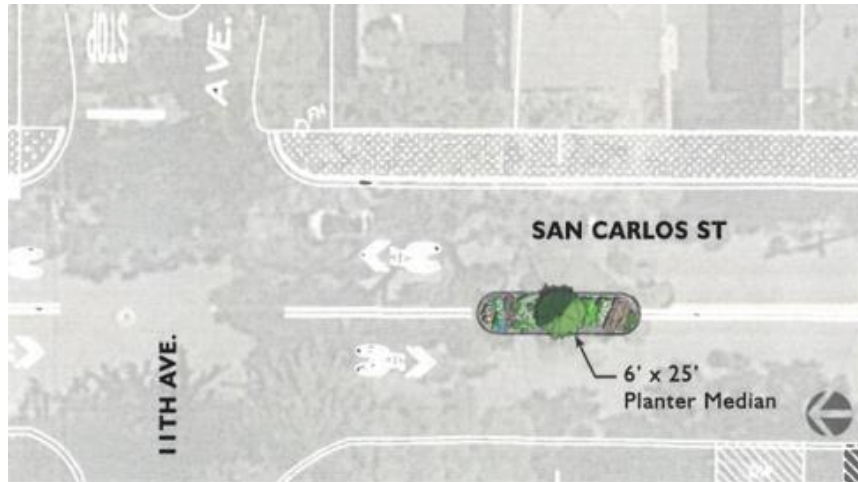


PHOTOSIMULATION OF PROPOSED - SAN CARLOS LOOKING SOUTH FROM 11TH AVE.

- Pine and Strawberry Trees
- Granite Boulders and Pine Log
- Carmel Creeper
- Loss of 8 Parking Spaces



2, 25' Islands – Landscaping 2



OPTION 2



CARMEL-BY-THE-SEA PLANTER MEDIANS
CARMEL-BY-THE-SEA, CALIFORNIA

PLANTER MEDIAN ON SAN CARLOS ST. BETWEEN 11TH AVE. AND 12TH AVE.

JANUARY 22, 2019

- Pine Tree
- Granite Boulders and Pine Log
- 6-8 Shrubs: Carmel Creeper + Seaside Daisy, Hummingbird Sage, Yarrow, Deer Grass, California Fuschia
- Loss of 8 Parking Spaces



2, 25' Islands – Landscaping 2



EXISTING - SAN CARLOS LOOKING SOUTH FROM 11TH AVE.



PHOTOSIMULATION OF PROPOSED - SAN CARLOS LOOKING SOUTH FROM 11TH AVE.

- Pine Tree
- Granite Boulders and Pine Log
- 6-8 Shrubs: Carmel Creeper + Seaside Daisy, Hummingbird Sage, Yarrow, Deer Grass, California Fuchsia
- Loss of 8 Parking Spaces



Public Workshop #1

- January 2020, Sunset Center, Well-Attended
- Presented San Carlos Improvements: Paving, Bike Route, Medians
- Displayed Plans – Proposed 2, 25-foot long Medians:
 - 60' South of Eleventh
 - 60' South of Twelfth
 - Loss of 6-8 parking spaces
- Forester presented Landscaping Themes, Options 1 and 2
- **Paving and Bike Route Components:**
 - No opposition to micro-surfacing pavement
 - Prefer shared Bike Route (Class III) vs. dedicated Bike Lanes (Class II)
 - Strong opposition for any loss of Parking Spaces
 - Concerns about shared Bike Route along a Truck/Bus Route
 - Concerns about perceived speeding – Currently and after the project

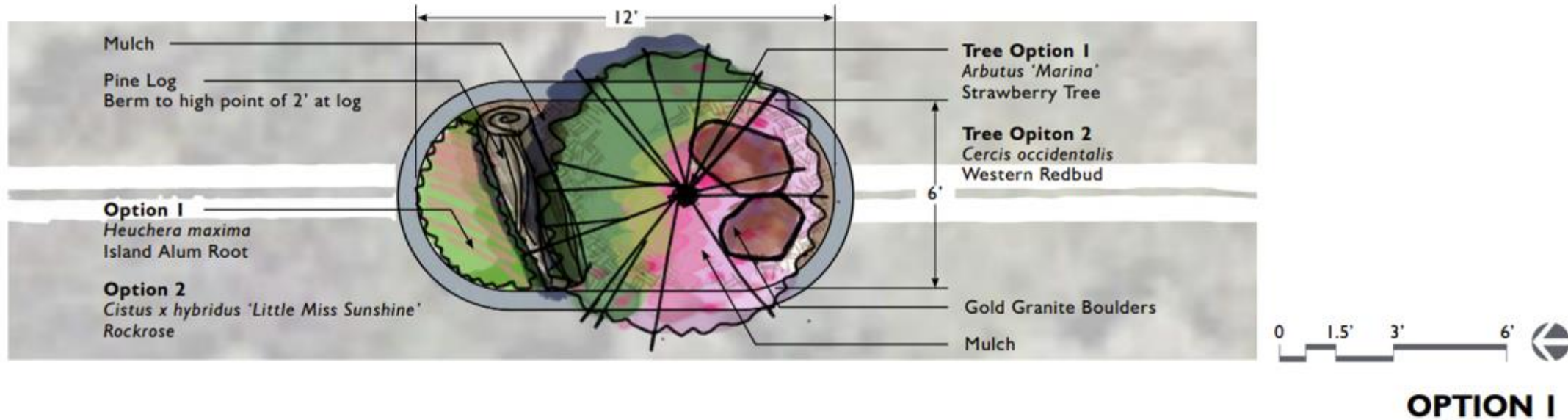


Public Workshop #1 – Comments

- **Median Islands:**
 - Comments from wider geographic area
 - Some residents opposed the Medians
 - Most supported beautification and traffic calming along San Carlos
 - Preference for a greater number of smaller islands
 - Preference for the “plush” landscaping palette (Option 2)
 - Support for 6-foot wide medians w/rolled berms
 - Concerns about trucks and buses damaging tree limbs
 - Concerns about ongoing landscape maintenance
 - Concerns for potential traffic re-routing (i.e. over to Junipero)



4, 12' Islands – Landscaping, 1



- Strawberry or Western Redbud Tree
- Granite Boulders and Pine Log
- Island Alum Root and/or Rockrose
- Loss of 8 Parking Spaces

Option 1



4, 12' Islands – Landscaping, 1



EXISTING - SAN CARLOS LOOKING SOUTH FROM 11TH AVE.



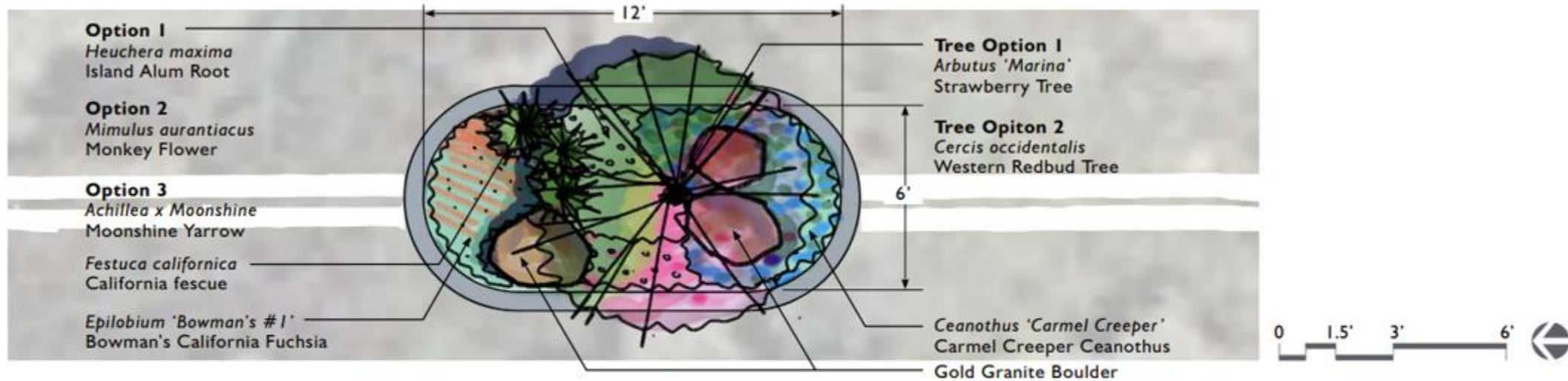
PHOTOSIMULATION OF PROPOSED - SAN CARLOS LOOKING SOUTH FROM 11TH AVE.

- Strawberry or Western Redbud Tree
- Granite Boulders and Pine Log
- Island Alum Root and/or Rockrose
- Loss of 8 Parking Spaces

Option 1



4, 12' Islands – Landscaping, 2



OPTION 2

- Strawberry or Western Redbud Tree
- Granite Boulders
- Carmel Creeper + 2–3 Shrubs: Island Alum Root, Monkey Flower, Moonshine Yarrow, California Fescue, and/or California Fuchsia
- Loss of 8 Parking Spaces

Option 1



4, 12' Islands – Landscaping, 2



EXISTING - SAN CARLOS LOOKING SOUTH FROM 11TH AVE.

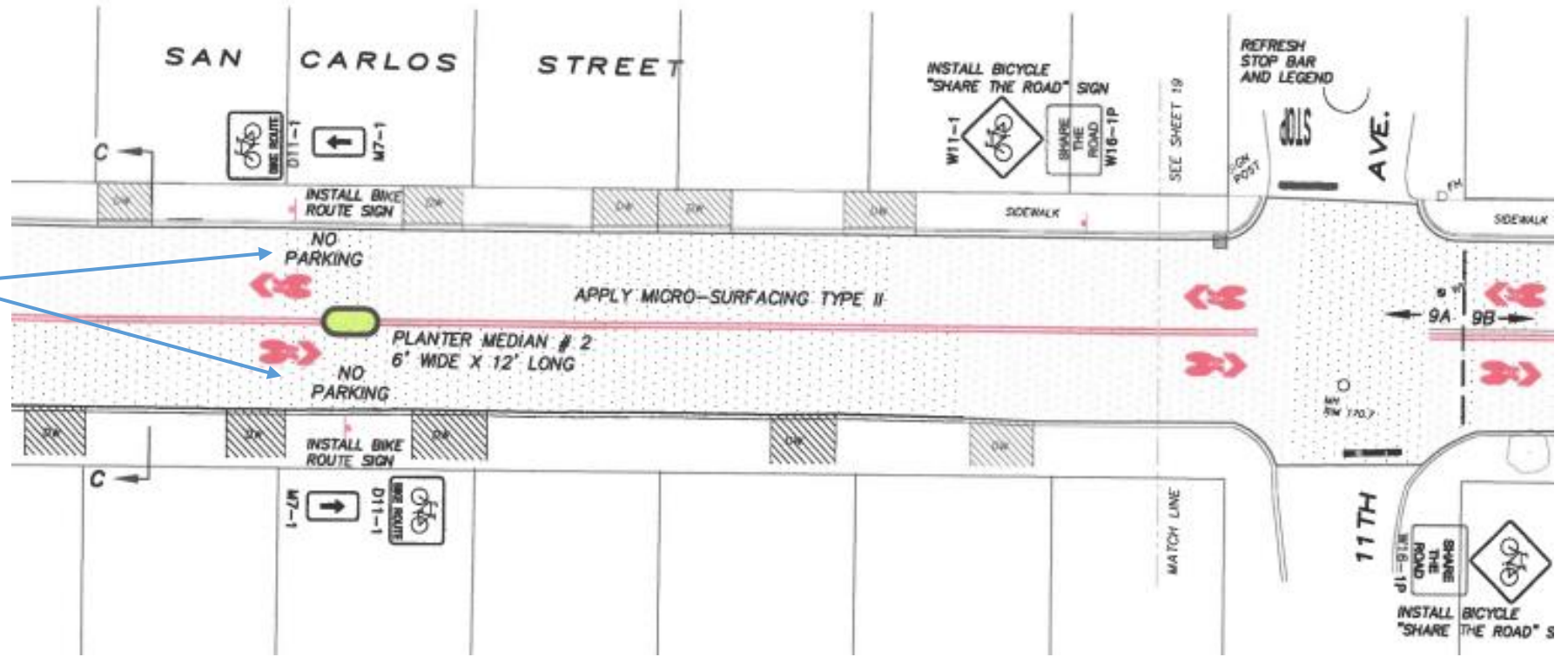


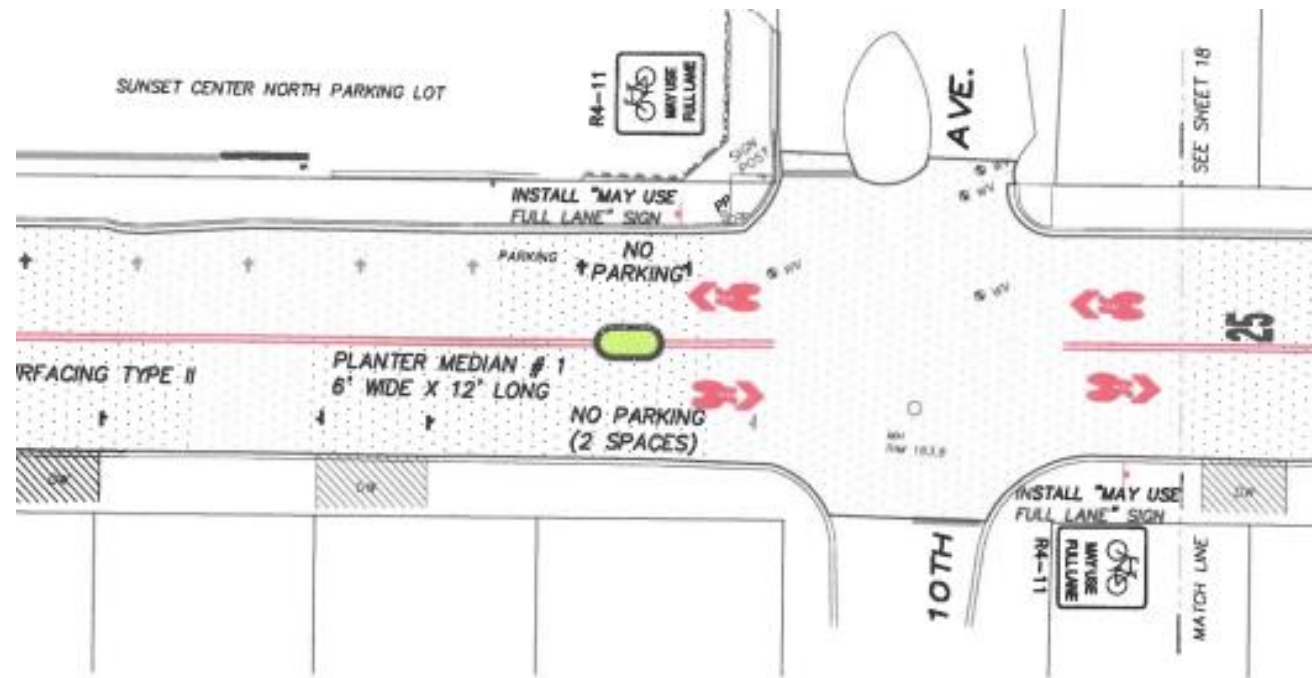
PHOTOSIMULATION OF PROPOSED - SAN CARLOS LOOKING SOUTH FROM 11TH AVE.

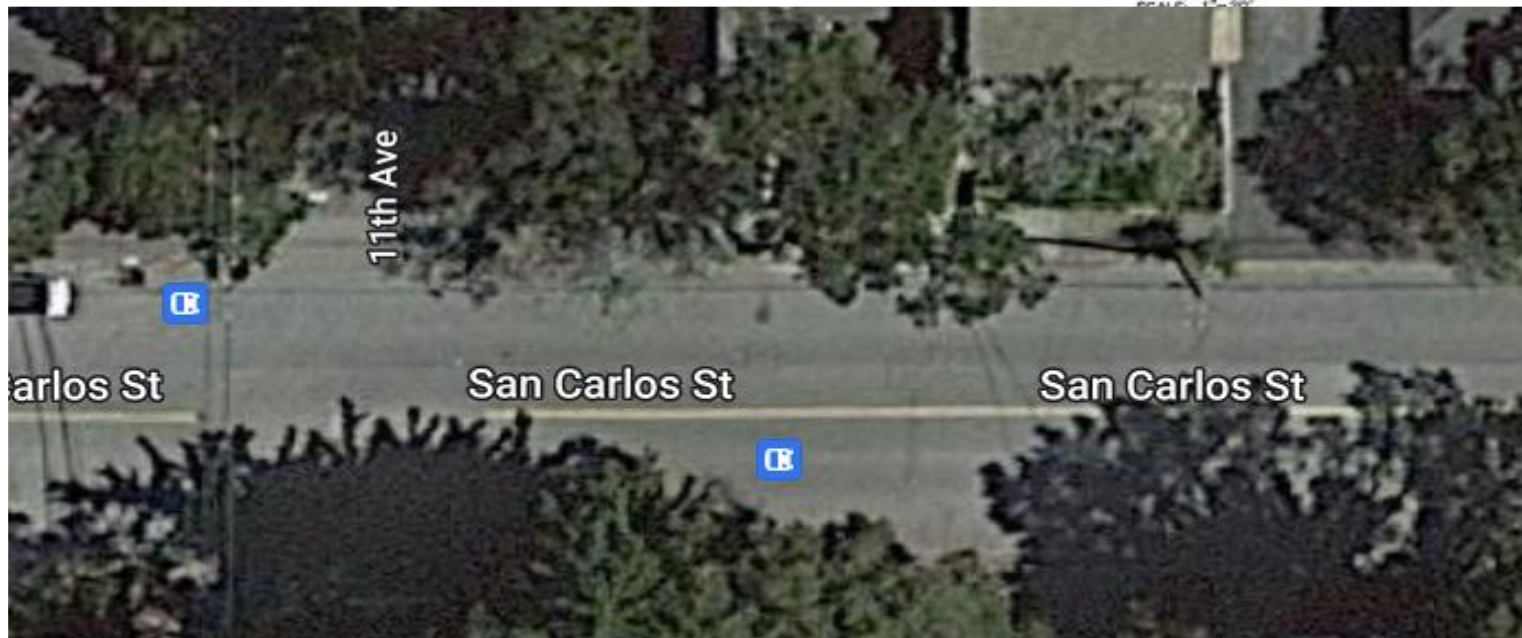
- Strawberry or Western Redbud Tree
- Granite Boulders
- Carmel Creeper + 2–3 Shrubs: Island Alum Root, Monkey Flower, Moonshine Yarrow, California Fescue, and/or California Fuchsia
- Loss of 8 Parking Spaces

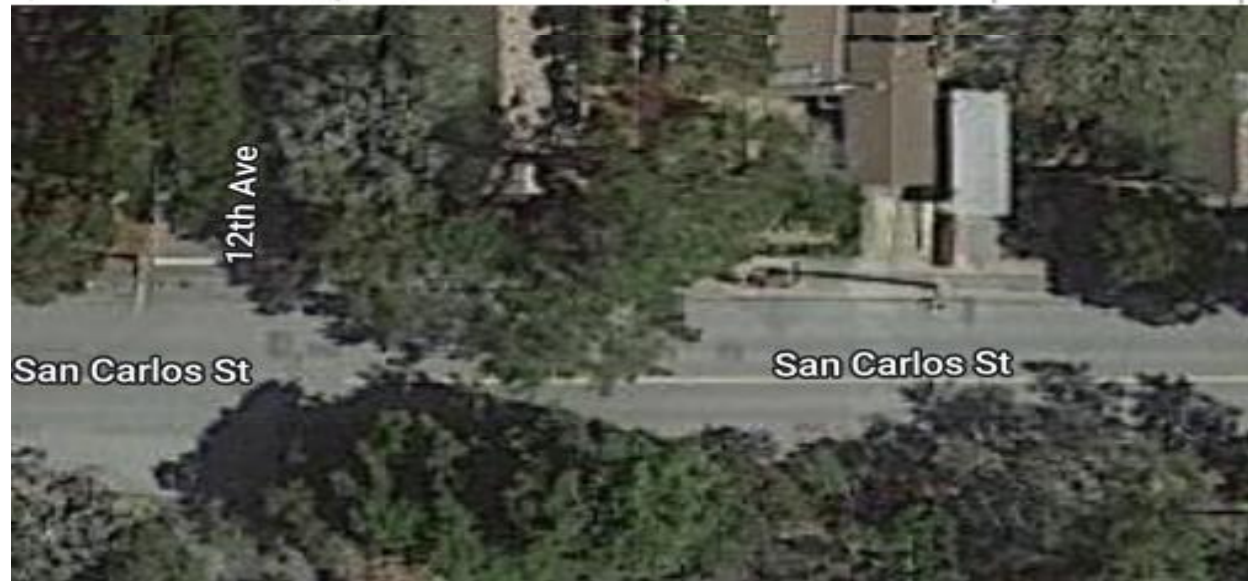
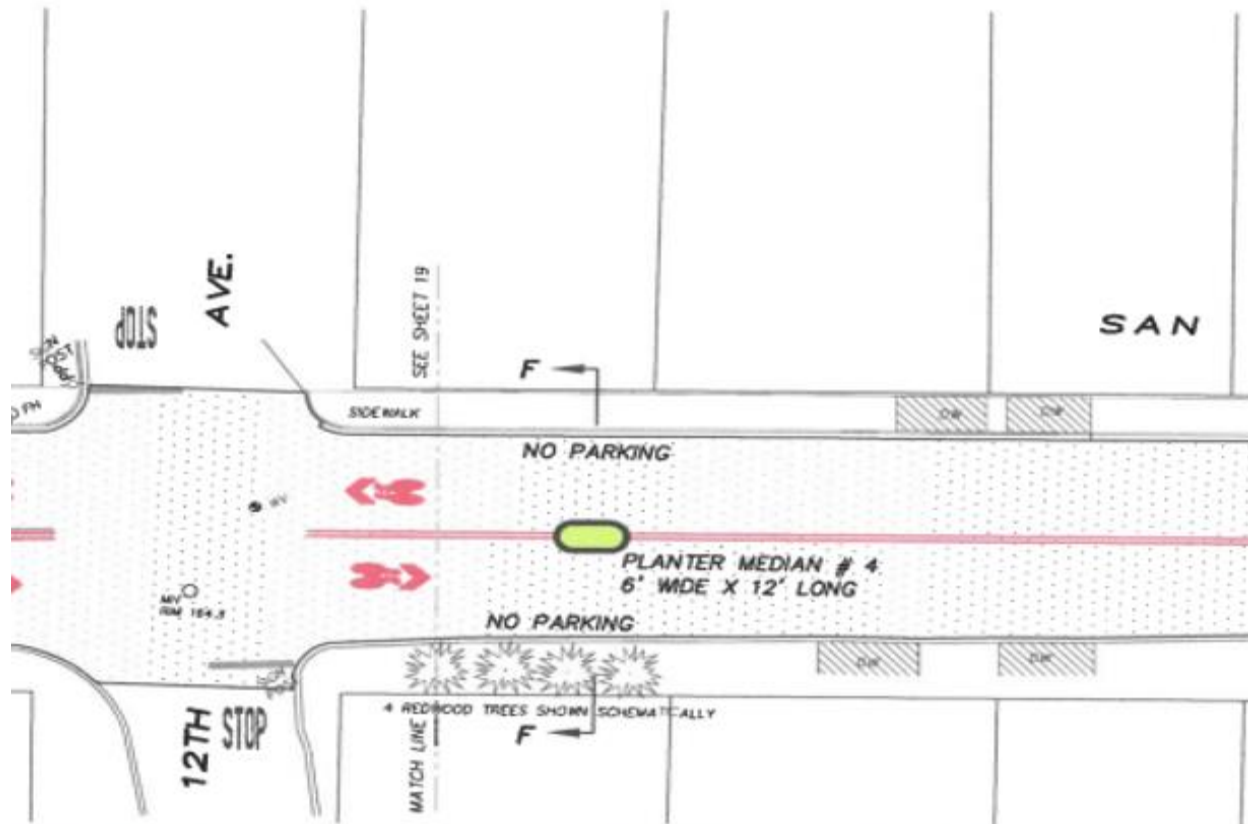
Option 1

No Parking Spaces directly across from Medians











Forest & Beach Commission Meeting

- November 10, 2022, Staff Report available on Website
- Similar Presentation – Sought Public Comments and Commission’s preference on number of islands (2, 4, 0) and landscaping theme
- 3 Written Comments, 12 Verbal Comments: All 15 Opposed medians. Most lived along San Carlos Street.
- Commission requested to proceed with this planned Workshop #2 and return to Commission
- Three “newer” Comments/Questions emerged:
 - a. Why didn’t we present 4 medians at Workshop #1?
 - b. No one supported medians at #1 (we didn’t ask where they live)
 - c. Suggest to use remaining funds for another project



Frequently Asked Questions

1. Are the Medians a “Done Deal”?

No! Staff is not advocating for or against the islands. Council decision based on YOUR feedback.

2. Was a Traffic Study Done?

Traffic evaluations, yes, formal report, no.

3. Will north-south traffic Shift to Mission and/or Junipero?

Only San Carlos is Bus/Truck route. Sunset Center is on San Carlos.

4. Why not More Islands?



- *Ingress and egress from every private driveway, from either direction*
- *Truck and Emergency Vehicle turn movements at every intersection*
- *Cost for installation and maintenance*

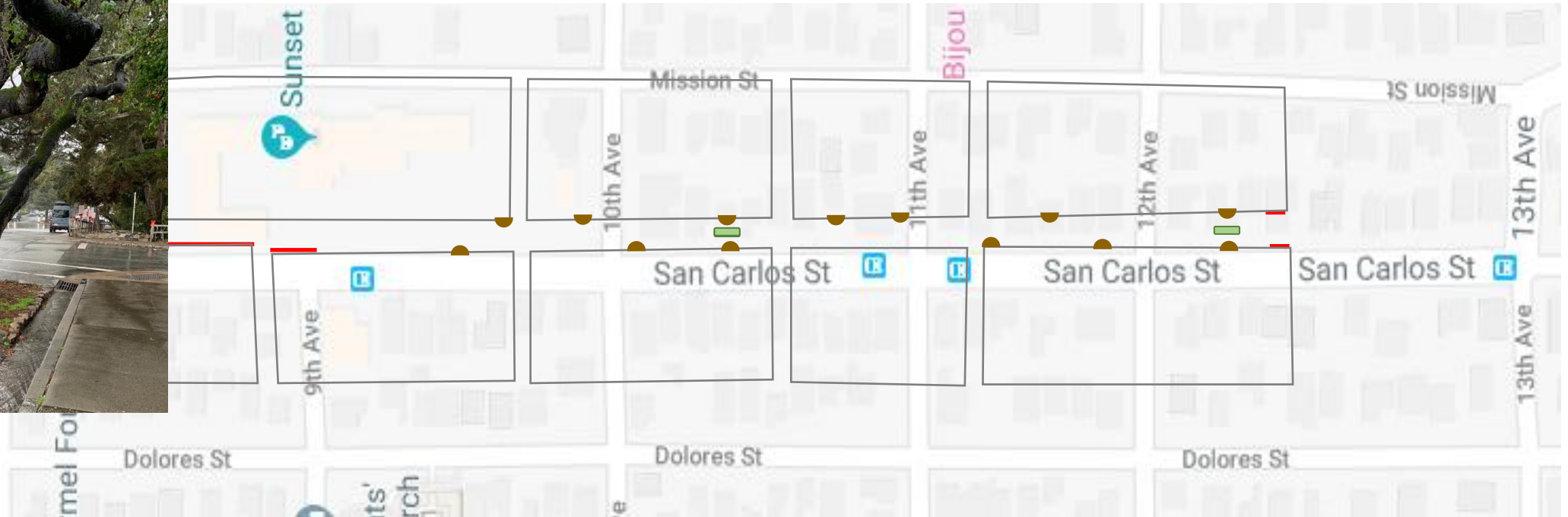
5. Why can't we install Bulb Outs instead of Median Islands?

6. Can we Plant more Trees along the Sidewalks?

Courtesy: Francisco Belaunzaran

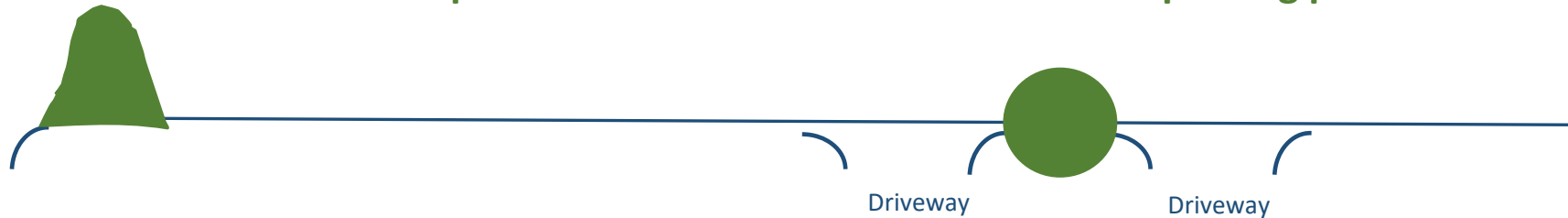
Street Planters on San Carlos between 9th and 13th

-  Possible medians
-  Possible planters



- **Not Project Scope**
- **More Cost**
- **Drainage**
- **Utility Conflicts**
- **Sight Visibility**
- **Maintenance**

Planters can be positioned to minimize or avoid loss of parking places



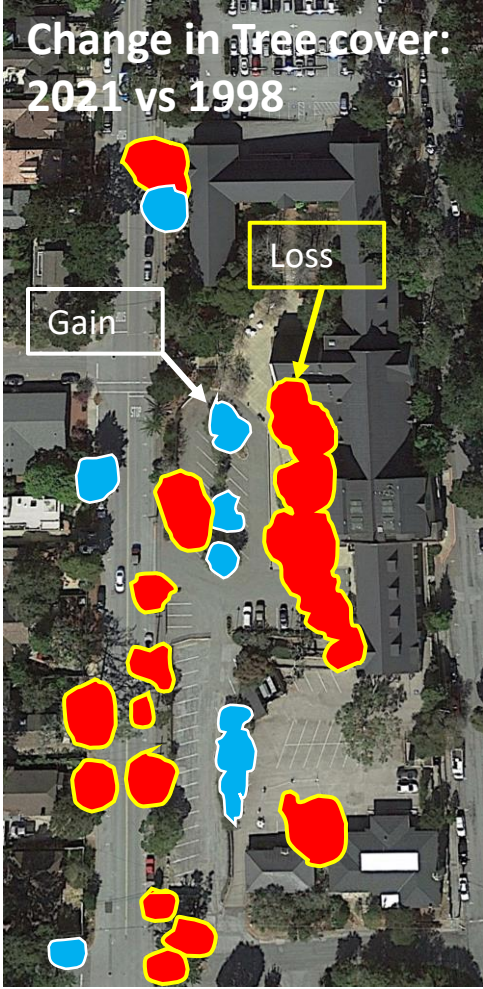
Courtesy: Francisco Belaunzaran

San Carlos and the Sunset Center: Severe Tree Loss

- San Carlos between 10th and 9th, and the Sunset Center, show a dramatic loss of tree cover between 1998 and 2021:

Yes, We will plant more trees, after the Project, as part of our Urban Forest Master Plan Project!

San Carlos Satellite Image- Google Earth





Next Steps

Forest & Beach Commission Meeting #2

- Tentative March 9th

City Council Meeting, April 2023 +/-

- Notify Council about all prior Public Comments
- Final opportunity for additional Comments
- Confirm Median Islands, if any
- Award Construction Contract

Wrap Up

- Presentation will be available on City Website tomorrow
- Reminder – No Decision Tonight!
- Now open to Questions about this Project

(Please state your name and note if you live directly on San Carlos)

- Vote with your “Dots”! (Voting Instructions following Q&A)