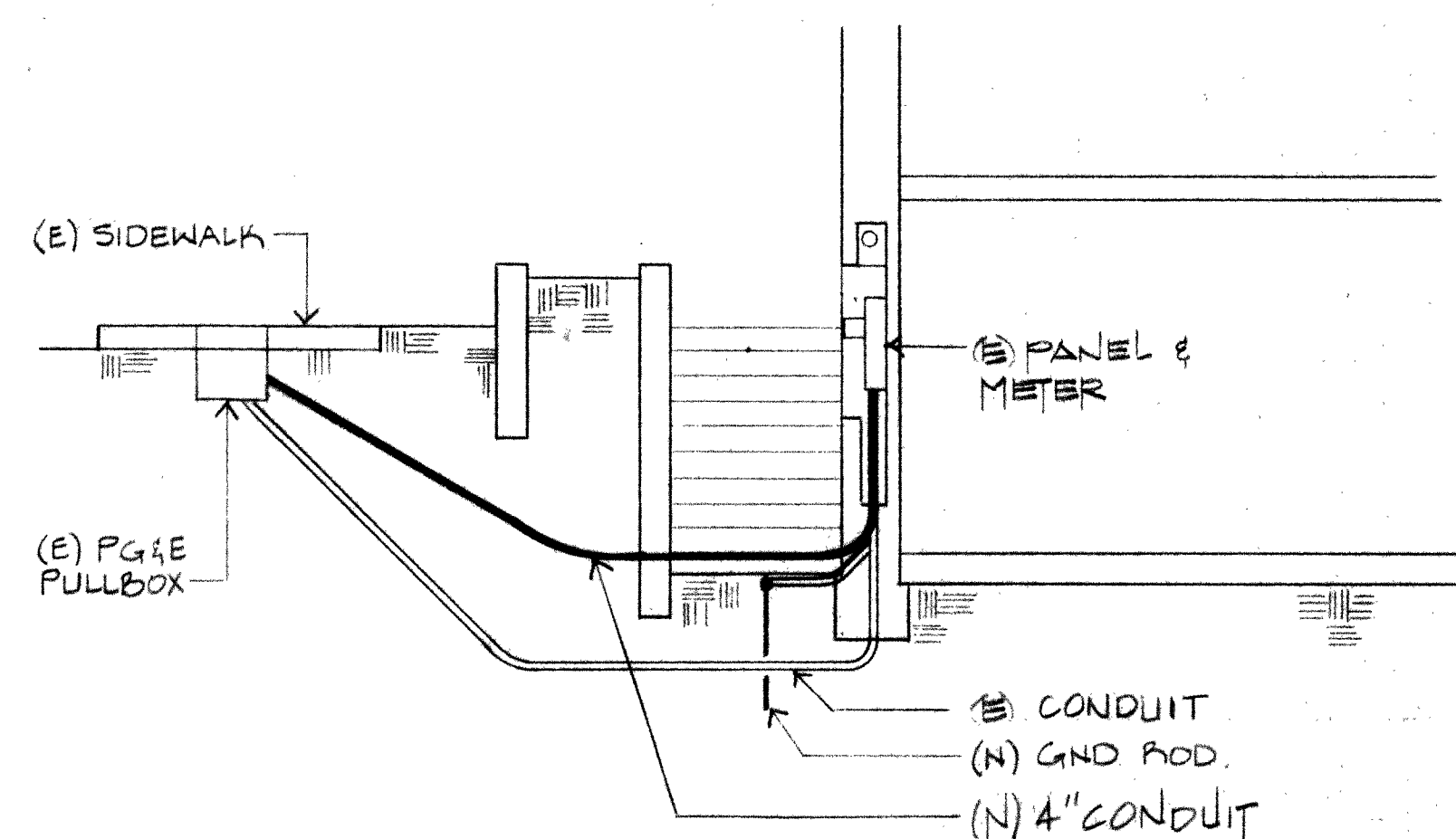
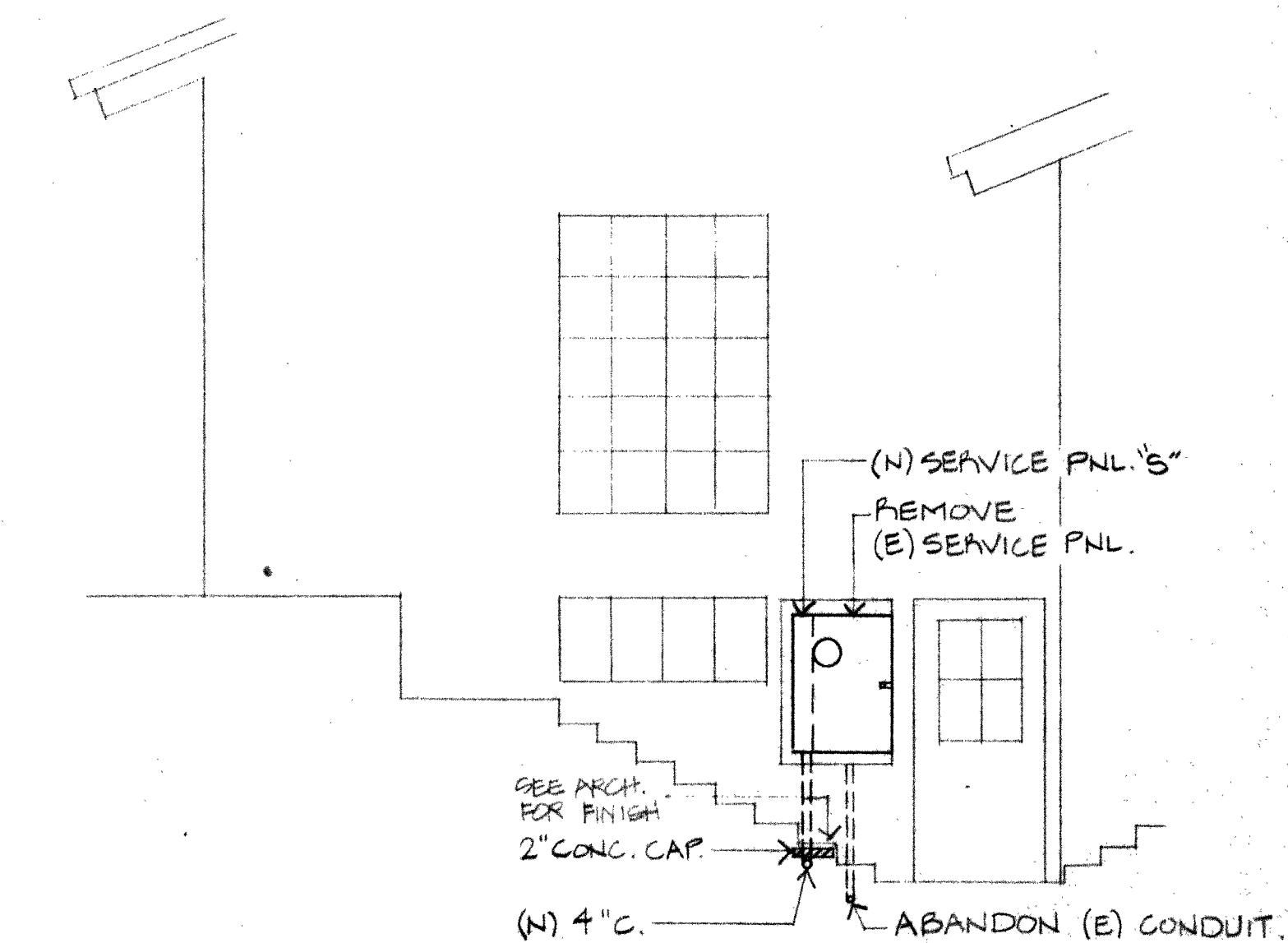


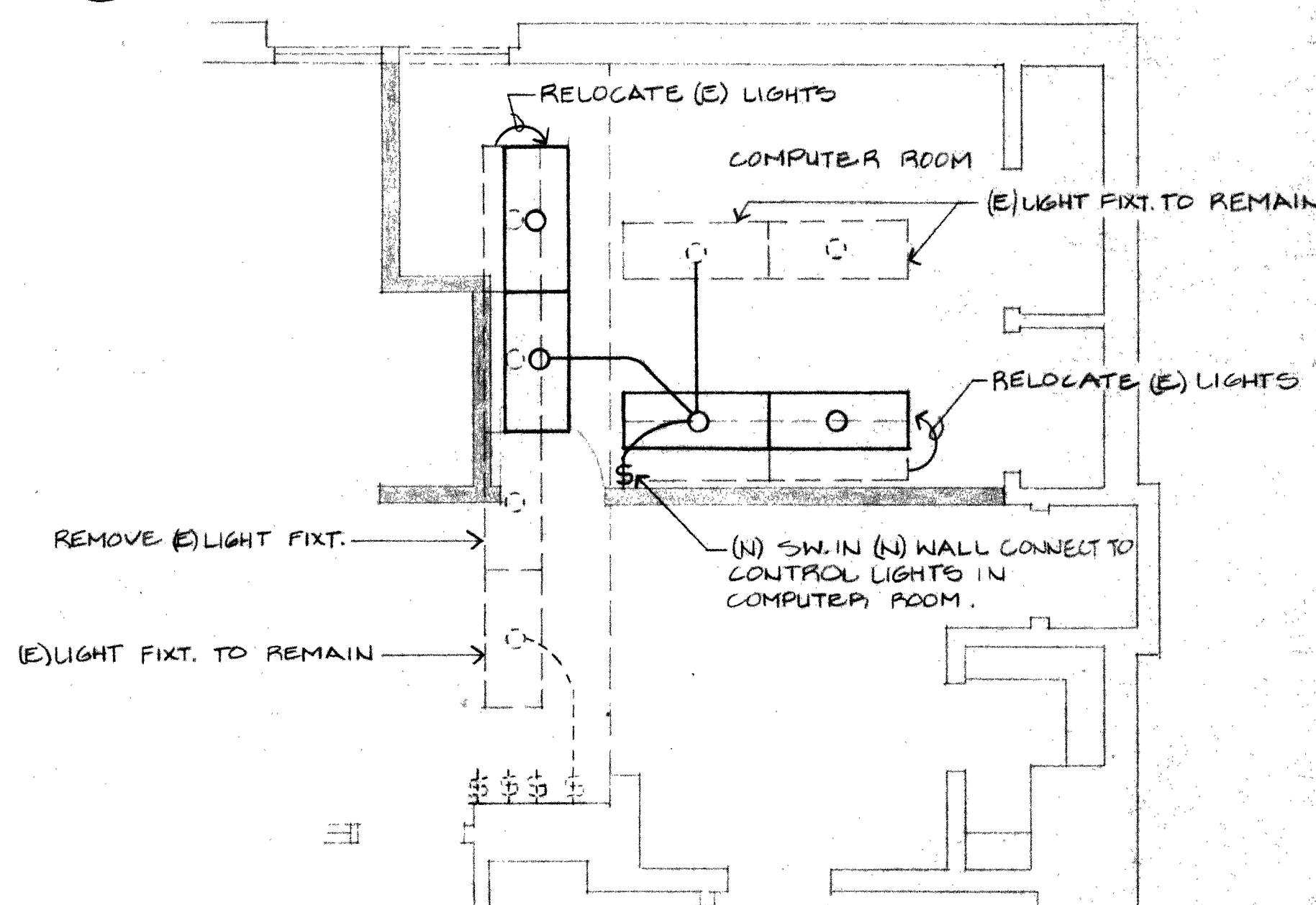
NOTE: PRIOR TO STARTING ANY SITE WORK COORDINATE TRENCHING W/ ARCHITECT.



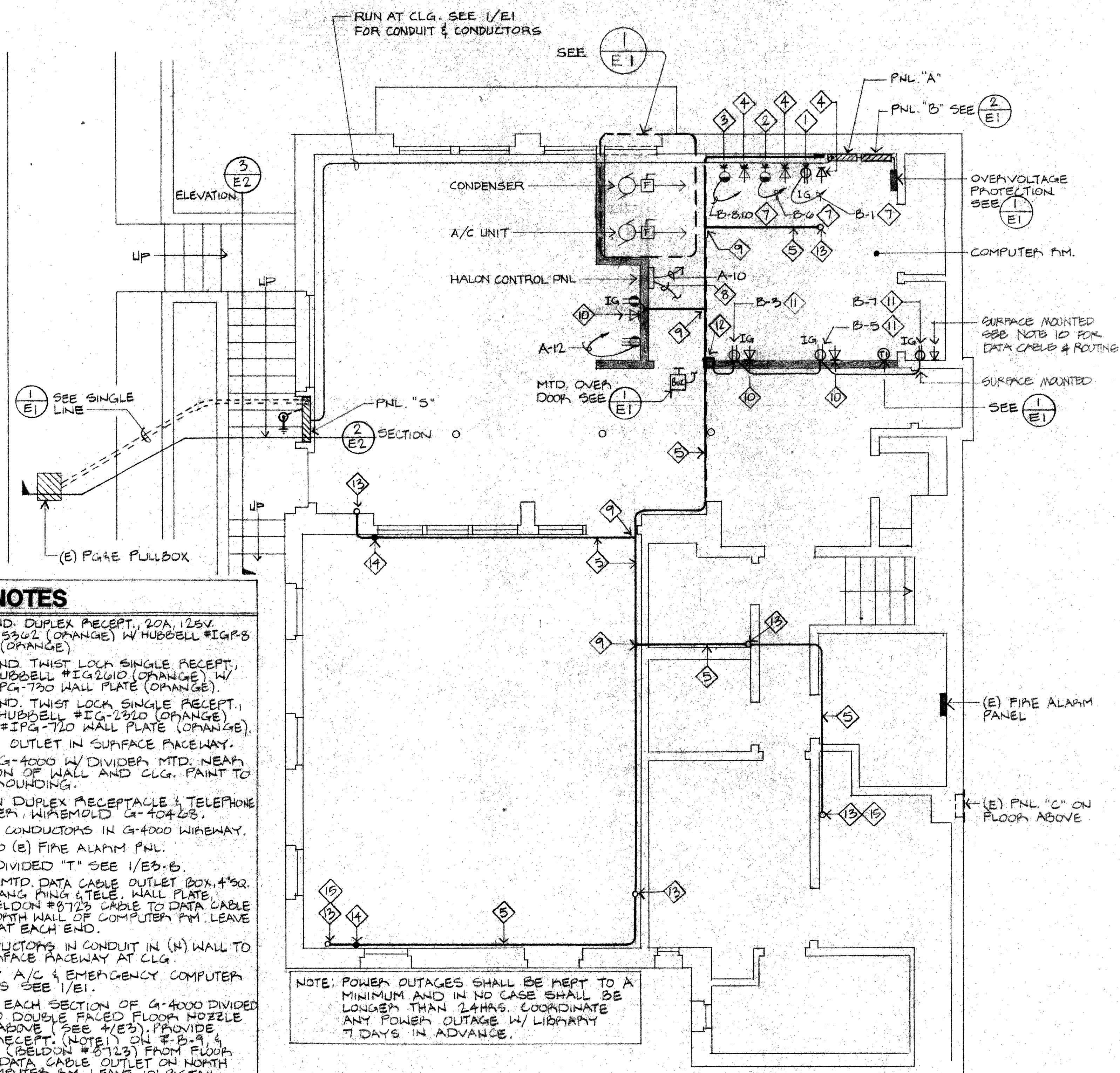
2 (E) SERVICE SECTION
NO SCALE



3 ELEVATION AT SERVICE PANEL
NO SCALE



4 LIGHTING PLAN
NO SCALE



1 POWER & SIGNAL PLAN
1/4"=1'-0"

SHEET NOTES

1. ISOLATED GND. DUPLEX RECEPT., 20A, 125V. HUBBELL #IG330Z (ORANGE) W/ HUBBELL #IGR-5 WALL PLATE (ORANGE).
2. ISOLATED GND. TWIST LOCK SINGLE RECEPT., 20A, 125V, HUBBELL #IG2610 (ORANGE) W/ HUBBELL #IPG-720 WALL PLATE (ORANGE).
3. ISOLATED GND. TWIST LOCK SINGLE RECEPT., 20A, 125OV HUBBELL #IG-2320 (ORANGE) W/ HUBBELL #IPG-720 WALL PLATE (ORANGE).
4. DATA CABLE OUTLET IN SURFACE FACEWAY.
5. WIREMOLD G-4000 W/ DIVIDER MTD. NEAR INTERSECTION OF WALL AND CLG. PAINT TO MATCH SURROUNDING.
6. COMBINATION DUPLEX RECEPTACLE & TELEPHONE OUTLET COVER, WIREMOLD G-4042S.
7. RUN CIRCUIT CONDUCTORS IN G-4000 WIREWAY.
8. 1/2" C., 2#12 TO (E) FIRE ALARM PNL.
9. WIREMOLD DIVIDED "T" SEE 1/E3-B.
10. FLUSH WALL MTD. DATA CABLE OUTLET BOX, 4"x8". W/ SINGLE GANG PING & TELE. WALL PLATE. PROVIDE A BELDON #8723 CABLE TO DATA CABLE OUTLET ON NORTH WALL OF COMPUTER P.M. LEAVE 10' PIGTAIL AT EACH END.
11. RUN # CONDUCTORS IN CONDUIT IN (N) WALL TO G-4000 SURFACE FACEWAY AT CLG.
12. EMERGENCY A/C & EMERGENCY COMPUTER PUSHBUTTONS SEE 1/E1.
13. 1/2" C. FROM EACH SECTION OF G-4000 DIVIDED WIREWAY TO DOUBLE FACED FLOOR NOZZLE ON FLOOR ABOVE (SEE 1/E3). PROVIDE ISOLATED RECEPT. (NOTE 1) ON # B-9 & DATA CABLE (BELDON #8723) FROM FLOOR NOZZLE TO DATA CABLE OUTLET ON NORTH WALL OF COMPUTER P.M. LEAVE 10' PIGTAIL AT EACH END.
14. G-4000 DIVIDED WIREWAY DN. WALL TO DESK LEVEL. PROVIDE COMBINATION FITTING (NOTE 6) & ISOLATED RECEPT. (NOTE 1) ON # B-11 & DATA CABLE (BELDON #8723) FROM OUTLET TO DATA CABLE OUTLET ON NORTH WALL OF COMPUTER P.M. LEAVE 10' PIGTAIL AT EACH END.
15. PROVIDE ADDITIONAL DATA CABLE BELDON #8723 BETWEEN LOCATIONS AS SHOWN BY THIS NOTE.

Hall Goodhue Haisley & Barker
San Francisco Monterey
Architecture, Planning, Urban Design
2959 Monterey-Salinas Highway
Monterey, California 93940
Telephone 408 375-9594

Harrison Memorial Library Computer Room

Ocean at Lincoln
Carmel, California

Consulting Electrical Engineers:
Fehr Engineering Company
157 Sargent Ct., Monterey, CA 93940
(408) 373-3135

Consulting Mechanical Engineers:
List Engineering Company
157 Sargent Ct., Monterey, CA 93940
(408) 373-3135

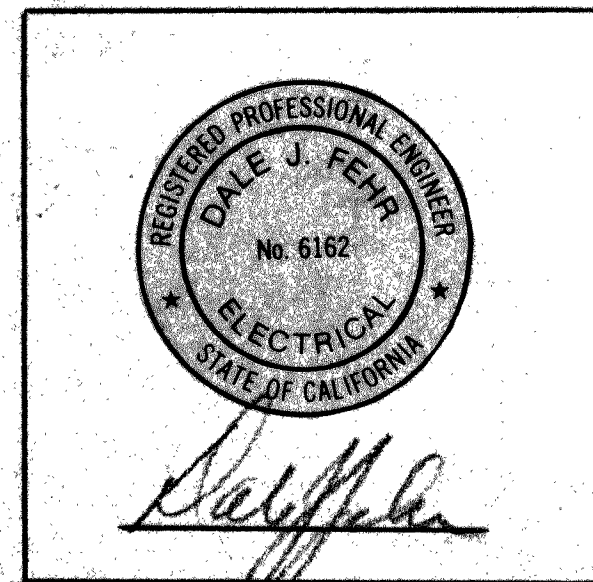
REVISIONS

Drawing Title: ELECTRICAL
POWER & SIGNAL PLAN

Scale: 1/4"=1'-0" Sheet No.:

E-2

Date: May 7, 1985



Hall Goodhue Haisley & Barker
 San Francisco Monterey
 Architecture, Planning, Urban Design
 2959 Monterey-Salinas Highway
 Monterey, California 93940
 Telephone 408 375-9594

Harrison Memorial Library Computer Room

Ocean at Lincoln
 Carmel, California

Consulting Electrical Engineers:
 Fehr Engineering Company
 157 Sargent Ct., Monterey, CA 93940
 (408) 373-3135

Consulting Mechanical Engineers:
 List Engineering Company
 157 Sargent Ct., Monterey, CA 93940
 (408) 373-3135

REVISIONS

Drawing Title: ELECTRICAL AT
 SUNSET CENTER & DETAILS

Scale: AS NOTED Sheet No.:

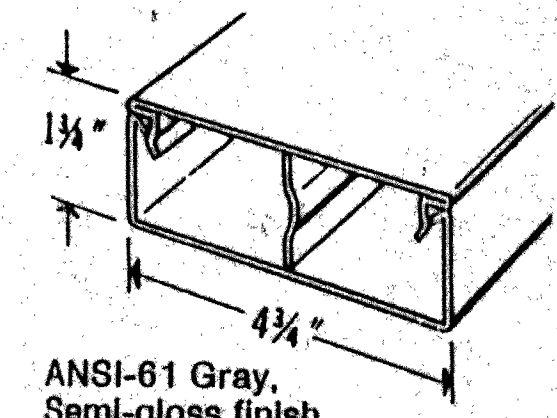
E-3

Date: May 7, 1985

- ◇ SHEET NOTES**
- ISOLATED GROUND DUPLEX RECEPTACLE, 20A, 125V, HUBBELL #IG5301 (ORANGE) W/HUBBELL #IGP-8 WALL PLATE (ORANGE).
 - DUPLEX OUTLET, 20A, 125V, SEE ELEC. SPECIFICATIONS.
 - WIEMOLD G-4000 W/DIVIDER.
 - PROVIDE A SEPERATE, INSULATED, ISOLATED GROUND WIRE SIZED THE SAME AWG AS THE PHASE CONDUCTOR, FROM THE ISOLATED GROUND CONNECTION ON THE RECEPTACLE TO THE ISOLATED GROUND LUG IN THE ELEC. PANELBOARD.
 - (N) 4"x4" POST W/SURF. MTD. POWER COMMUNICATION WIREWAY, VERIFY EXACT LOCATION W/ LIBRARIAN BEFORE INSTALLATION.

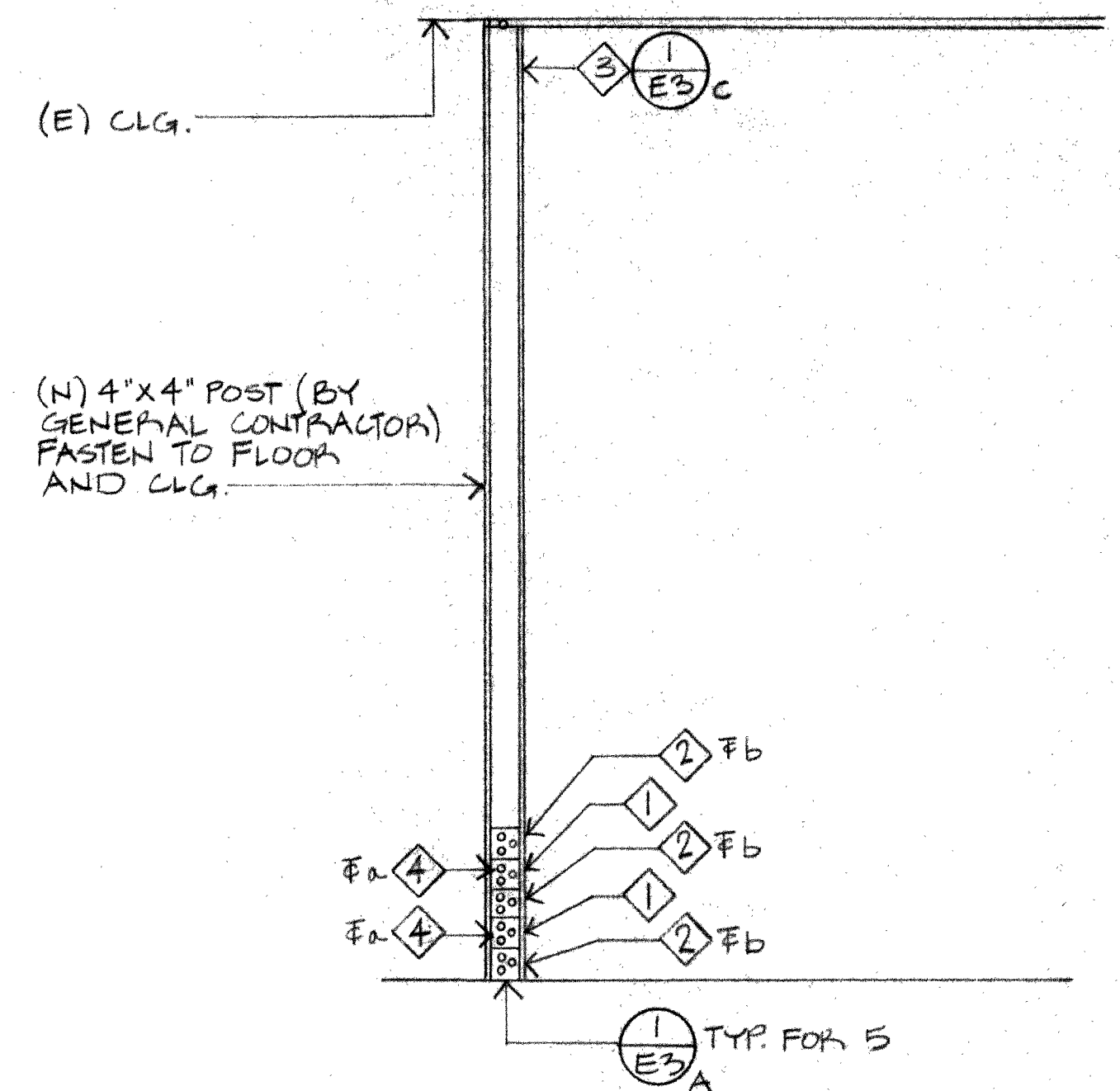


A WIEMOLD #G-4046B COMBINATION DUPLEX RECEPTACLE AND TELEPHONE OUTLET COVER
B WIEMOLD #G-4015D DIVIDED TEE

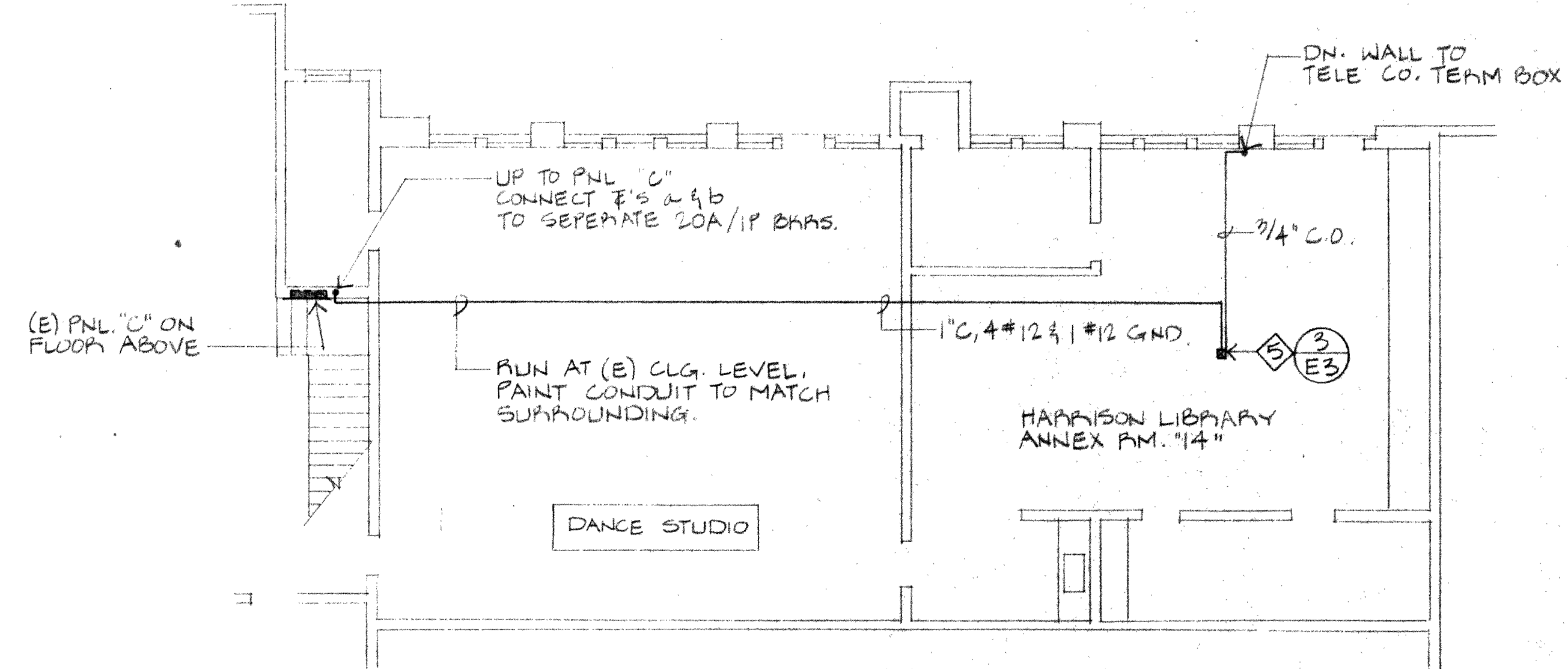


ANSI-61 Gray, Semi-gloss finish.
C WIEMOLD G-4000 DIVIDED RACEWAY

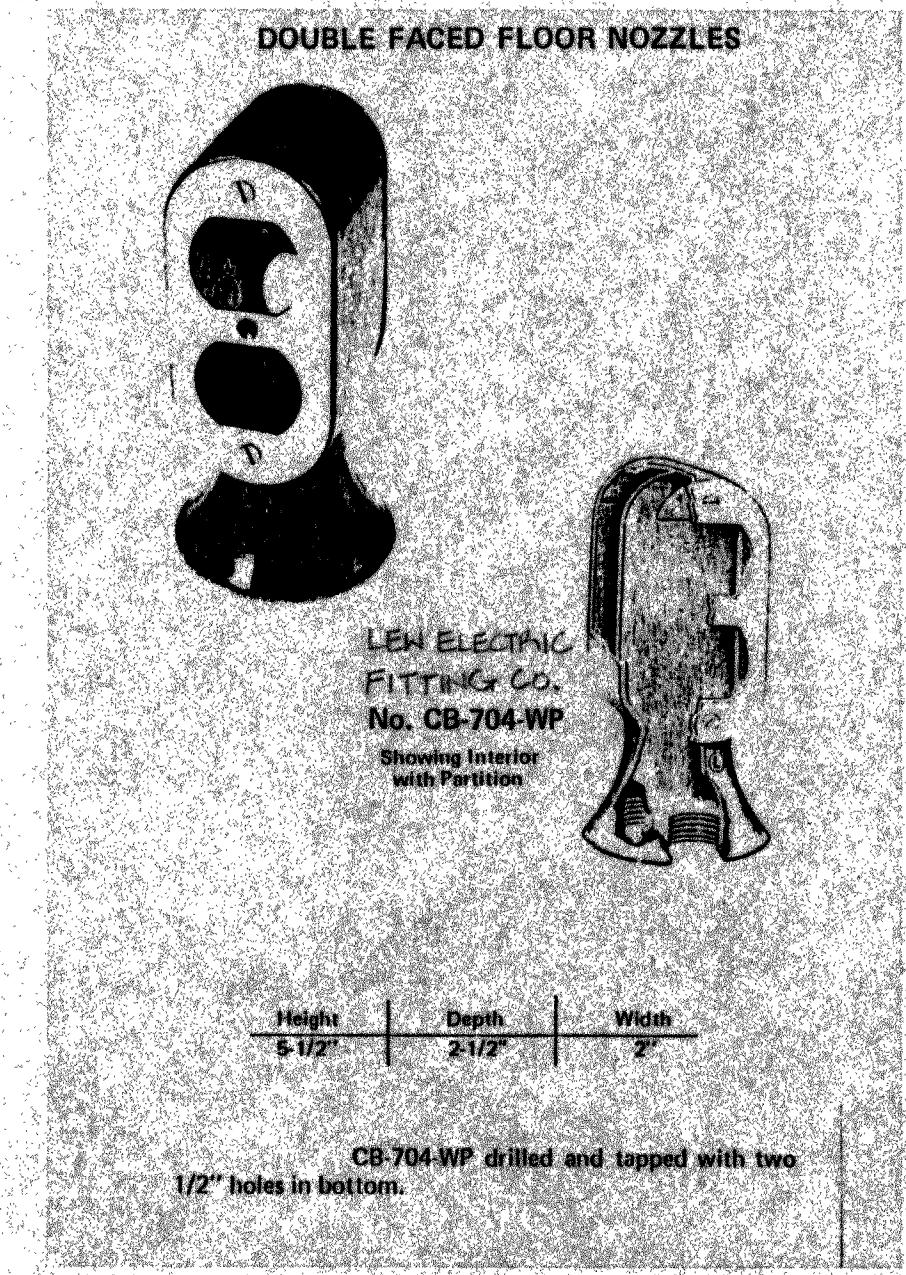
1 SURFACE RACEWAY DETAIL
 NO SCALE



3 POWER AND DATA CABLE POST
 1/2"=1'-0"



2 SUNSET CENTER SOUTH BASEMENT ELEC. FLOOR PLAN
 1/8"=1'-0"



4 DOUBLE FACED FLOOR NOZZLES
 NO SCALE

