

PROJECT/OWNER

HARRISON MEMORIAL LIBRARY

N/E CORNER
OCEAN & LINCOLN AVE
CARMEL
CALIFORNIA
831.624.1366

NELSON ZIMMERMAN DESIGN

INTERIOR DESIGN &
SPACE PLANNING

102 LAUREL DRIVE
CARMEL VALLEY CA 93924

831.659.1663
f. 831.659.2369

chrismz@ebcglobal.net

Drawn by: CZ

Drawing Date: 12.14.05

Revisions:
2.14.06

The use of these plans and specifications is restricted to the original site for which they were prepared, and publication thereof is expressly limited to such use. Re-use, reproduction or publication by any method in whole or in part is prohibited without designer's express approval.

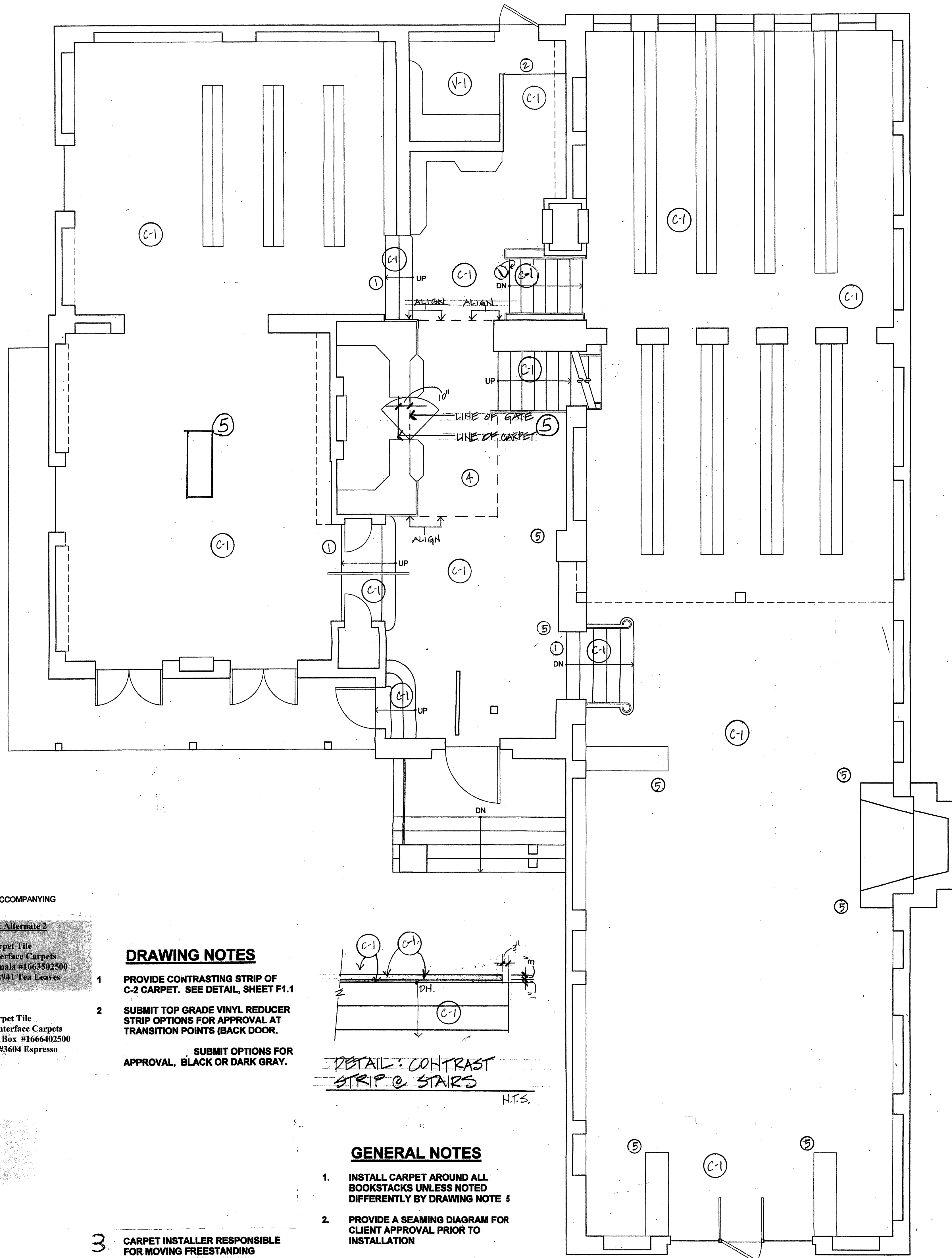
SHEET TITLE:
FLOORCOVERING PLAN:

MAIN LEVELS

SHEET NUMBER:

F1.1

1/4" = 1'-0"



KEY

(FOR FULL SPECIFICATIONS, SEE ACCOMPANYING FLOOR COVERING BID PACKAGE)

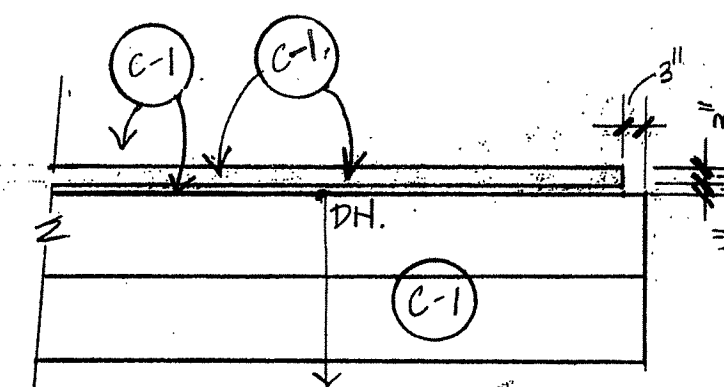
	Carpet Alternate 1	Carpet Alternate 2
C-1 General Carpet	Broadloom Carpet MFR: Bentley Carpets STYLE: Restoration # 8RS2406301 COLOR: Chelmsford #855839	Carpet Tile MFR: Interface Carpets STYLE: Kamala #1663502500 COLOR: 2941 Tea Leaves

C-2 Contrasting Carpet Strip at Stairs Drawing Note # 1 F1.1	Broadloom Carpet MFR: Bentley Carpets STYLE: Torch Song #4TG3606201 COLOR: Liza #403094	Carpet Tile MFR: Interface Carpets STYLE: Paint Box #1666402500 COLOR: #3604 Espresso
---	--	--

V-1 Vinyl Tile
MFR: Amtico
STYLE: MT232
COLOR: Lunar Lead
SIZE: 12x12"

DRAWING NOTES

1. PROVIDE CONTRASTING STRIP OF C-2 CARPET. SEE DETAIL, SHEET F1.1
2. SUBMIT TOP GRADE VINYL REDUCER STRIP OPTIONS FOR APPROVAL AT TRANSITION POINTS (BACK DOOR).
SUBMIT OPTIONS FOR APPROVAL, BLACK OR DARK GRAY.



GENERAL NOTES

1. INSTALL CARPET AROUND ALL BOOKSTACKS UNLESS NOTED DIFFERENTLY BY DRAWING NOTE 5
2. PROVIDE A SEAMING DIAGRAM FOR CLIENT APPROVAL PRIOR TO INSTALLATION
3. USE ONLY MANUFACTURER-RECOMMENDED ADHESIVES AND INSTALLATION METHODS

3 CARPET INSTALLER RESPONSIBLE FOR MOVING FREESTANDING BOOKCASES, MODULAR AND FREESTANDING FURNITURE AND ALL PRE-EMPTED FILE CABINETS.

PROJECT/OWNER

HARRISON MEMORIAL LIBRARY

N/E CORNER
OCEAN & LINCOLN AVE
CARMEL
CALIFORNIA
831.624.1366

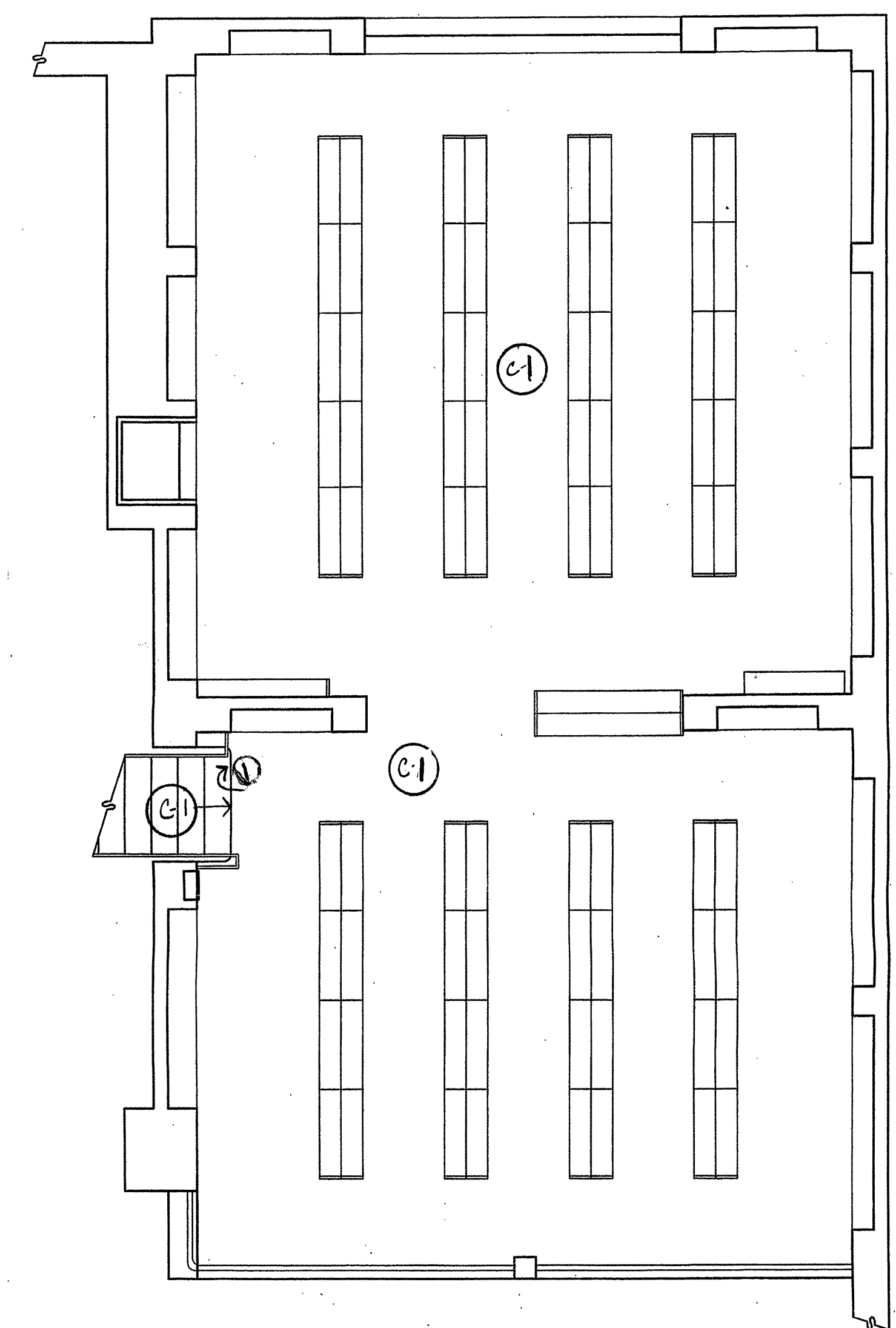
NELSON ZIMMERMAN DESIGN

INTERIOR DESIGN &
SPACE PLANNING

102 LAUREL DRIVE
CARMEL VALLEY CA 93924

831.659.1663
f. 831.659.2369

chriznz@sbglobal.net



KEY

(FOR FULL SPECIFICATIONS, SEE ACCOMPANYING FLOOR COVERING BID PACKAGE)

	Carpet Alternate 1	Carpet Alternate 2
C-1 General Carpet	Broadloom Carpet MFR: Bentley Carpets STYLE: Restoration # 8RS2406301 COLOR: Chelmsford #885839	Carpet Tile MFR: Interface Carpets STYLE: Kamala #1663502500 COLOR: 2941 Tea Leaves

	Broadloom Carpet	Carpet Tile
C-2 Contrasting Carpet Strip at Stairs Drawing Note # 1 F1.1	MFR: Bentley Carpets STYLE: Torch Song #4TG3606201 COLOR: Liza #403094	MFR: Interface Carpets STYLE: Paint Box #1666402500 COLOR: #3604 Espresso

V-1 Vinyl Tile	MFR: Amtico STYLE: MT232 COLOR: Lunar Lead SIZE: 12x12"
-------------------	--

DRAWING NOTES

1. PROVIDE CONTRASTING STRIP OF C-2 CARPET. SEE DETAIL, SHEET F1.1
2. SUBMIT TOP GRADE VINYL REDUCER STRIP OPTIONS FOR APPROVAL AT TRANSITION POINTS (BACK DOOR, SUBMIT OPTIONS FOR APPROVAL, BLACK OR DARK GRAY.

3. CARPET INSTALLER RESPONSIBLE FOR MOVING FREESTANDING BOOKCASES, MODULAR AND FREESTANDING FURNITURE AND ALL PRE-EMPTED FILE CABINETS.

GENERAL NOTES

1. INSTALL CARPET AROUND ALL BOOKSTACKS UNLESS NOTED DIFFERENTLY BY DRAWING NOTE 5
2. PROVIDE A SEAMING DIAGRAM FOR CLIENT APPROVAL PRIOR TO INSTALLATION
3. USE ONLY MANUFACTURER-RECOMMENDED ADHESIVES AND INSTALLATION METHODS

Drawn by: CZ

Drawing Date: 12.14.05

Revisions:
2.14.06

The use of these plans and specifications is restricted to the original site for which they were prepared, and publication thereof is expressly limited to such use. Re-use, reproduction or publication by any method in whole or in part is prohibited without designer's express approval.

SHEET TITLE:
FLOORCOVERING PLAN:

BASEMENT & MEZZANINE

SHEET NUMBER:

F1.2

1/4" = 1'-0"