

TRANS. # _____

KEEBLE and RHODA • ARCHITECTS

135 WEBSTER STREET • MONTEREY, CALIFORNIA 93940 • TELEPHONE (408) 375-9854

LETTER OF TRANSMITTAL

TO: Mrs. Childers
HARRISON MEMORIAL
LIBRARY

DATE: 23 JUNE 76
JOB: SPRINKLER SYSTEM
for HARRISON LIBRARY
JOB # _____

ATTN: _____

GENTLEMEN: WE ARE ENCLOSING THE FOLLOWING ITEMS WHICH ARE:

- _____ APPROVED AS NOTED
- _____ NOT APPROVED, RESUBMIT
- _____ TO BE CHECKED & RETURNED

- _____ FOR YOUR RECORD/USE
- _____ FOR REVIEW & COMMENT
- _____ BID SET(S)

1	SET PLANS
---	-----------

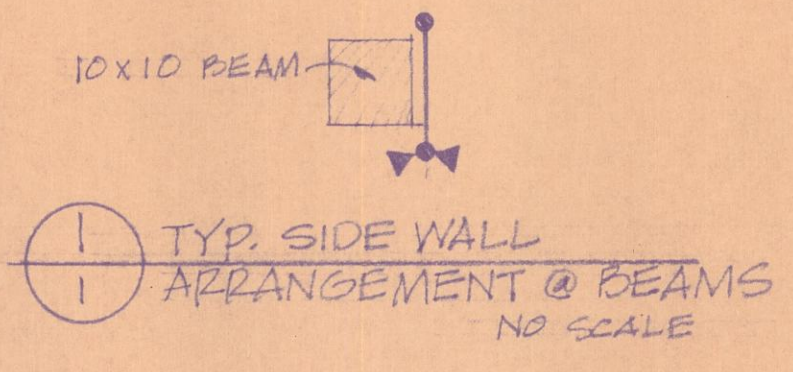
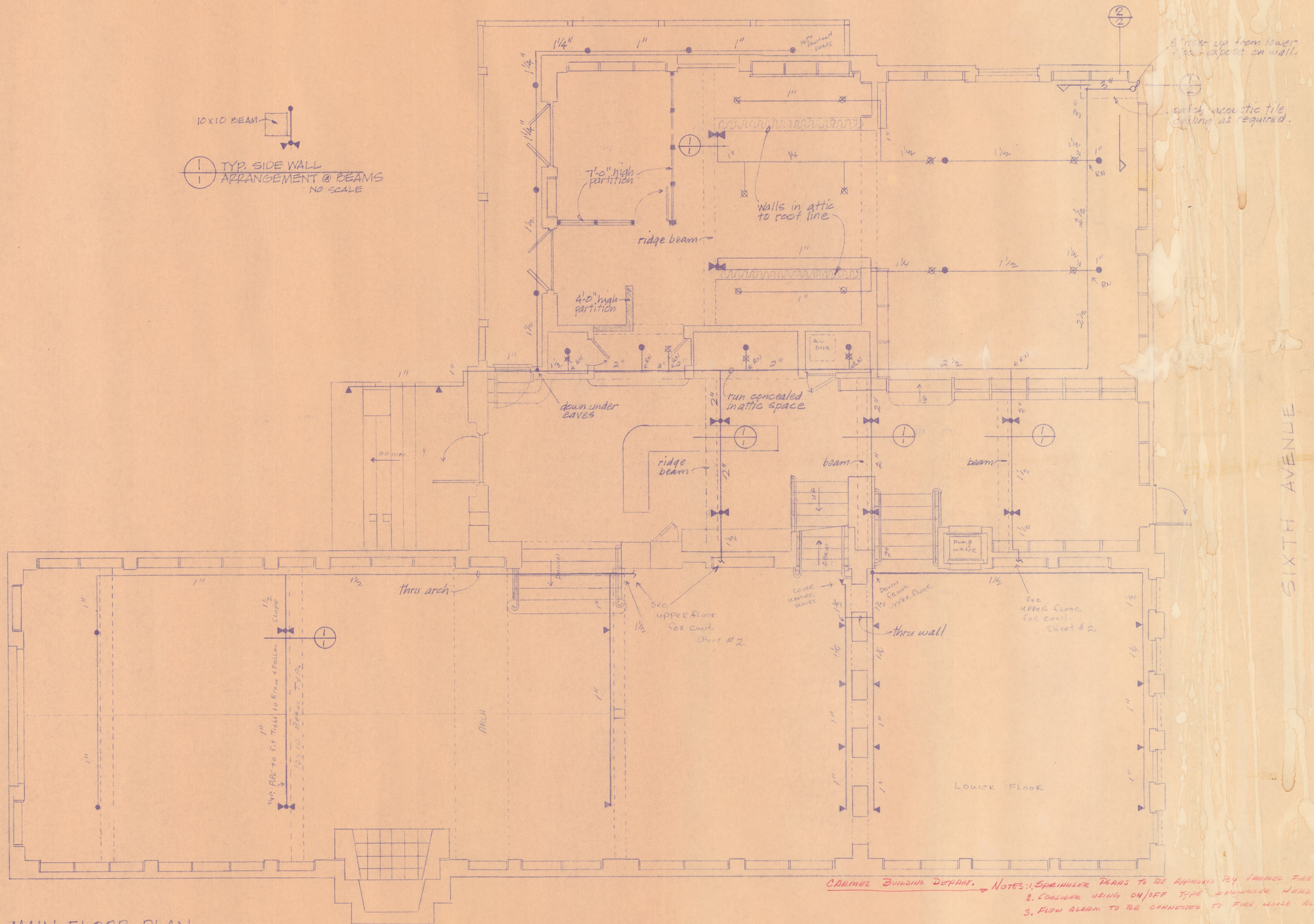
COPY(S) TO: _____

Pon Peta
Signature

LINCOLN STREET

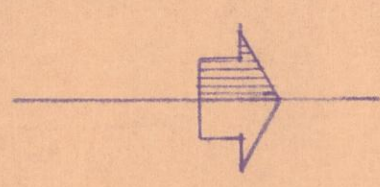
OCEAN AVENUE

SIXTH AVENUE



MAIN FLOOR PLAN

1/4" = 1'-0"

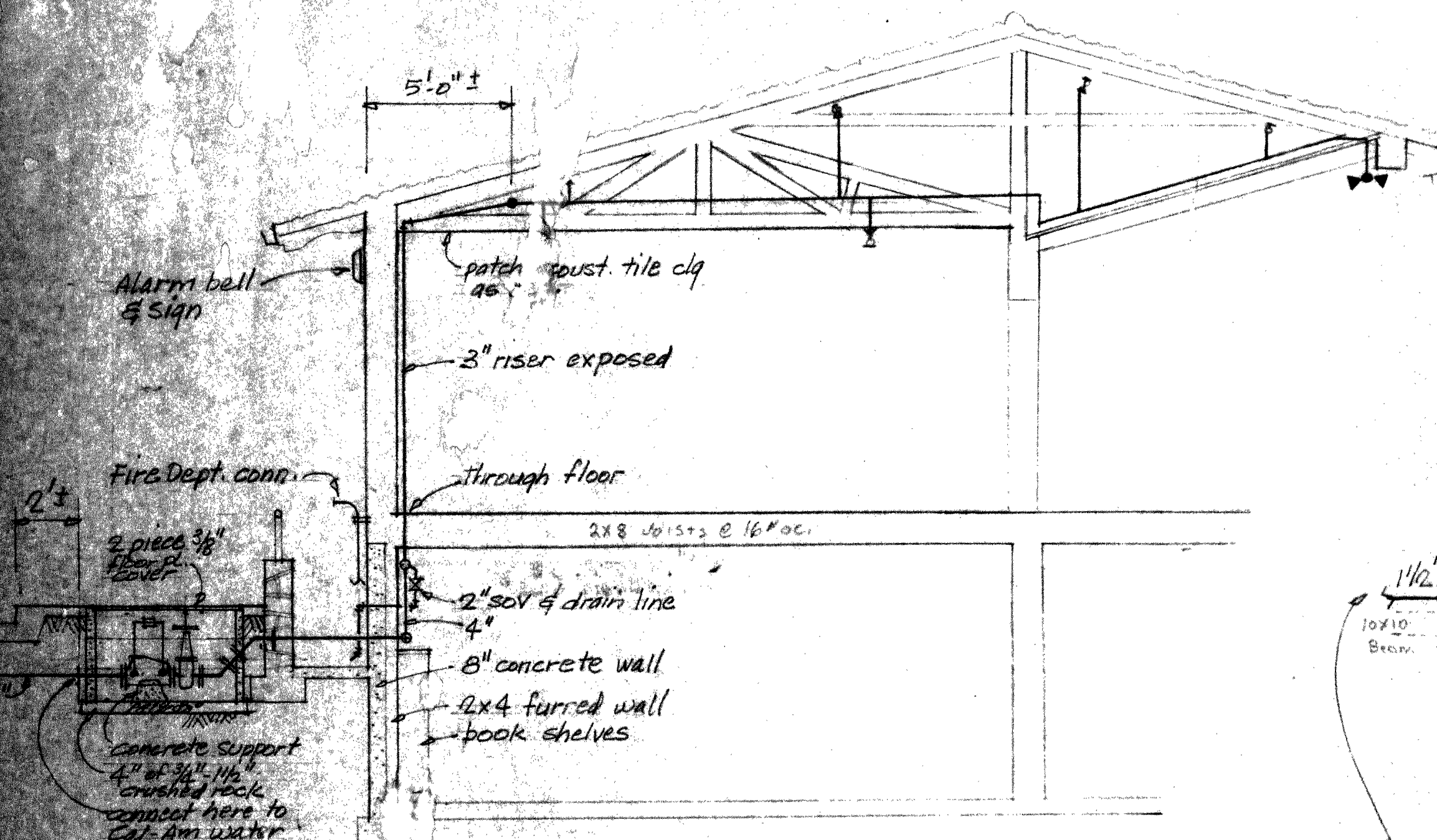


- SYMBOLS:**
- ◄ 165° Sidewall on 1/2 ORNING
 - 165° Pendant on DROP
 - ⊗ 165° Upright on 1 1/2 RR

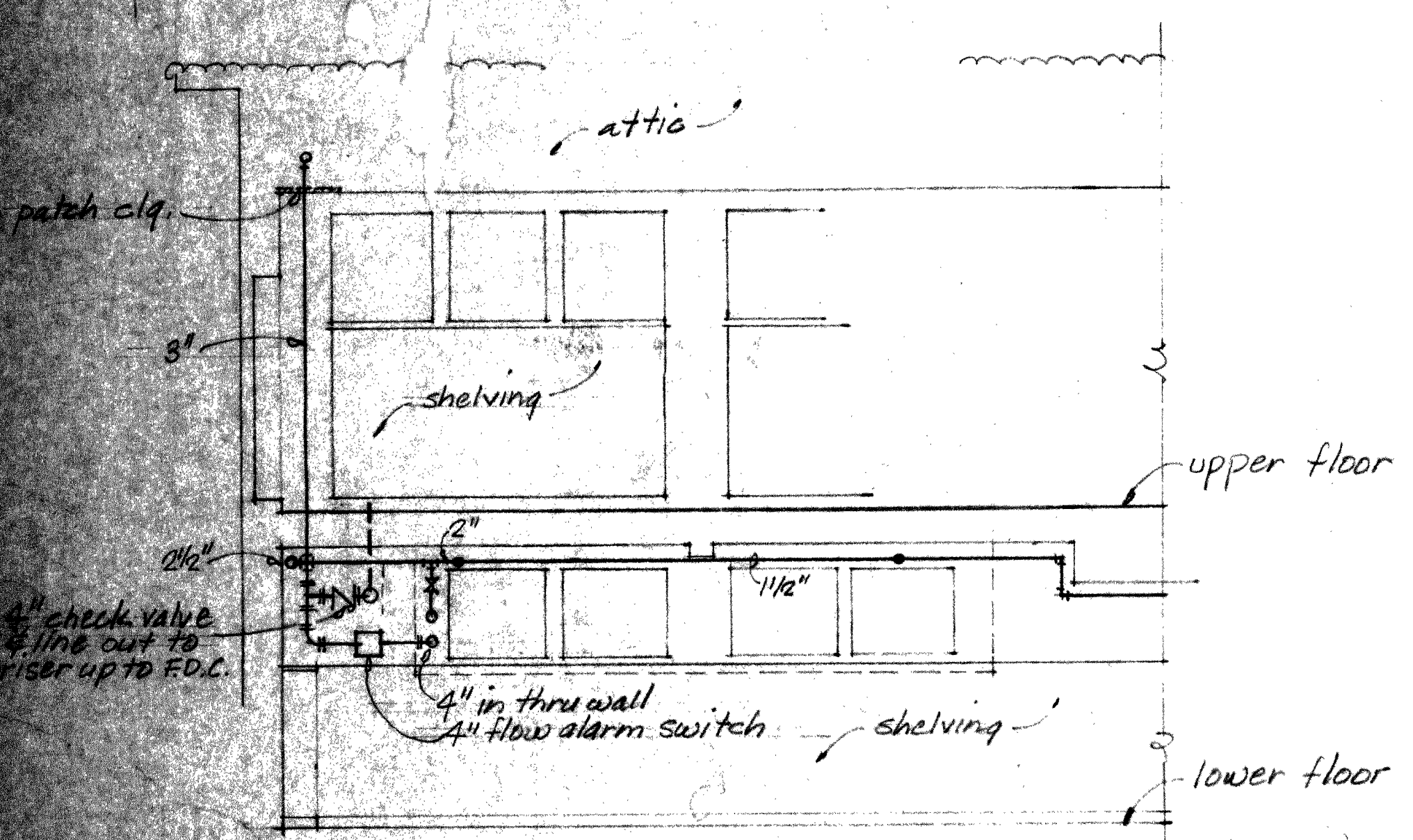
- NOTES:**
1. Verify all dimensions on the job.
 2. See "Accuracy of Data" in specifications, Sect.
 3. All holes must be patched and escutcheon plates installed.

CARMEL BUILDING DEPART. NOTES: 1. SPRINKLER PLANS TO BE APPROVED BY CARMEL FIRE DEPT.
 2. CONSIDER USING ON/OFF TYPE SPRINKLER HEADS
 3. FLOW ALARM TO BE CONNECTED TO FIRE NOISE ALARM BOARD

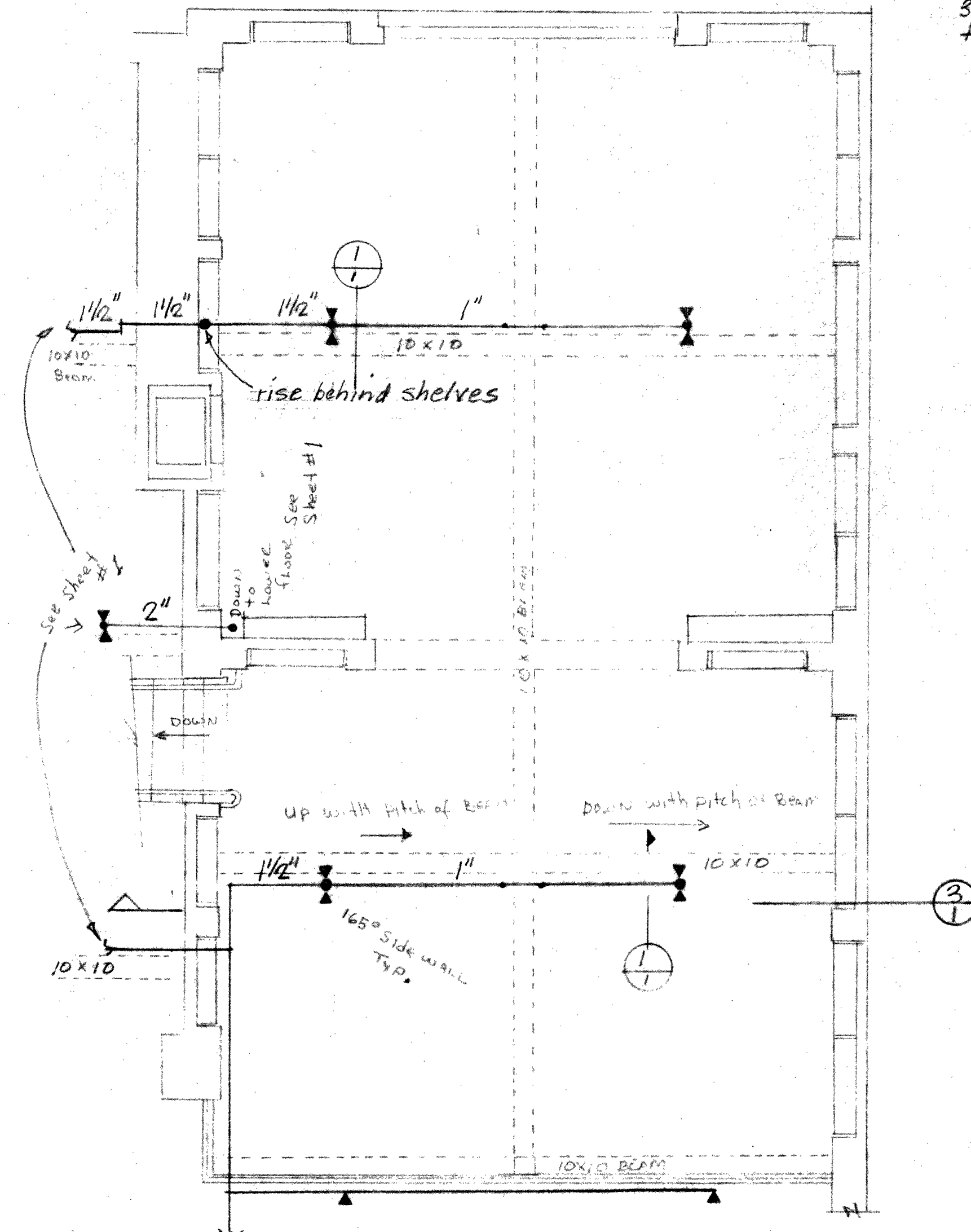
AUTOMATIC SPRINKLER SYSTEM FOR HARRISON MEMORIAL LIBRARY OCEAN & LINCOLN, CARMEL, CALIFORNIA		SHEET NO. OF 2	
JOB NO.	APPROVAL BY	UPRIGHT:	165° 14
DRAWN BY:		PENDENT:	165° 14
DATE: 4 JUN 76		SPECIAL:	5 Wet, 165° 3
SCALE: 1/4" = 1'-0"		TOTAL THIS SHEET	8
FILE:	CONTRACT:		



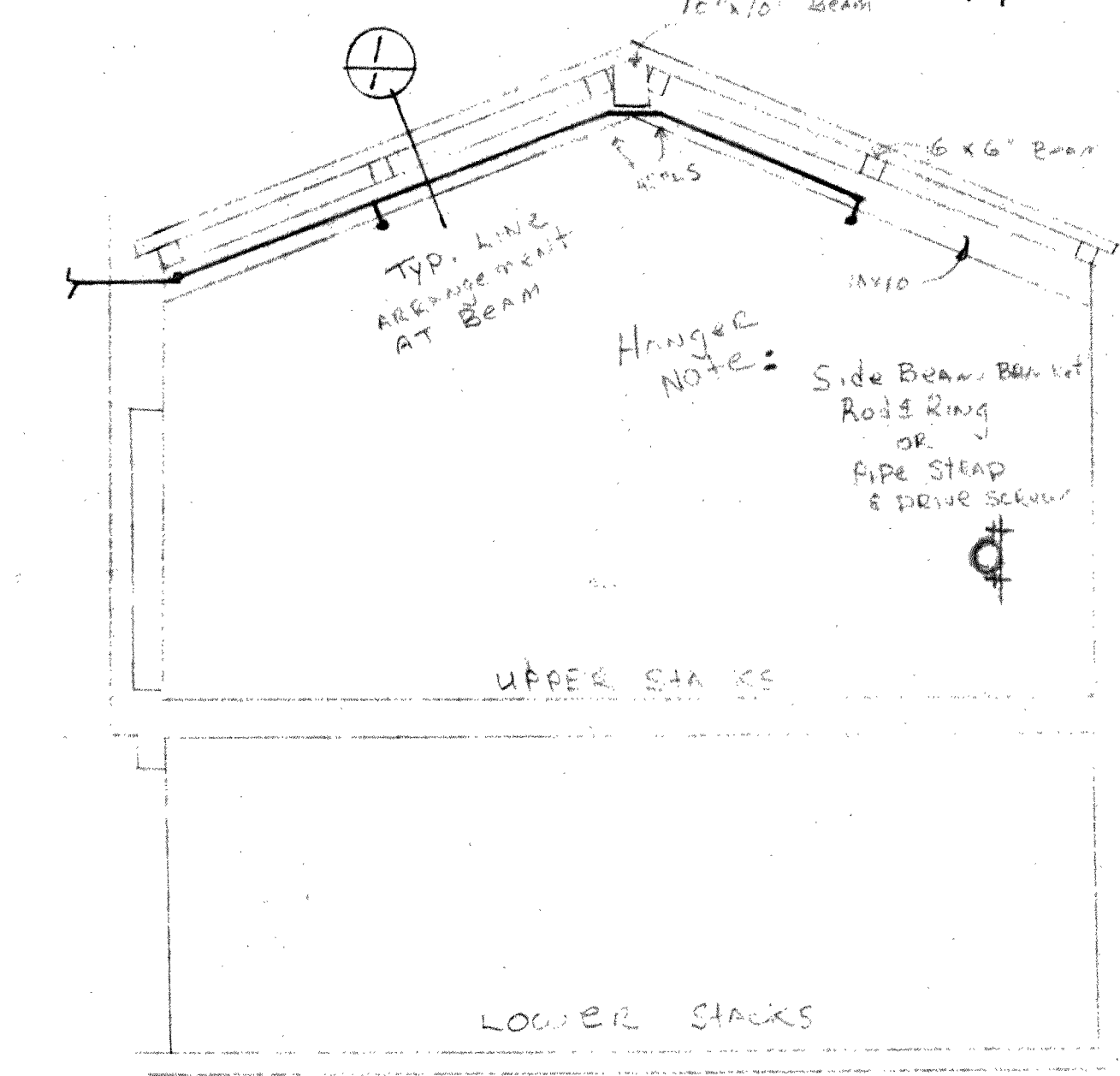
SECTION 1
1/4" = 1'-0"



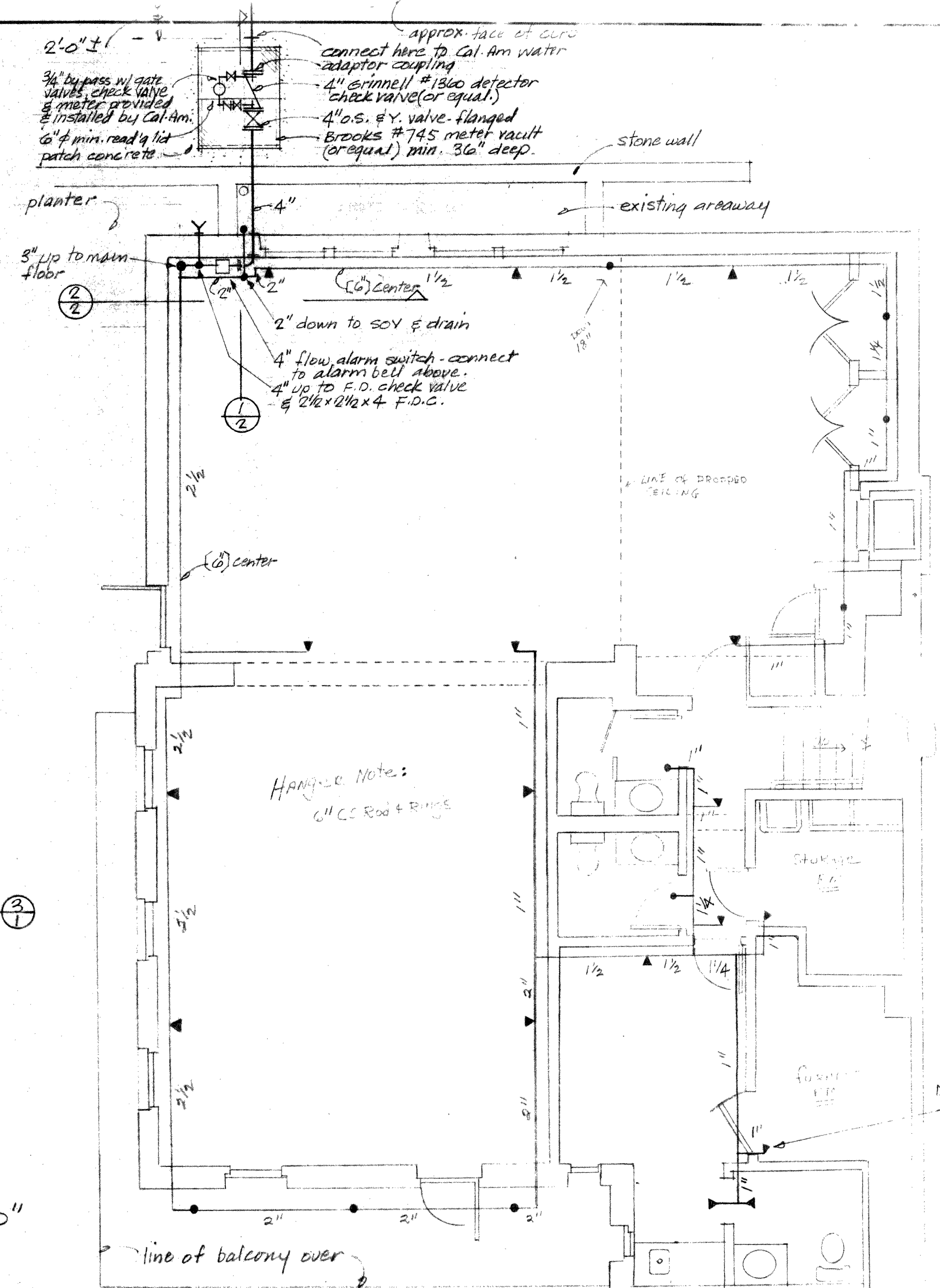
PARTIAL ELEVATION 2
1/4" = 1'-0"



UPPER FLOOR PLAN
1/4" = 1'-0"



SECTION THRU STACKS 3
1/4" = 1'-0"



LOWER FLOOR PLAN
1/4" = 1'-0"

AUTOMATIC SPRINKLER SYSTEM FOR HARRISON MEMORIAL LIBRARY OCEAN & LINCOLN, CARMEL, CALIFORNIA		
JOB NO.	APPROVAL BY	SHEET NO. 2 OF 2
DRAWN BY:		SPRINKLERS
DATE: 4 JUN 70		UPRIGHT:
SCALE: 1/4" = 1'-0"		PENDENT: 165°
FILE:		SPECIAL: Side Wall 165°
	CONTRACT:	TOTAL THIS SHEET 35