



NOTICE OF APPROVAL

The Department of Community Planning & Building of the City of Carmel-by-the-Sea has approved a Project pursuant to the City's Municipal Code. Persons interested in the project may review additional materials available at the Department of Community Planning & Building located at City Hall on Monte Verde Street between Ocean and 7th Avenues, phone number 831-620-2010.

The decision to approve this project may be appealed within 10 days from the date of this by filing a written appeal with the Department of Community Planning & Building.

Planning Case #: Design Review 24224

Owner Name: HILL BILL TR

Case Planner: Jacob Olander, Assistant Planner

Date Posted: _____

Date Approved: 08/22/2024

Project Location: NW Corner of 8th & San Carlos

APN #: 010145007000 **BLOCK/LOT:** 91/ALL LOTS 17 AND 19

Applicant: Sage Scherman

Project Description: This approval of Design Study (DR 24224 (Hill)) authorizes the replacement of 7 windows to an existing single-family residence located at NW Corner of 8th & San Carlos in the Single Family Residential (R-1) District. The modifications approved under this Design Study include: 1. Replacing 7 windows with dark bronze painted aluminum clad wood framed windows. The new windows will match the size, operation and divided lights of the existing windows. Alterations not expressly listed in this authorization are not permitted. The project shall be consistent with the plans dated approved by Community Planning & Building Department on August 22, 2024, unless modified by the conditions of approval contained herein.

Can this project be appealed to the Coastal Commission? Yes No

Upon completion of the 10 calendar-day appeal period, please return this form, along with the Affidavit of Posting, to the case planner noted above.



FINDINGS AND CONDITIONS

Project: DR 24224 (Hill)

Location: NW Corner of 8th & San Carlos; 010-145-007-000

Date of Action: August 22, 2024

Project Description:

DR 24224 (Hill) authorizes Design Study Applications (DR 24224, Hill) located at NW Corner of 8th & San Carlos in the Single-Family (R-1) District. APN: 010-145-007-000

The proposed changes include:

- The replacement of 7 windows with dark bronze painted aluminum clad wood framed windows. The new windows will match the size, operation and divided lights of the existing windows.

FINDINGS REQUIRED FOR DESIGN STUDY APPROVAL		
<p>The Director shall have the authority to approve, approve with modifications and/or conditions, or deny an application for design review based on written findings stating the reasons for the action. Findings shall be based on information in the record. CMC 17.58.060.A.</p> <p>For each of the required findings listed below, the staff has indicated whether the application, either as proposed or with conditions, supports adopting the findings. For all findings checked "no," staff discusses the issues to facilitate staff's decision-making. Findings checked "yes" may or may not be discussed depending on the issue(s).</p>		
CMC 17.58.060.B Findings for Design Review Approval	YES	NO
Before approving an application for design review in any district, the Director shall find that the final design plans:		
1. Conform to the applicable policies of the General Plan and the Local Coastal Program;	✓	
2. Comply with all applicable provisions of this code; and	✓	
3. Are consistent with applicable adopted design review guidelines.	✓	
<p>Additional Staff Analysis/Discussion: None required. The project meets the findings as proposed with the associated conditions.</p>		

ENVIRONMENTAL REVIEW
<p>The California Environmental Quality Act (California Public Resources Code §§ 21000, <i>et seq.</i>, "CEQA"), together with State Guidelines (14 California Code Regulations §§ 15000, <i>et seq.</i>, the "CEQA Guidelines") and City Environmental Regulations (CMC 17.60) require that certain projects be reviewed for environmental impacts and that environmental documents be prepared.</p>
<p>Finding: The Community Planning and Building Department finds that pursuant to CEQA regulations, the project is categorically exempt under Section 15301 (Class 1) – Existing Facilities, and no exceptions to the exemption exist pursuant to section 15300.2 of the CEQA Guidelines.</p>
<p>Additional Staff Analysis/Discussion: The project consists of the replacement of 7 windows with dark bronze painted aluminum clad wood framed windows. The new windows will match the size, operation and divided lights of the existing windows.</p>

CONDITIONS OF APPROVAL	
No.	
1.	<p>Authorization. This approval of Design Study (DR 24224 (Hill)) authorizes the replacement of 7 windows to an existing single-family residence located at NW Corner of 8th & San Carlos in the Single Family Residential (R-1) District. The modifications approved under this Design Study include:</p> <p style="padding-left: 40px;">1. Replacing 7 windows with dark bronze painted aluminum clad wood framed windows. The new windows will match the size, operation and divided lights of the existing windows</p> <p>Alterations not expressly listed in this authorization are not permitted. The project shall be consistent with the plans dated approved by Community Planning & Building Department on August 22, 2024, unless modified by the conditions of approval contained herein.</p>
2.	<p>Codes and Ordinances. The project shall be constructed in conformance with all requirements of the R-1 zoning district. All adopted building and fire codes shall be adhered to in preparing the working drawings. If any codes or ordinances require design elements to be changed, or if any other changes are requested at the time such plans are submitted, such changes may require additional environmental review and subsequent approval by the Planning Department.</p>
3.	<p>Permit Validity. This approval shall be valid for a period of one year from the date of action unless an active building permit has been issued and maintained for the proposed construction.</p>
4.	<p>Indemnification. The applicant agrees, at his or her sole expense, to defend, indemnify, and hold harmless the City, its public officials, officers, employees, and assigns, from any liability; and shall reimburse the City for any expense incurred, resulting from, or in connection with any project approvals. This includes any appeal, claim, suit, or other legal proceeding, to attack, set aside, void, or annul any project approval. The City shall promptly notify the applicant of any legal proceeding, and shall cooperate fully in the defense. The City may, at its sole discretion, participate in any such legal action, but participation shall not relieve the applicant of any obligation under this condition. Should any party bring any legal action in connection with this project, the Superior Court of the County of Monterey, California, shall be the situs and have jurisdiction for the resolution of all such actions by the parties hereto.</p>
5.	<p>Conditions of Approval. These Conditions of Approval shall be signed and returned to the Community Planning and Building Department prior to the issuance of a Notice of Authorized Work. These signed conditions shall also be printed on a full-size plan sheet in the building plan set along with any prior conditions of approval of prior Design Study Applications.</p>
6.	<p>Notice of Authorized Work. A building permit is not required; however, the applicant shall apply for and obtain a Notice of Authorized Work from the Building Division prior to commencement of work. To apply for the Notice of Authorized Work, please submit the Scope of Work Declaration through the city's online permit portal.</p>

Acknowledgement and acceptance of conditions of approval:

 Property Owner Signature

 Printed Name

 Date

 Applicant Signature

 Printed Name

 Date

Once signed, please email to jolander@ci.carmel.ca.us.



Fwd: Scans

Bill Hill <billhill45@icloud.com>

Wed, Aug 14, 2024 at 2:44 PM

To: City of Carmel Planning <jolander@ci.carmel.ca.us>

Here are the scans we talked about yesterday. I hope they will be what you need.

The project involves removal and replacement of the 7 upper story windows as show on the elevation. The new windows are to be dark bronze aluminum clad, with divided lights to match the old ones. The wooden trim around the windows is Oxford brown and should blend nicely with the bronze windows.

I will be out of the State for the next two months but available by phone or email. Sage Scherman, my contractor, will be in town. Please contact us if you need anything else. It was a pleasure to meet you yesterday. Thank you for helping us make the buildings dry and safe for the working people that live there.

Begin forwarded message:

From: Barbara Heisel <cpc@carmelprint.com>

Subject: Scans

Date: August 14, 2024 at 2:24:24 PM PDT

To: billhill45@icloud.com

Here you go....

see attached.

6 attachments

 Hills_8thAve.pdf
34K

 Hills_Authorization_Letter.pdf
416K

 Hills_Photo_1.pdf
808K

 Hills_Photo_2.pdf
747K

 Hills_Photo_3.pdf
698K

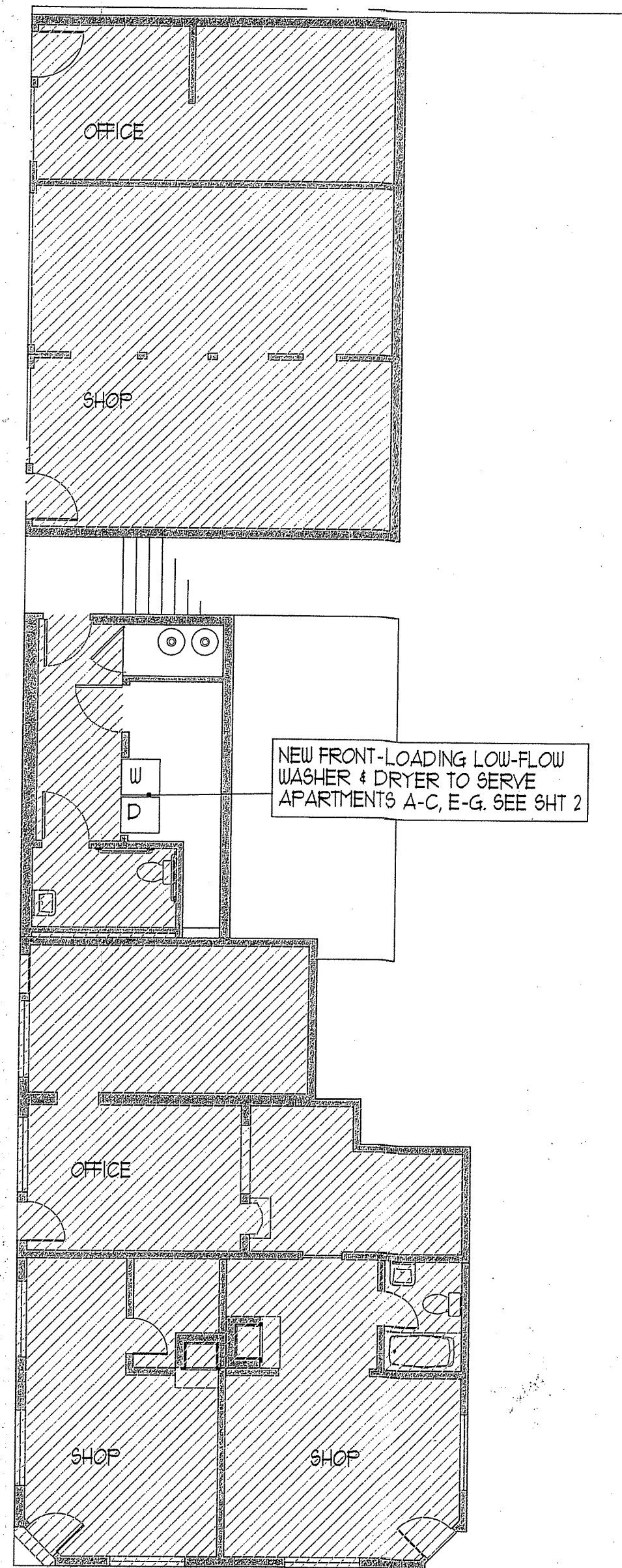
 Hills_Corners_36x24.pdf
620K



8th Avenue

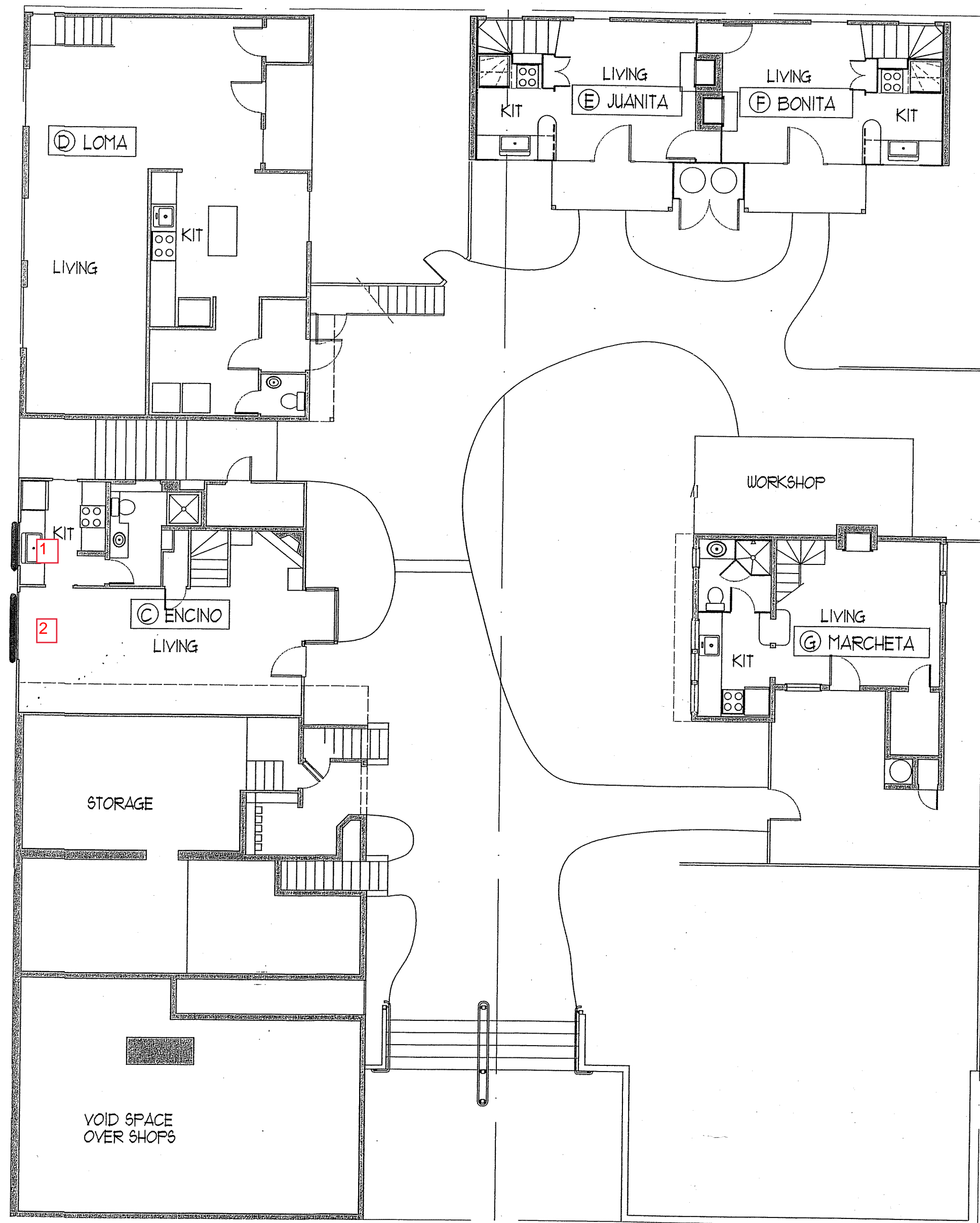
A.A.

EIGHTH AVENUE



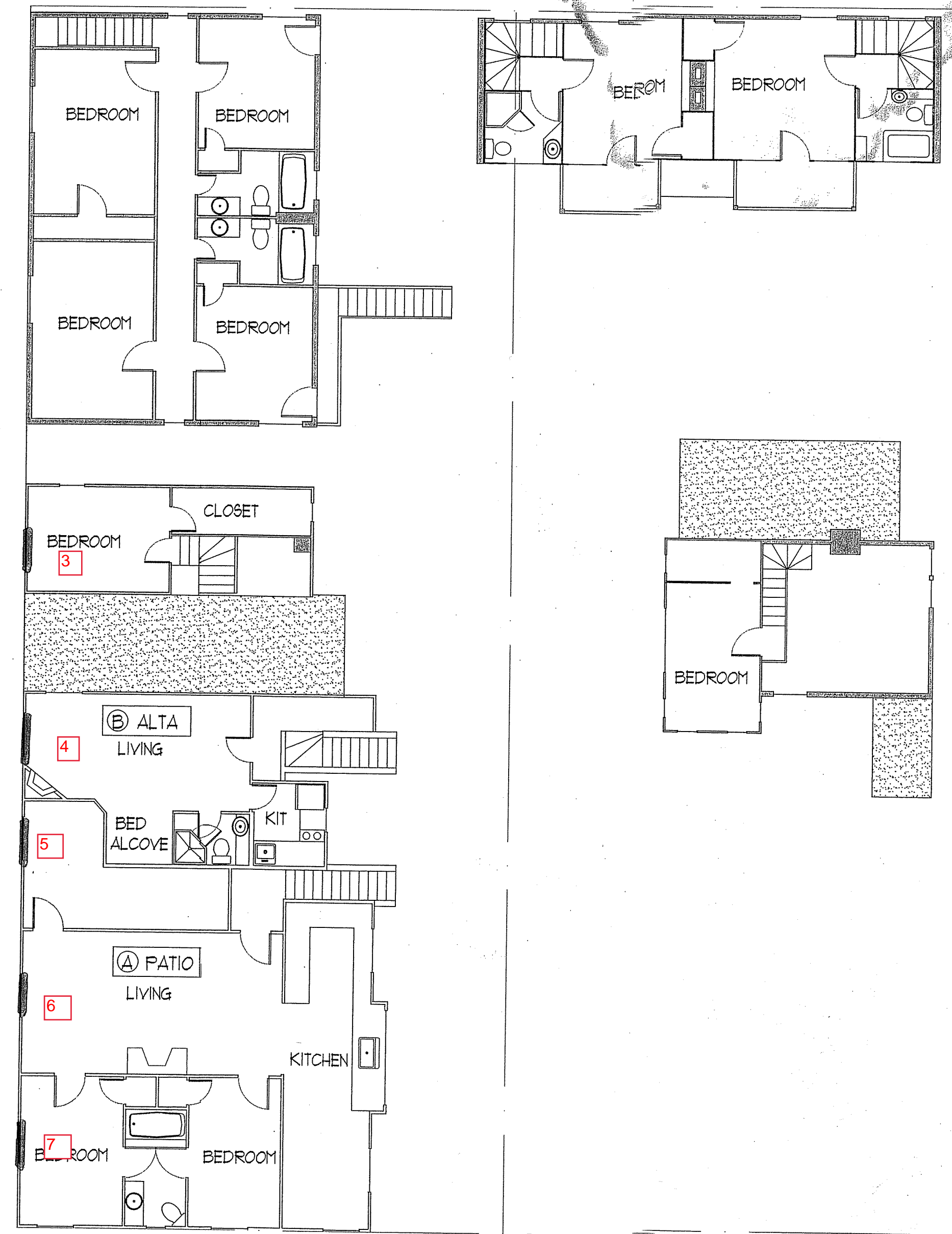
STREET LEVEL PLAN
1/4" = 1'-0"

8th Ave



COURTYARD LEVEL PLAN
1/4" = 1'-0"

8th Ave



UPPER LEVEL PLAN
1/4" = 1'-0"



HILL'S CORNERS EXISTING RESIDENTIAL PLUMBING FIXTURE SCHEDULE											
FIXTURE TYPE	FIXTURE UNITS	(A) PATIO NO. TOTAL	(B) ALTA NO. TOTAL	(C) ENCINO NO. TOTAL	(D) LOMA NO. TOTAL	(E) JUANITA NO. TOTAL	(F) BONITA NO. TOTAL	(G) MARCHETA NO. TOTAL	TOTAL		
KITCHEN SINK	2.0	1	2.0	1	2.0	1	2.0	1	2.0	7	14.0
KITCHEN SINK W/ LO FLOW DW	1.5	-	-	-	-	-	-	-	-	-	-
BATH LAV	1.0	1	1.0	1	1.0	3	3.0	1	1.0	9	9.0
TOILET	1.1	1	1.1	1	1.1	3	3.0	1	1.1	9	15.3
W/ET TOILET	0.8	-	-	-	-	-	-	-	-	-	-
SHOWER	2.0	-	1	2.0	1	2.0	-	1	2.0	4	8.0
TUB/SHOWER	2.0	1	2.0	-	2	4.0	-	-	-	4	8.0
LAUNDRY TUB	2.0	-	-	-	-	-	-	-	-	-	-
CLOTHES WASHER	2.0	-	-	-	1	2.0	-	-	-	1	2.0
LOW FLOW CLOTHES WASHER	1.0	-	-	-	-	-	-	-	-	-	-
TOTAL EXISTING:		6.1	6.1	6.1	16.1	6.1	6.1	6.1		56.3	

HILL'S CORNERS PROPOSED RESIDENTIAL PLUMBING FIXTURE SCHEDULE											
FIXTURE TYPE	FIXTURE UNITS	(A) PATIO NO. TOTAL	(B) ALTA NO. TOTAL	(C) ENCINO NO. TOTAL	(D) LOMA NO. TOTAL	(E) JUANITA NO. TOTAL	(F) BONITA NO. TOTAL	(G) MARCHETA NO. TOTAL	TOTAL		
KITCHEN SINK	2.0	1	2.0	1	2.0	1	2.0	1	2.0	7	14.0
KITCHEN SINK W/ LO FLOW DW	1.5	-	-	-	-	-	-	-	-	-	-
BATH LAV	1.0	1	1.0	1	1.0	3	3.0	1	1.0	9	9.0
TOILET	1.1	1	1.1	1	1.1	3	3.0	1	1.1	8	14.4
W/ET TOILET	0.8	-	-	-	-	-	-	-	-	-	-
SHOWER	2.0	-	1	2.0	1	2.0	-	1	2.0	4	8.0
TUB/SHOWER	2.0	1	2.0	-	2	4.0	-	-	-	4	8.0
LAUNDRY TUB	2.0	-	-	-	-	-	-	-	-	-	-
CLOTHES WASHER	2.0	-	-	-	1	2.0	-	-	-	1	2.0
LOW FLOW CLOTHES WASHER	1.0	1	1.0	1	1.0	-	-	-	-	6	6.0
TOTAL PROPOSED:		6.1	6.1	6.1	16.1	6.1	6.1	6.1		55.1	

SAN CARLOS STREET

PROJECT DATA: NORTHWEST CORNER EIGHTH & SAN CARLOS
 INSTALL COMMON WASHER/DRYER FOR 6 RESIDENTIAL UNITS
 REPLACE 8 HET (1.1 FU) TOILETS WITH 8 W/ET (0.8 FU) TOILETS

OWNER: BILL & DANIELLE HILL
 P.O. BOX 2055
 CARMEL, CALIFORNIA 93921-2055
 831.601.4500

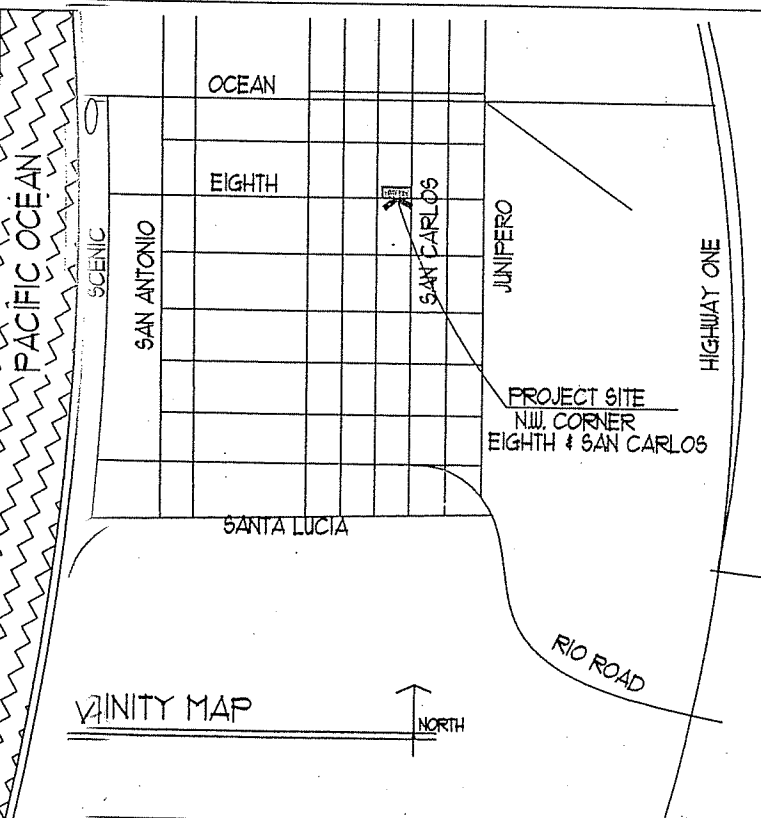
LOCATION: N.W. CORNER EIGHTH & SAN CARLOS
 BLOCK 91, LOTS 11 & 13, CITY OF CARMEL
 APN 010-145-001-000

ZONING: RESIDENTIAL / LIMITED COMMERCIAL
 NO. OF STORIES: TWO/THREE
 COMMERCIAL: MAX. 1 SPACES, 2200 SQUARE FEET
 RESIDENTIAL: 7 UNITS, 4619 SQUARE FEET
 OWNER STORAGE/MAINTENANCE/MECHANICAL: 664 SF.
 TOTAL BUILDING AREA: 1,483 SQUARE FEET

PROJECT NOTES:

- COMMERCIAL AREAS AND SPACES (SHOWN AS Hatched) ARE NOT A PART OF THIS PROJECT AND ARE NOT INCLUDED IN PLUMBING FIXTURE UNIT CHARTS.
- AS REQUIRED BY MFWMD STANDARDS, FIXTURE UNITS ARE BASED ON EQUIVALENT PROVISION OF A CLOTHES WASHING MACHINE FOR EACH UNIT, EVEN IF A COMMON MACHINE IS PROVIDED.
- UNIT 'D' LOMA HAS AN EXISTING CLOTHES WASHING MACHINE, AND IS NOT INCLUDED IN THE FIXTURE COUNT FOR THE PROPOSED COMMON MACHINE. EXISTING TOILETS IN UNIT 'D' ARE BEING REPLACED TO MEET THE FIXTURE UNIT REQ'T.

INDEX TO DRAWINGS



These drawings and the designs represented herein are the property of Brian T. Congleton Architect. Use in any manner is prohibited without the prior express written consent of the Architect.

DRAWN BY: BTC
 DATE: 12-6-13
 REVISED:

Congleton Architect AIA
 Post Office Box 4118 Carmel, CA 93921 (831) 620-1928 License No. C-18030

HILL'S CORNERS WASHER-DRYER INSTALLATION
 N.W. CORNER EIGHTH & SAN CARLOS - CARMEL, CA

SHEET NUMBER
1



3

1

2

4

5

6

7



NO PARKING
8 AM
TO 6 PM
EXCEPT



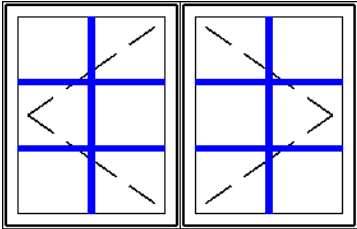
Jason Gorman
429 Front street
Salinas Ca ,93901

QUOTE BY : Jason Gorman
SOLD TO :
PO# :
Ship Via : Ground

QUOTE # : JW240500CMR - Version 0
SHIP TO :
PROJECT NAME: Sage - NW of 8th and san Carlos
REFERENCE :

U-Factor Weighted Average: 0.28

SHGC Weighted Average: 0.17

LINE	LOCATION SIZE INFO	BOOK CODE DESCRIPTION	NET UNIT PRICE	QTY	EXTENDED PRICE
Line 1	Unit C Rough Opening : 70 1/4 X 45 1/4	 <p>Frame Size : 69 1/2 X 44 1/2 Siteline Standard, Clad Casement, Auralast Pine, 2 Wide Chestnut Bronze Exterior, Primed Interior, Nail Fin (Standard), Color Match Metal DripCap, 4 9/16 Jamb, 4/4 Thick, Left/Right, Stainless Steel Operator/Hinge, Traditional Handle, White Hardware, US National-WDMA/ASTM, DP 35, Insulated SunResist Annealed Glass, Neat, Protective Film, Black Spacer, Argon Filled, Traditional Glz Bd, Chestnut Bronze SDL, 7/8" Bead SDL w/Perm Wood Trad'l. Bead Int BAR, Light Bronze Shadow Bar, Colonial All Lite(s) 2 Wide 3 High BetterVue Mesh Brilliant White Screen, This mull configuration complies with AAMA 450 standards and is professional engineer-approved. PEV 2024.2.0.4753/PDV 7.494 (06/06/24)CW</p>	\$2,595.08	1	\$2,595.08

Viewed from Exterior. Scale: 1/2" = 1'
Line 1-1(A1)
Rough Opening : 35 1/2 X 45 1/4

Frame Size : 34 3/4 X 44 1/2
Siteline Standard, Clad Casement, Auralast Pine, Chestnut Bronze Exterior, Primed Interior, Nail Fin (Standard), 3 3/16 Jamb, Hinge Left, Traditional Handle, White Hardware, Stainless Steel Operator/Hinge, US National-WDMA/ASTM, PG 35, Insulated SunResist Annealed Glass, Neat, Protective Film, Black Spacer, Argon Filled, Traditional Glz Bd, Chestnut Bronze SDL, 7/8" Bead SDL w/Perm Wood Trad'l. Bead Int BAR, Light Bronze Shadow Bar, Colonial 2 Wide 3 High BetterVue Mesh Brilliant White Screen, Product Warranty Covers Accidental* Glass Breakage *Refer to the JELD-WEN warranty for additional information, *Custom-Width*, *Custom-Height*, IGThick=0.726(1/8 / 1/8), Clear Opening:24.9w, 40h, 6.9 sf
U-Factor: 0.28, SHGC: 0.17, VLT: 0.39, Energy Rating: 15.00, CPD: JEL-N-877-01878-00002

LINE	LOCATION SIZE INFO	BOOK CODE DESCRIPTION	NET UNIT PRICE	QTY	EXTENDED PRICE
------	-----------------------	--------------------------	-------------------	-----	-------------------

PEV 2024.2.0.4753/PDV 7.494 (06/06/24)CW

Line 1-2(A2)

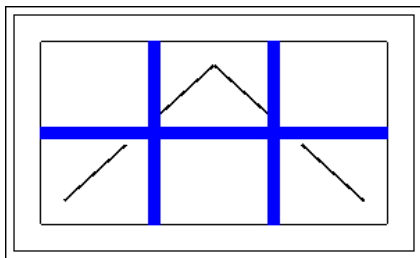
Rough Opening : 35 1/2 X 45 1/4

Frame Size : 34 3/4 X 44 1/2
 Sitrine Standard, Clad Casement, Auralast Pine,
 Chestnut Bronze Exterior,
 Primed Interior,
 Nail Fin (Standard),
 3 3/16 Jamb,
 Hinge Right,
 Traditional Handle, White Hardware,
 Stainless Steel Operator/Hinge,
 US National-WDMA/ASTM, PG 35,
 Insulated SunResist Annealed Glass, Neat, Protective Film, Black Spacer,
 Argon Filled, Traditional Glz Bd,
 Chestnut Bronze SDL, 7/8" Bead SDL w/Perm Wood Trad'l. Bead Int BAR,
 Light Bronze Shadow Bar, Colonial 2 Wide 3 High
 BetterVue Mesh Brilliant White Screen,
 Product Warranty Covers Accidental* Glass Breakage *Refer to the JELD-
 WEN warranty for additional information, *Custom-Width*, *Custom-
 Height*, IGThick=0.726(1/8 / 1/8), Clear Opening:24.9w, 40h, 6.9 sf
 U-Factor: 0.28, SHGC: 0.17, VLT: 0.39, Energy Rating: 15.00, CPD: JEL-N-
 877-01878-00002
 PEV 2024.2.0.4753/PDV 7.494 (06/06/24)CW

Line 2

Unit C

Rough Opening : 36 1/4 X 22 1/4



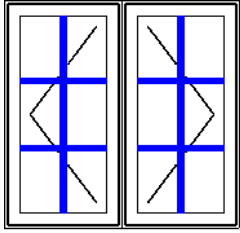
Viewed from Exterior. Scale: 1/2" = 1'

Frame Size : 35 1/2 X 21 1/2
 Sitrine Standard, Clad Awning, Auralast Pine,
 Chestnut Bronze Exterior,
 Primed Interior,
 Nail Fin (Standard), Color Match Metal DripCap,
 4 9/16 Jamb, 4/4 Thick,
 Venting,
 Traditional Handle, White Hardware, 2 Locks,
 Stainless Steel Operator/Hinge,
 US National-WDMA/ASTM, PG 35,
 Insulated SunResist Annealed Glass, Neat, Protective Film, Black Spacer,
 Argon Filled, Traditional Glz Bd,
 Chestnut Bronze SDL, 7/8" Bead SDL w/Perm Wood Trad'l. Bead Int BAR,
 Light Bronze Shadow Bar, Colonial 3 Wide 2 High
 BetterVue Mesh Brilliant White Screen,
 Product Warranty Covers Accidental* Glass Breakage *Refer to the JELD-
 WEN warranty for additional information, *Custom-Width*, *Custom-
 Height*, IGThick=0.726(1/8 / 1/8),
 U-Factor: 0.27, SHGC: 0.17, VLT: 0.39, Energy Rating: 16.00, CPD: JEL-N-
 879-05888-00002
 PEV 2024.2.0.4753/PDV 7.494 (06/06/24)CW

\$1,155.07 1 \$1,155.07

LINE	LOCATION SIZE INFO	BOOK CODE DESCRIPTION	NET UNIT PRICE	QTY	EXTENDED PRICE
------	-----------------------	--------------------------	-------------------	-----	-------------------

Line 3 Unit C
Rough Opening : 46 1/4 X 44 3/4



Viewed from Exterior. Scale: 1/2" = 1'

Frame Size : 45 1/2 X 44
 Sitrine Standard, Clad Casement, Auralast Pine, 2 Wide
 Chestnut Bronze Exterior,
 Primed Interior,
 Nail Fin (Standard), Color Match Metal DripCap,
 4 9/16 Jamb, 4/4 Thick,
 Left/Right,
 Stainless Steel Operator/Hinge,
 Traditional Handle, White Hardware,
 US National-WDMA/ASTM, DP 35,
 Insulated SunResist Annealed Glass, Neat, Protective Film, Black Spacer,
 Argon Filled, Traditional Glz Bd,
 Chestnut Bronze SDL, 7/8" Bead SDL w/Perm Wood Trad'l. Bead Int BAR,
 Light Bronze Shadow Bar, Colonial All Lite(s) 2 Wide 3 High
 BetterVue Mesh Brilliant White Screen,
 This mull configuration complies with AAMA 450 standards and is
 professional engineer-approved.
 PEV 2024.2.0.4753/PDV 7.494 (06/06/24)CW

\$2,295.07 1 \$2,295.07

Line 3-1(A1)
Rough Opening : 23 1/2 X 44 3/4

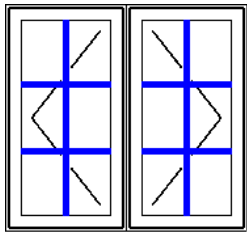
Frame Size : 22 3/4 X 44
 Sitrine Standard, Clad Casement, Auralast Pine,
 Chestnut Bronze Exterior,
 Primed Interior,
 Nail Fin (Standard),
 3 3/16 Jamb,
 Hinge Left,
 Traditional Handle, White Hardware,
 Stainless Steel Operator/Hinge,
 US National-WDMA/ASTM, PG 35,
 Insulated SunResist Annealed Glass, Neat, Protective Film, Black Spacer,
 Argon Filled, Traditional Glz Bd,
 Chestnut Bronze SDL, 7/8" Bead SDL w/Perm Wood Trad'l. Bead Int BAR,
 Light Bronze Shadow Bar, Colonial 2 Wide 3 High
 BetterVue Mesh Brilliant White Screen,
 Product Warranty Covers Accidental* Glass Breakage *Refer to the JELD-
 WEN warranty for additional information, *Custom-Width*, *Custom-
 Height*, IGThick=0.726(1/8 / 1/8), Clear Opening:12.9w, 39.5h, 3.5 sf
 U-Factor: 0.28, SHGC: 0.17, VLT: 0.39, Energy Rating: 15.00, CPD: JEL-N-
 877-01878-00002
 PEV 2024.2.0.4753/PDV 7.494 (06/06/24)CW

Line 3-2(A2)
Rough Opening : 23 1/2 X 44 3/4

Frame Size : 22 3/4 X 44
 Sitrine Standard, Clad Casement, Auralast Pine,
 Chestnut Bronze Exterior,
 Primed Interior,
 Nail Fin (Standard),
 3 3/16 Jamb,
 Hinge Right,
 Traditional Handle, White Hardware,
 Stainless Steel Operator/Hinge,
 US National-WDMA/ASTM, PG 35,
 Insulated SunResist Annealed Glass, Neat, Protective Film, Black Spacer,
 Argon Filled, Traditional Glz Bd,

LINE	LOCATION SIZE INFO	BOOK CODE DESCRIPTION	NET UNIT PRICE	QTY	EXTENDED PRICE
		Chestnut Bronze SDL, 7/8" Bead SDL w/Perm Wood Trad'l. Bead Int BAR, Light Bronze Shadow Bar, Colonial 2 Wide 3 High BetterVue Mesh Brilliant White Screen, Product Warranty Covers Accidental* Glass Breakage *Refer to the JELD-WEN warranty for additional information, *Custom-Width*, *Custom-Height*, IGThick=0.726(1/8 / 1/8), Clear Opening:12.9w, 39.5h, 3.5 sf U-Factor: 0.28, SHGC: 0.17, VLT: 0.39, Energy Rating: 15.00, CPD: JEL-N-877-01878-00002 PEV 2024.2.0.4753/PDV 7.494 (06/06/24)CW			

Line 4 Unit B
Rough Opening : 46 3/4 X 44



Viewed from Exterior. Scale: 1/2" = 1'

Frame Size : 46 X 43 1/4
Siteline Standard, Clad Casement, Auralast Pine, 2 Wide
Chestnut Bronze Exterior,
Primed Interior,
Nail Fin (Standard), Color Match Metal DripCap,
4 9/16 Jamb, 4/4 Thick,
Left/Right,
Stainless Steel Operator/Hinge,
Traditional Handle, White Hardware,
US National-WDMA/ASTM, DP 35,
Insulated SunResist Annealed Glass, Neat, Protective Film, Black Spacer,
Argon Filled, Traditional Glz Bd,
Chestnut Bronze SDL, 7/8" Bead SDL w/Perm Wood Trad'l. Bead Int BAR, Light Bronze Shadow Bar, Colonial All Lite(s) 2 Wide 3 High
BetterVue Mesh Brilliant White Screen,
This mull configuration complies with AAMA 450 standards and is professional engineer-approved.
PEV 2024.2.0.4753/PDV 7.494 (06/06/24)CW

\$2,295.07 1 \$2,295.07

Line 4-1(A1)
Rough Opening : 23 3/4 X 44

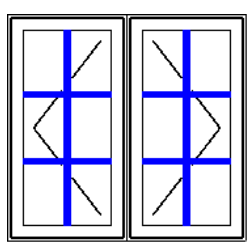
Frame Size : 23 X 43 1/4
Siteline Standard, Clad Casement, Auralast Pine,
Chestnut Bronze Exterior,
Primed Interior,
Nail Fin (Standard),
3 3/16 Jamb,
Hinge Left,
Traditional Handle, White Hardware,
Stainless Steel Operator/Hinge,
US National-WDMA/ASTM, PG 35,
Insulated SunResist Annealed Glass, Neat, Protective Film, Black Spacer,
Argon Filled, Traditional Glz Bd,
Chestnut Bronze SDL, 7/8" Bead SDL w/Perm Wood Trad'l. Bead Int BAR, Light Bronze Shadow Bar, Colonial 2 Wide 3 High
BetterVue Mesh Brilliant White Screen,
Product Warranty Covers Accidental* Glass Breakage *Refer to the JELD-WEN warranty for additional information, *Custom-Width*, *Custom-Height*, IGThick=0.726(1/8 / 1/8), Clear Opening:13.1w, 38.8h, 3.5 sf
U-Factor: 0.28, SHGC: 0.17, VLT: 0.39, Energy Rating: 15.00, CPD: JEL-N-877-01878-00002
PEV 2024.2.0.4753/PDV 7.494 (06/06/24)CW

LINE	LOCATION SIZE INFO	BOOK CODE DESCRIPTION	NET UNIT PRICE	QTY	EXTENDED PRICE
------	-----------------------	--------------------------	-------------------	-----	-------------------

Line 4-2(A2)
Rough Opening : 23 3/4 X 44

Frame Size : 23 X 43 1/4
Siteline Standard, Clad Casement, Auralast Pine,
Chestnut Bronze Exterior,
Primed Interior,
Nail Fin (Standard),
3 3/16 Jamb,
Hinge Right,
Traditional Handle, White Hardware,
Stainless Steel Operator/Hinge,
US National-WDMA/ASTM, PG 35,
Insulated SunResist Annealed Glass, Neat, Protective Film, Black Spacer,
Argon Filled, Traditional Glz Bd,
Chestnut Bronze SDL, 7/8" Bead SDL w/Perm Wood Trad'l. Bead Int BAR,
Light Bronze Shadow Bar, Colonial 2 Wide 3 High
BetterVue Mesh Brilliant White Screen,
Product Warranty Covers Accidental* Glass Breakage *Refer to the JELD-
WEN warranty for additional information, *Custom-Width*, *Custom-
Height*, IGThick=0.726(1/8 / 1/8), Clear Opening:13.1w, 38.8h, 3.5 sf
U-Factor: 0.28, SHGC: 0.17, VLT: 0.39, Energy Rating: 15.00, CPD: JEL-N-
877-01878-00002
PEV 2024.2.0.4753/PDV 7.494 (06/06/24)CW

Line 5 Unit A
Rough Opening : 46 1/4 X 44



Viewed from Exterior. Scale: 1/2" =1'

Frame Size : 45 1/2 X 43 1/4
Siteline Standard, Clad Casement, Auralast Pine, 2 Wide
Chestnut Bronze Exterior,
Primed Interior,
Nail Fin (Standard), Color Match Metal DripCap,
4 9/16 Jamb, 4/4 Thick,
Left/Right,
Stainless Steel Operator/Hinge,
Traditional Handle, White Hardware,
US National-WDMA/ASTM, DP 35,
Insulated SunResist Annealed Glass, Neat, Protective Film, Black Spacer,
Argon Filled, Traditional Glz Bd,
Chestnut Bronze SDL, 7/8" Bead SDL w/Perm Wood Trad'l. Bead Int BAR,
Light Bronze Shadow Bar, Colonial All Lite(s) 2 Wide 3 High
BetterVue Mesh Brilliant White Screen,
This mull configuration complies with AAMA 450 standards and is
professional engineer-approved.
PEV 2024.2.0.4753/PDV 7.494 (06/06/24)CW

\$2,295.07 1 \$2,295.07

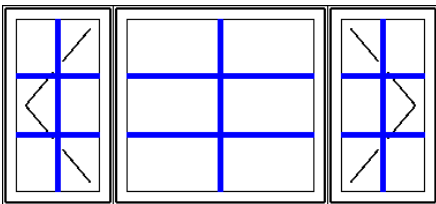
Line 5-1(A1)
Rough Opening : 23 1/2 X 44

Frame Size : 22 3/4 X 43 1/4
Siteline Standard, Clad Casement, Auralast Pine,
Chestnut Bronze Exterior,
Primed Interior,
Nail Fin (Standard),
3 3/16 Jamb,
Hinge Left,
Traditional Handle, White Hardware,
Stainless Steel Operator/Hinge,
US National-WDMA/ASTM, PG 35,
Insulated SunResist Annealed Glass, Neat, Protective Film, Black Spacer,
Argon Filled, Traditional Glz Bd,

LINE	LOCATION SIZE INFO	BOOK CODE DESCRIPTION	NET UNIT PRICE	QTY	EXTENDED PRICE
		Chestnut Bronze SDL, 7/8" Bead SDL w/Perm Wood Trad'l. Bead Int BAR, Light Bronze Shadow Bar, Colonial 2 Wide 3 High BetterVue Mesh Brilliant White Screen, Product Warranty Covers Accidental* Glass Breakage *Refer to the JELD-WEN warranty for additional information, *Custom-Width*, *Custom-Height*, IGThick=0.726(1/8 / 1/8), Clear Opening:12.9w, 38.8h, 3.4 sf U-Factor: 0.28, SHGC: 0.17, VLT: 0.39, Energy Rating: 15.00, CPD: JEL-N-877-01878-00002 PEV 2024.2.0.4753/PDV 7.494 (06/06/24)CW			

Line 5-2(A2)	Rough Opening : 23 1/2 X 44	Frame Size : 22 3/4 X 43 1/4 Siteline Standard, Clad Casement, Auralast Pine, Chestnut Bronze Exterior, Primed Interior, Nail Fin (Standard), 3 3/16 Jamb, Hinge Right, Traditional Handle, White Hardware, Stainless Steel Operator/Hinge, US National-WDMA/ASTM, PG 35, Insulated SunResist Annealed Glass, Neat, Protective Film, Black Spacer, Argon Filled, Traditional Glz Bd, Chestnut Bronze SDL, 7/8" Bead SDL w/Perm Wood Trad'l. Bead Int BAR, Light Bronze Shadow Bar, Colonial 2 Wide 3 High BetterVue Mesh Brilliant White Screen, Product Warranty Covers Accidental* Glass Breakage *Refer to the JELD-WEN warranty for additional information, *Custom-Width*, *Custom-Height*, IGThick=0.726(1/8 / 1/8), Clear Opening:12.9w, 38.8h, 3.4 sf U-Factor: 0.28, SHGC: 0.17, VLT: 0.39, Energy Rating: 15.00, CPD: JEL-N-877-01878-00002 PEV 2024.2.0.4753/PDV 7.494 (06/06/24)CW			
--------------	-----------------------------	---	--	--	--

Line 6	Unit A	Frame Size : 94 1/2 X 43 1/4 Siteline Standard, Clad Casement, Auralast Pine, 3 Wide w/Center Picture Flanker= 24 , Chestnut Bronze Exterior, Primed Interior, Nail Fin (Standard), Color Match Metal DripCap, 4 9/16 Jamb, 4/4 Thick, Left/Stat/Right, Stainless Steel Operator/Hinge, Traditional Handle, White Hardware, US National-WDMA/ASTM, DP 35, Insulated SunResist Annealed Glass, Neat, Protective Film, Black Spacer, Argon Filled, Traditional Glz Bd, Chestnut Bronze SDL, 7/8" Bead SDL w/Perm Wood Trad'l. Bead Int BAR, Light Bronze Shadow Bar, Colonial All Lite(s) BetterVue Mesh Brilliant White Screen, This mull configuration complies with AAMA 450 standards and is professional engineer-approved. PEV 2024.2.0.4753/PDV 7.494 (06/06/24)CW			
--------	--------	--	--	--	--

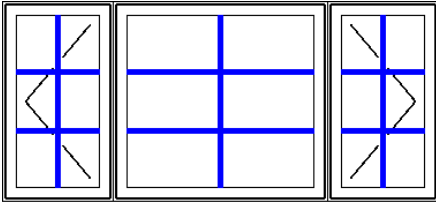


Viewed from Exterior. Scale: 1/2" =1'

\$3,424.13 1 \$3,424.13

LINE	LOCATION SIZE INFO	BOOK CODE DESCRIPTION	NET UNIT PRICE	QTY	EXTENDED PRICE
Line 6-1(A1)	Rough Opening : 24 3/4 X 44	Frame Size : 24 X 43 1/4 Sitrine Standard, Clad Casement, Auralast Pine, Chestnut Bronze Exterior, Primed Interior, Nail Fin (Standard), 3 3/16 Jamb, Hinge Left, Traditional Handle, White Hardware, Stainless Steel Operator/Hinge, US National-WDMA/ASTM, PG 35, Insulated SunResist Annealed Glass, Neat, Protective Film, Black Spacer, Argon Filled, Traditional Glz Bd, Chestnut Bronze SDL, 7/8" Bead SDL w/Perm Wood Trad'l. Bead Int BAR, Light Bronze Shadow Bar, Colonial 2 Wide 3 High BetterVue Mesh Brilliant White Screen, Product Warranty Covers Accidental* Glass Breakage *Refer to the JELD- WEN warranty for additional information, *Custom-Height*, IGThick=0.726(1/8 / 1/8), Clear Opening:14.1w, 38.8h, 3.8 sf U-Factor: 0.28, SHGC: 0.17, VLT: 0.39, Energy Rating: 15.00, CPD: JEL-N- 877-01878-00002 PEV 2024.2.0.4753/PDV 7.494 (06/06/24)CW			
Line 6-2(A2)	Rough Opening : 47 1/4 X 44	Frame Size : 46 1/2 X 43 1/4 Sitrine Standard, Clad Casement, Auralast Pine, Chestnut Bronze Exterior, Primed Interior, Nail Fin (Standard), 3 3/16 Jamb, Stationary, US National-WDMA/ASTM, PG 35, Insulated SunResist Annealed Glass, Neat, Protective Film, Black Spacer, Argon Filled, Traditional Glz Bd, Chestnut Bronze SDL, 7/8" Bead SDL w/Perm Wood Trad'l. Bead Int BAR, Light Bronze Shadow Bar, Colonial 2 Wide 3 High Product Warranty Covers Accidental* Glass Breakage *Refer to the JELD- WEN warranty for additional information, *Custom-Width*, *Custom- Height*, IGThick=0.726(1/8 / 1/8), U-Factor: 0.28, SHGC: 0.17, VLT: 0.39, Energy Rating: 15.00, CPD: JEL-N- 877-01878-00002 PEV 2024.2.0.4753/PDV 7.494 (06/06/24)CW			
Line 6-3(A3)	Rough Opening : 24 3/4 X 44	Frame Size : 24 X 43 1/4 Sitrine Standard, Clad Casement, Auralast Pine, Chestnut Bronze Exterior, Primed Interior, Nail Fin (Standard), 3 3/16 Jamb, Hinge Right, Traditional Handle, White Hardware, Stainless Steel Operator/Hinge, US National-WDMA/ASTM, PG 35, Insulated SunResist Annealed Glass, Neat, Protective Film, Black Spacer, Argon Filled, Traditional Glz Bd,			

LINE	LOCATION SIZE INFO	BOOK CODE DESCRIPTION	NET UNIT PRICE	QTY	EXTENDED PRICE
		Chestnut Bronze SDL, 7/8" Bead SDL w/Perm Wood Trad'l. Bead Int BAR, Light Bronze Shadow Bar, Colonial 2 Wide 3 High BetterVue Mesh Brilliant White Screen, Product Warranty Covers Accidental* Glass Breakage *Refer to the JELD-WEN warranty for additional information, *Custom-Height*, IGThick=0.726(1/8 / 1/8), Clear Opening:14.1w, 38.8h, 3.8 sf U-Factor: 0.28, SHGC: 0.17, VLT: 0.39, Energy Rating: 15.00, CPD: JEL-N-877-01878-00002 PEV 2024.2.0.4753/PDV 7.494 (06/06/24)CW			

Line 7	Unit A	Frame Size : 94 1/2 X 43 1/4 Siteline Standard, Clad Casement, Auralast Pine, 3 Wide w/Center Picture Flanker= 24 , Chestnut Bronze Exterior, Primed Interior, Nail Fin (Standard), Color Match Metal DripCap, 4 9/16 Jamb, 4/4 Thick, Left/Stat/Right, Stainless Steel Operator/Hinge, Traditional Handle, White Hardware, US National-WDMA/ASTM, DP 35, Insulated SunResist Annealed Glass, Neat, Protective Film, Black Spacer, Argon Filled, Traditional Glz Bd, Chestnut Bronze SDL, 7/8" Bead SDL w/Perm Wood Trad'l. Bead Int BAR, Light Bronze Shadow Bar, Colonial All Lite(s) BetterVue Mesh Brilliant White Screen, This mull configuration complies with AAMA 450 standards and is professional engineer-approved. PEV 2024.2.0.4753/PDV 7.494 (06/06/24)CW			
		Viewed from Exterior. Scale: 1/2" =1'			
					
			\$3,424.13	1	\$3,424.13

Line 7-1(A1)		Frame Size : 24 X 43 1/4 Siteline Standard, Clad Casement, Auralast Pine, Chestnut Bronze Exterior, Primed Interior, Nail Fin (Standard), 3 3/16 Jamb, Hinge Left, Traditional Handle, White Hardware, Stainless Steel Operator/Hinge, US National-WDMA/ASTM, PG 35, Insulated SunResist Annealed Glass, Neat, Protective Film, Black Spacer, Argon Filled, Traditional Glz Bd, Chestnut Bronze SDL, 7/8" Bead SDL w/Perm Wood Trad'l. Bead Int BAR, Light Bronze Shadow Bar, Colonial 2 Wide 3 High BetterVue Mesh Brilliant White Screen, Product Warranty Covers Accidental* Glass Breakage *Refer to the JELD-WEN warranty for additional information, *Custom-Height*, IGThick=0.726(1/8 / 1/8), Clear Opening:14.1w, 38.8h, 3.8 sf U-Factor: 0.28, SHGC: 0.17, VLT: 0.39, Energy Rating: 15.00, CPD: JEL-N-877-01878-00002 PEV 2024.2.0.4753/PDV 7.494 (06/06/24)CW			
--------------	--	---	--	--	--

LINE	LOCATION SIZE INFO	BOOK CODE DESCRIPTION	NET UNIT PRICE	QTY	EXTENDED PRICE
------	-----------------------	--------------------------	-------------------	-----	-------------------


Line 7-2(A2)
Rough Opening : 47 1/4 X 44

Frame Size : 46 1/2 X 43 1/4
Siteline Standard, Clad Casement, Auralast Pine,
Chestnut Bronze Exterior,
Primed Interior,
Nail Fin (Standard),
3 3/16 Jamb,
Stationary,
US National-WDMA/ASTM, PG 35,
Insulated SunResist Annealed Glass, Neat, Protective Film, Black Spacer,
Argon Filled, Traditional Glz Bd,
Chestnut Bronze SDL, 7/8" Bead SDL w/Perm Wood Trad'l. Bead Int BAR,
Light Bronze Shadow Bar, Colonial 2 Wide 3 High
Product Warranty Covers Accidental* Glass Breakage *Refer to the JELD-
WEN warranty for additional information, *Custom-Width*, *Custom-
Height*, IGThick=0.726(1/8 / 1/8),
U-Factor: 0.28, SHGC: 0.17, VLT: 0.39, Energy Rating: 15.00, CPD: JEL-N-
877-01878-00002
PEV 2024.2.0.4753/PDV 7.494 (06/06/24)CW

Line 7-3(A3)
Rough Opening : 24 3/4 X 44

Frame Size : 24 X 43 1/4
Siteline Standard, Clad Casement, Auralast Pine,
Chestnut Bronze Exterior,
Primed Interior,
Nail Fin (Standard),
3 3/16 Jamb,
Hinge Right,
Traditional Handle, White Hardware,
Stainless Steel Operator/Hinge,
US National-WDMA/ASTM, PG 35,
Insulated SunResist Annealed Glass, Neat, Protective Film, Black Spacer,
Argon Filled, Traditional Glz Bd,
Chestnut Bronze SDL, 7/8" Bead SDL w/Perm Wood Trad'l. Bead Int BAR,
Light Bronze Shadow Bar, Colonial 2 Wide 3 High
BetterVue Mesh Brilliant White Screen,
Product Warranty Covers Accidental* Glass Breakage *Refer to the JELD-
WEN warranty for additional information, *Custom-Height*,
IGThick=0.726(1/8 / 1/8), Clear Opening:14.1w, 38.8h, 3.8 sf
U-Factor: 0.28, SHGC: 0.17, VLT: 0.39, Energy Rating: 15.00, CPD: JEL-N-
877-01878-00002
PEV 2024.2.0.4753/PDV 7.494 (06/06/24)CW

Total:	\$17,483.62
taxes (9.2500%):	\$1,617.23
Net Total:	\$19,100.85
Total Units:	7

 Protect yourself when you choose JELD-WEN AuraLast pine products backed by a limited lifetime warranty against wood rot and termite damage.



Window & Patio Door Limited Warranty

OUR WARRANTY TO YOU...

JELD-WEN® Products¹ are designed to create lasting value for your home. This warranty is effective for all JELD-WEN window and patio door Products (except United Collection products) manufactured on or after **June 1, 2019** for use in the United States and Canada. Any previous warranties will continue to apply to products manufactured by JELD-WEN prior to this date. For additional information, including care and maintenance instructions, installation instructions, and previous warranties, refer to www.jeld-wen.com or www.jeld-wen.ca.

WHAT THIS WARRANTY COVERS

Except as set forth in the Special Coverages section below, we warrant that if your JELD-WEN Product exhibits a defect in material or workmanship within the time periods from the date of manufacture as specified below, we will, at our option, repair, replace or refund the purchase price of the Product or component part. Skilled labor² (where deemed necessary by us) to repair or replace any component is provided as specified below.

	Wood & Metal Clad Wood	Composite	Vinyl & Metal Clad Vinyl	Aluminum
Basic Product Coverage Owner-Occupied Single-Family Residence	20 years	10 years; glass is covered for 20 years	as long as you own and occupy your residence	10 years
Basic Product Coverage Commercial (Other than Owner-Occupied Single-Family Residence)	20 years	10 years	10 years	2 years
Skilled Labor² Coverage	2 years	2 years	2 years	1 year
Transferability - the maximum length of any coverage when you sell your residence or it becomes occupied by other than the original owner	10 years	10 years	10 years	Non-transferable

Special Coverages (Applies to both Owner-Occupied and Commercial)

The following Special Coverages apply to special product features and options; not all options are available on all products or in all regions.

Glass Options	Coverage	Notes
Triple-Glazed Glass Units	20 years	Includes the glass panes and the insulating seal.
ImpactGard® Glass Units	10 years	
Special Glazings	5 years	Includes laminated glass units other than ImpactGard, and glass options not listed in our product literature, e.g., leaded or decorative glass.
Blinds/Shades Between the Glass	10 years	Includes the seal, external control mechanism, and operation of the shade/blind.
Stress Cracks	1 year	Applies to sealed glass units installed in windows and patio doors. Laminated glass and special glazings are excluded. Coverage includes replacement glass and skilled labor ² necessary to replace the glass. Stress cracks occur when, in the first year after manufacture, the glass develops a crack without sign of impact.
Accidental Glass Breakage	Same as the Basic Product Coverage above (Owner-Occupied or Commercial)	Applies to Products ordered with double-strength or thicker glass. Not covered: damage attributable to acts of nature (e.g. fire, hurricane, etc.), civil disorder, building settling, structural failures of walls or foundations or improper installation, construction job-site mishaps, storage, or handling. Special glazings and ImpactGard glass are not covered by this glass breakage warranty.

Continued on next page

Special Coverages (continued)

Finish Options	Coverage	Notes
Finish on Metal Clad Exteriors	AAMA 2605: 30 years AAMA 2603/2604: 10 years Anodized: 5 years	Coverage is for peeling, checking, cracking, or exhibiting excessive chalk, fade or color change ³ . Clad products installed within one mile of a salt-water source (for example, an ocean or salt lake) or other corrosive environment require additional and specific maintenance requirements. Refer to our full care and maintenance instructions.
Factory Interior Finish on Wood Products	1 year	Coverage is for peeling, checking, or cracking. Should the factory interior finish be proven defective within this time period, we will at our option, replace or refinish the component or product, or offer a refinish credit up to \$50 per opening for windows or \$100 per opening for patio doors. This coverage applies to factory-applied finish coat options only; standard factory-applied primer is not a finish coat.
Colored and Laminated Surfaces on Vinyl and Composite Products	10 years	Coverage is for peeling, blistering, or flaking, and excessive color change ³ . This coverage does not extend to discoloration, polish, surface damage, or alteration caused by the use of natural or chemical solvents or an environmental factor causing such damage.
Other Special Coverages	Coverage	Notes
AuraLast [®] Protection for Wood Products	Owner-Occupied Single-Family Residence: as long as you own and occupy your residence	Coverage is for wood decay and/or termite damage in pine wood components. Warranty coverage outside Canada, the contiguous 48 states and Alaska is contingent upon approval from the JELD-WEN Customer Care Department. Please contact us.
	Commercial: 20 years	
Custom Fiberglass Door Slabs	As long as you own and occupy your residence	
Factory Prefinish on Custom Fiberglass Doors	10 years	Should the factory prefinish be proven defective, we will at our option refinish the door or pay up to \$350.00 per opening to the current owner.
Electric Operators	1 year	Coverage includes replacement parts and skilled labor necessary to replace the operator for one year.
Retractable Roll Screens	5 years	

HOW TO GET ASSISTANCE

If you have a problem with your JELD-WEN Product, contact the dealer/distributor or contractor from whom you purchased your product or contact us directly:

	In the United States:	In Eastern Canada:	In Western Canada:	In Ontario Canada:
Mail:	JELD-WEN Customer Care Attn: Warranty Claims P.O. Box 1329 Klamath Falls, OR 97601	JELD-WEN Service Dept 90, rue Industrielle Saint-Apollinaire, Quebec, Canada GOS 2E0	JELD-WEN Service Dept 550 Munroe Avenue Winnipeg, Manitoba, Canada R2K 4H3	JELD-WEN Service Dept 90 Stone Ridge Road Vaughan, Ontario Canada L4H 3G9
Phone:	888-JWHelpU 888-594-3578	800-463-1930	888-945-5627 204-668-8230	800-440-2714 905-265-5700
Fax:	800-436-5954	888-998-1599	204-663-1072	905-265-5704
E-mail:	jeldwenwarranty@jeld-wen.com		wpgservice@jeld-wen.com	
Web:	www.jeld-wen.com/contact-us	www.jeld-wen.ca/contact-us		

We can respond quickly and efficiently if you provide the following: a) product identification (from the original order/invoice, spacer code, permanent label, or the window identification number found on corner of glass), b) how to contact you, c) the address where the product can be inspected, and d) a description of the apparent problem and the product (photographs are helpful).

What We Will Do...

Upon receiving your notification, we will send out an acknowledgement within three business days to the contact, which you have provided. We will investigate your claim and will begin to take appropriate action within 30 days after receipt of notification. If your warranty claim is denied, we may charge an inspection fee for an onsite inspection that is required or requested by you.

Continued on next page

HOW TO GET ASSISTANCE (CONTINUED)

If your claim is approved, and we choose to repair or replace the product or a component of the product, the replacement product/ component will be provided in the same specification as the original product or its nearest equivalent current product. Replacement components/products are warranted for the balance of the original product warranty or 90 days, whichever is longer.

Product Purchase Date: _____
Order Number: _____

If the claimed nonconformity is warp of a door slab, we may defer repairing or replacing the door slab for a period up to twelve (12) months from the date of claim. It is not uncommon for a temporary warp condition to occur as the door slab adjusts to local humidity and temperature conditions. This deferral will not be counted against the warranty period.

WHAT THIS WARRANTY DOES NOT COVER

JELD-WEN is not liable for damage, product failure or poor product performance due to:

- Normal wear and tear, including normal wear and tear of weatherstrip; natural weathering of surfaces. Variance in color or texture of natural wood parts, and natural tarnishing of copper cladding are not considered defects.
- Normal wear and tear to hardware and naturally occurring changes to hardware finishes (e.g., corrosion or tarnishing).
- Exposure to chemicals (e.g. brick wash) or a harsh environment (e.g. salt spray or airborne pollutants) unless otherwise stated above.
- Misuse, abuse or failure to properly finish and provide maintenance.
- Alteration or modification of the Product (e.g. customer applied tints or films, paint finishes, security systems).
- Any cause beyond the reasonable control of JELD-WEN (e.g. fire, flood, earthquake, other acts of nature, and acts of third parties outside of our control).
- Failure to provide an adequate overhang for fiberglass doors; damage caused by extreme temperature buildup where storm doors are present. For general guidelines, see our "Appropriate Protection for Exterior Doors" in our product literature or at www.jeld-wen.com/resources; for specific information pertaining to your structure, consult your contractor or other building professional.
- Improper installation not in conformance with JELD-WEN installation instructions (note: see www.jeld-wen.com for current installation instructions); operational problems and problems related to water and/or air infiltration/leaking as a result of improper installation or flaws in building design or construction.
- Installation into a condition that exceeds product design standards and/or certified performance specifications and/or is not in compliance with building codes.
- Extreme artificial temperature buildup or exposure (e.g., where storm doors/windows are present).
- Hardware or inserts that are not provided by us, such as locksets, door handles, strikes, etc.
- Condensation or damage as a result of condensation (Note: unless due to insulating glass failure, most condensation problems are related to excessive humidity levels in a structure. Contact a heating/air conditioning specialist for help).

- Wood decay in wood components other than of pine species and any components (including pine) that come in direct contact with soil. Note: superficial mold/mildew does not indicate wood decay.

JELD-WEN is also not liable for:

- Glass breakage (except as specifically covered above).
- Screen damage due to normal wear and tear, misuse, abuse, or insect or animal activity.
- Slight expansion or contraction of product components due to varying environmental conditions; slab movement (shrinkage or swelling) of 1/4" or less due to temperature and humidity, consult the Homeowner's Manual on how to work with this natural movement.
- Slight imperfections or wavy distortions in the glass that don't impair structural integrity. Note: wavy distortions in the glass (e.g. related to laminate interlayer or heat strengthening of glass) are not considered a defect. Slight color variations in glass are not considered a defect.
- Hairline cracks in factory-applied finishes; surface cracks that do not compromise the underlying material are not a defect.
- Damage or distortion to other property, including but not limited to, vinyl siding, building components or landscaping caused in whole or in part by reflection of light or heat from JELD-WEN windows or doors.
- Product or component performance decline due to aging, inert gas dissipation, natural processes or failure to provide proper maintenance. Note: Other than inert gas loss due to seal failure, the migration of an inert gas, such as argon, is a natural process that occurs over time and is not a defect.
- Repairs on product not accessible by road; travel costs related to repairs on product located more than 125 miles/200 kilometers from an authorized dealer; providing, assembling, or dismantling scaffolding, lifts, or other specialized equipment.
- Labor and materials for repainting or refinishing activities or the removal or disposal of defective product(s); labor exceeding the time periods specified above.
- Incidental or consequential damage. Some states/provinces do not allow the exclusion or limitation of incidental or consequential damages, so this may not apply to you.

Continued on next page

Important Legal Information -- Please read this carefully. It affects your rights.

This Limited Warranty document sets forth our maximum liability for our products. We shall not be liable for special, indirect, consequential, or incidental damages. Your sole and exclusive remedy with respect to any and all losses or damages resulting from any cause whatsoever shall be as specified above. We make no other warranty or guarantee, either express or implied, including implied warranties of merchantability and fitness for a particular purpose to the original purchaser or to any subsequent user of the Product, except as expressly contained herein. In the event state or provincial law precludes exclusion or limitation of implied warranties, the duration of any such warranties shall be no longer than, and the time and manner of presenting any claim thereon shall be the same as, that provided in the express warranty stated herein. This Limited Warranty document gives you specific legal rights, and you may have other rights that vary from state/province to state/province.

Any dispute, controversy or claim arising out of or relating to this warranty, any alleged breach thereof, or the use or sale of the products to which this warranty applies shall be resolved by mandatory and binding arbitration administered by the American Arbitration Association in accordance with its commercial arbitration rules. Any ensuing arbitration will be venued in Charlotte, North Carolina. Original purchaser agrees that they may assert claims against JELD-WEN in their individual capacity only, and not as a plaintiff or class member in any purported class action proceeding. This warranty shall be interpreted in accordance with the laws of North Carolina (excluding North Carolina's conflict of laws principles). If any provision of this warranty is deemed illegal or unenforceable in a judicial proceeding, that provision shall be severed and excluded, and the remainder of this warranty shall continue in force. Rejection of these dispute resolution provisions must be sent to JELD-WEN at the address provided herein within thirty (30) days of original purchaser's receipt of the Products to which this warranty applies.

No distributor, dealer or representative of JELD-WEN has the authority to change, modify or expand this warranty. The original purchaser of this Product acknowledges that they have read this warranty, understand it and are bound by its terms and agrees to provide this warranty to the original owner of the structure into which the Product is installed.

¹ "JELD-WEN Products" shall refer to window and patio door products (except United Collection products) manufactured in the United States and/or Canada and marketed under the JELD-WEN brand name for use in the United States and/or Canada. See our separate United Collection warranty, or our Export Warranty for applicable coverage on products used outside the United States and Canada.

² "Skilled labor" refers to tasks where specialized technical knowledge, experience, methods or tools are required to properly identify, diagnose and/or correct product-related issues.

³ "Chalking" of the exterior finish is not a defect unless it exceeds a numerical rating of eight (8) when measured in accordance with the standard procedures specified in ASTM D4214. Fading or changing in color of the exterior finish is not a defect unless it exceeds five (5) E units, calculated in accordance with ASTM D2244, paragraph 6.2. Color change shall be measured on an exposed area of finish that has been cleaned of surface soils and chalk, and the corresponding values measured on the original or unexposed area of finish. Fading or color changes may not be uniform if the surfaces are not equally exposed to the sun and elements. If the above ASTM standards change, the standard in effect at the time of purchase applies. As an option to replacement, we may choose to refinish the product.

© 2019 JELD-WEN, inc. | JELD-WEN, AuraLast, and ImpactGard are registered trademarks of JELD-WEN, inc.