



LOS ANGELES, CALIFORNIA

designcollaborate.com
info@designcollaborate.com
213 663 2017

PLAYHOUSE EXTERIOR IMPROVEMENTS
SUBMITTAL TO THE CITY OF CARMEL-BY-THE-SEA PLANNING DEPARTMENT

PROJECT:
GOLDEN BOUGH PLAYHOUSE
LOCATED BETWEEN 8TH AND 9TH AVE OFF MONTE VERDE
CARMEL BY THE SEA, CA 93921

CLIENT:
PACIFIC REPERTORY THEATRE
PO BOX 222035
CARMEL, CA 93922

ISSUANCE DATE
30 JANUARY 2024
REVISED 23 FEBRUARY 2024

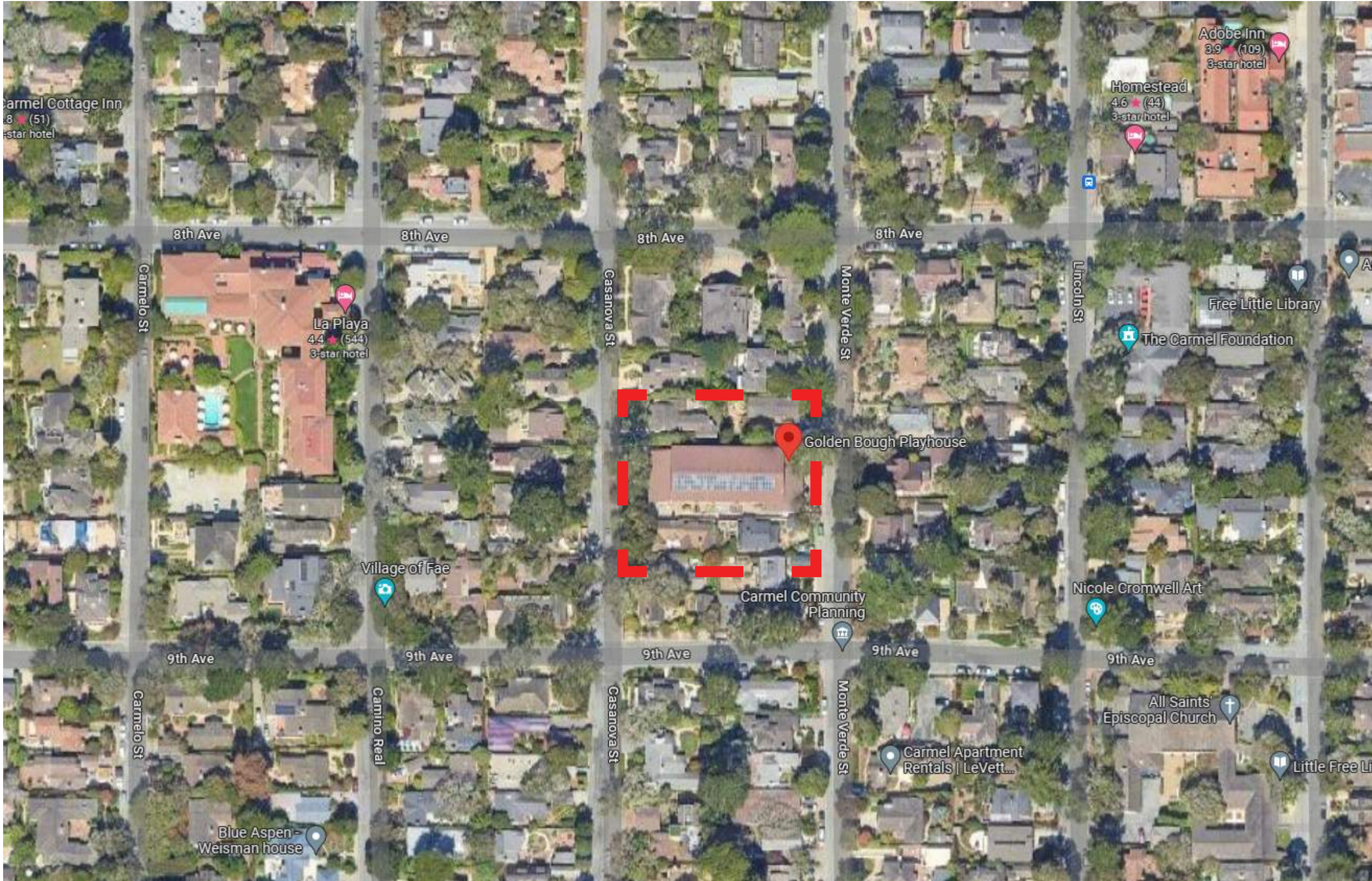
PROJECT NO
22028.00

PROPOSED CHANGES NARRATIVE
The Golden Bough Theatre is presently undergoing renovations in compliance with the City of Carmel-By-The-Sea permit number BP21-184. The permit, sanctioned under the 2019 California Building Code, mandates the incorporation of exterior pathways for accessible egress, facilitating entry and exit from the theatre building. As a condition of approval, the city necessitates the installation of new egress ramps and pathways on the north, south, and east sides of the building, aligned with the permitted entrances and exits. This submission to the planning department focuses on the approval of these exterior egress pathways during the ongoing construction.

The enclosed drawings illustrate the new ramps essential for accessible egress into the theatre at the east entry and for exiting on the north and south sides of the building. The primary ramp at the east entry requires the removal of the planter on the northeast corner, the planter at the center of the east side, and repositioning the marquee sign to the south to accommodate the accessible ramp slope and landings. New elevated ramps are introduced on the north and south sides to align with the new exit doors for the theatre. On the south side, the exit ramp extends over a new mechanical room situated below. The new north and south side ramping mirrors the footprint of the existing ramps and paving being replaced. To offset the loss of planters and permeable surfaces, new permeable pavers will be added, resulting in a net increase of approximately 50% in permeable/semi-permeable surfaces on-site.

Furthermore, the arts and craft light fixtures on bronze poles at the front of the theatre will be retained, and the fixtures will be replaced with a new design matching the original arts and craft fixture (see attached for the proposed design). The temporary fence atop the existing wall will be substituted with a new steel picket fence, painted to emulate wrought iron in the arts and craft style, consistent with other steel picket fences along Monte Verde Street. This fence, mandated by our permit, will function as a guardrail for the new accessible ramp and the existing change in elevation.

The final modification entails extending the northeast corner of the building to align with the existing shed roof. This expansion is intended to accommodate the enlargement of the restrooms. The design of this extension mirrors the box office extension on the southeast corner, which was completed in 2011 and 2018.



MAP



VIEW FROM MONTE VERDE ST.



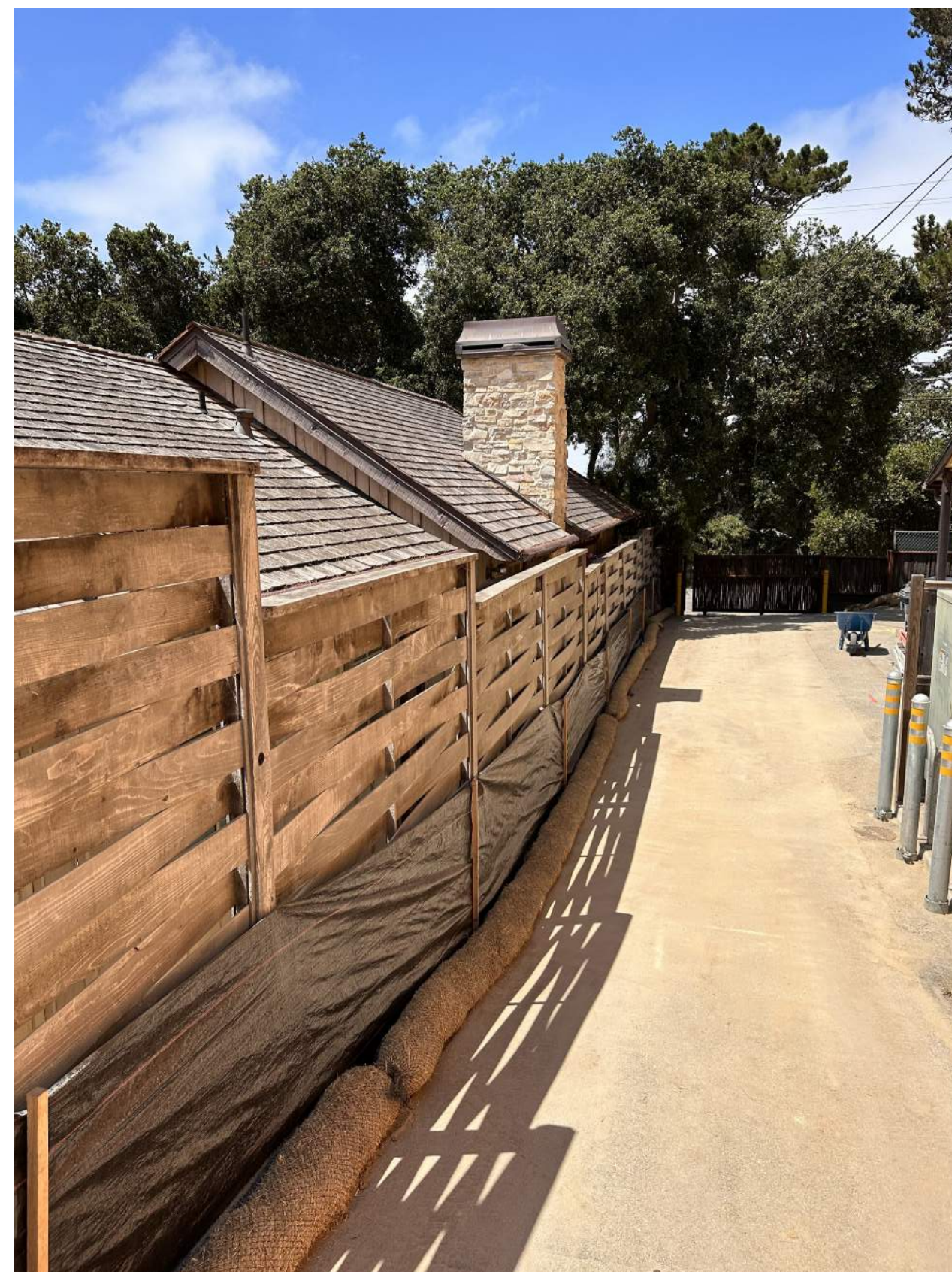
EXISTING FRONT ENTRY



VIEW FROM CASANOVA ST.



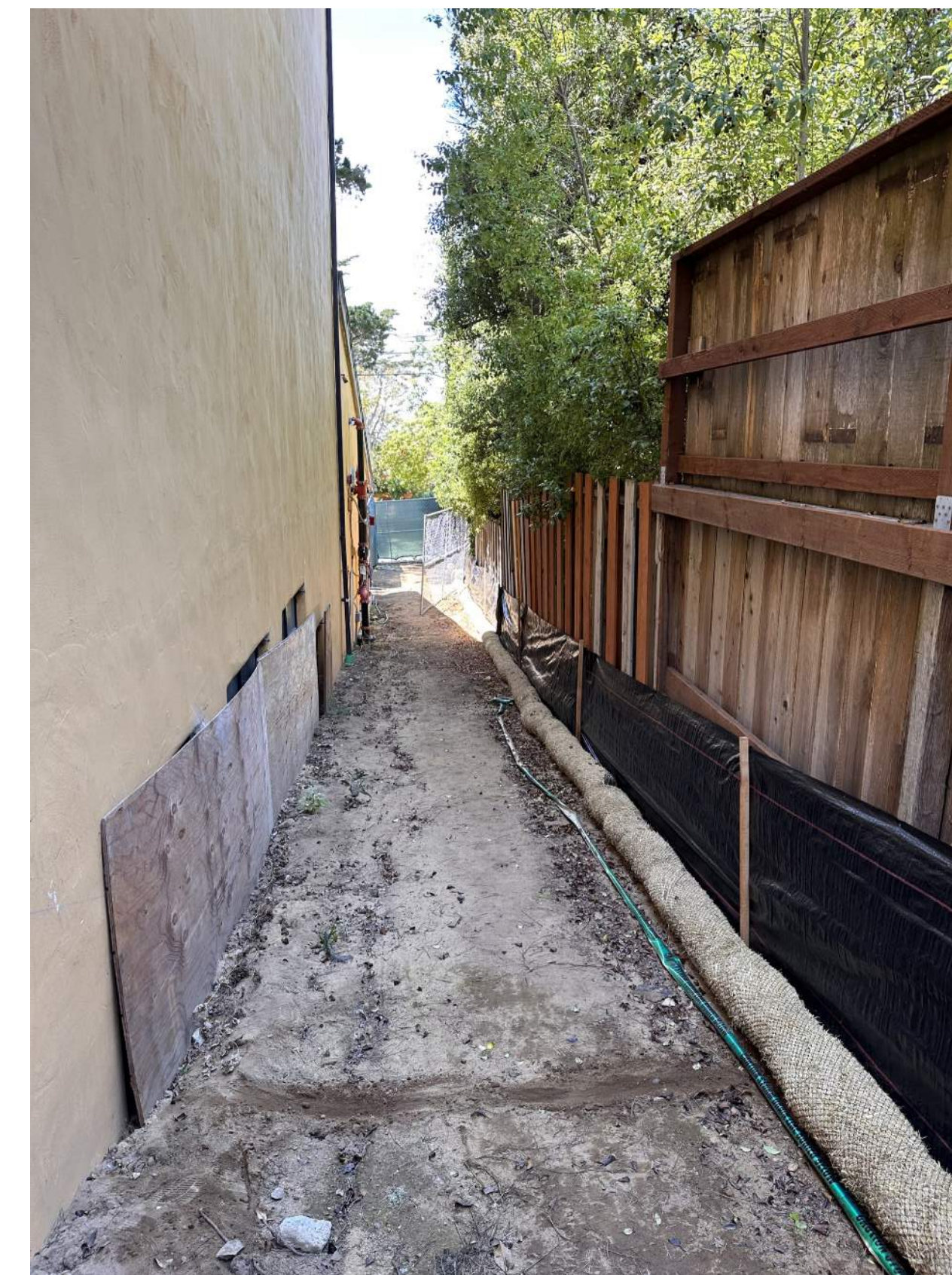
EXISTING SOUTH WALKWAY



EXISTING SOUTH WALKWAY



EXISTING NORTH WALKWAY



EXISTING NORTH WALKWAY



EXISTING GATE ON CASANOVA ST. SIDE



EXISTING ENTRY



EXISTING EXTERIOR LIGHT FIXTURES ON MONTE VERDE ST.



EXISTING EXTERIOR LIGHT FIXTURES ON MONTE VERDE ST.



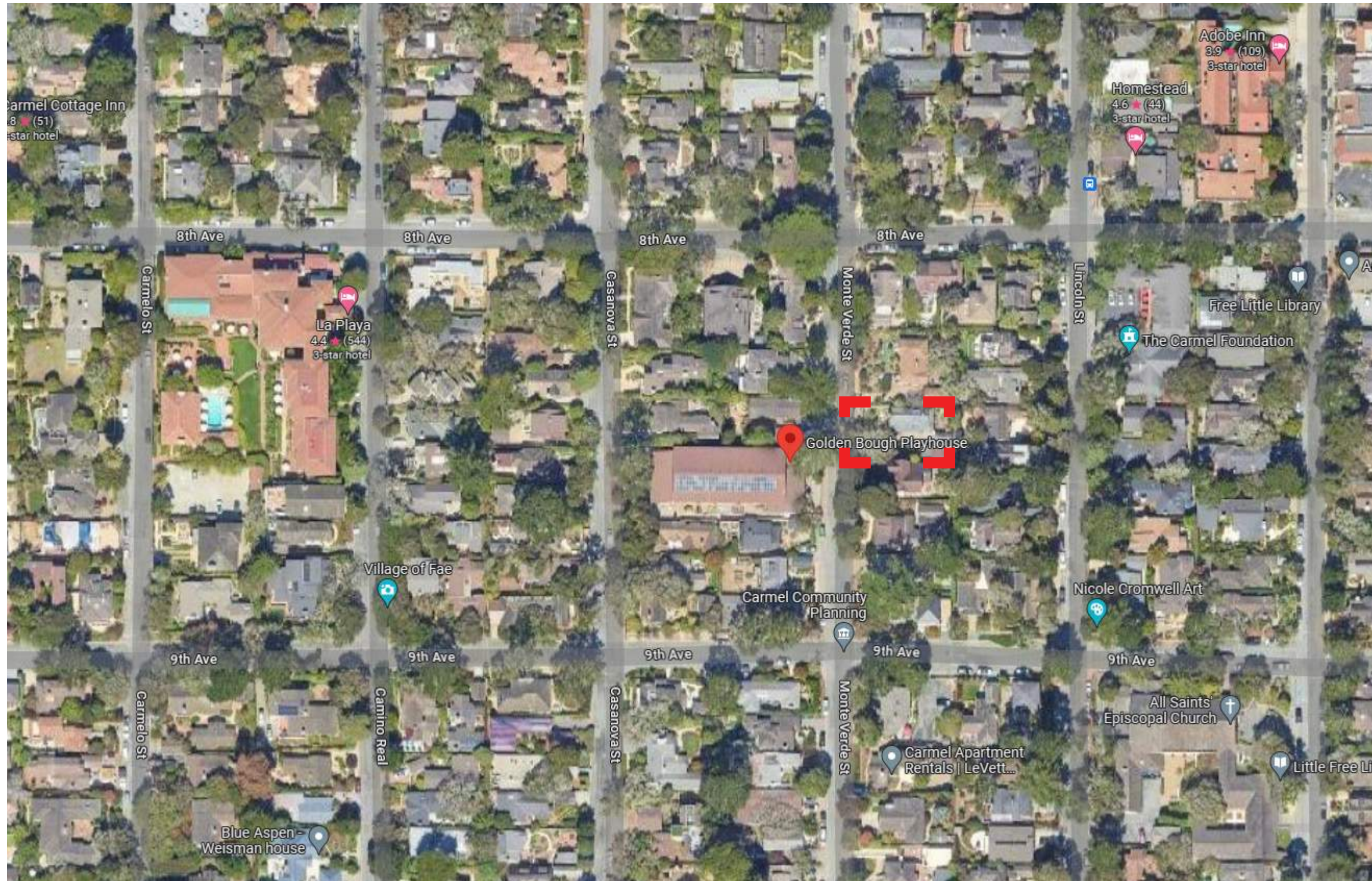
EXISTING EXTERIOR LIGHT FIXTURES ON MONTE VERDE ST.



EXISTING EXTERIOR LIGHT FIXTURES ON MONTE VERDE ST.



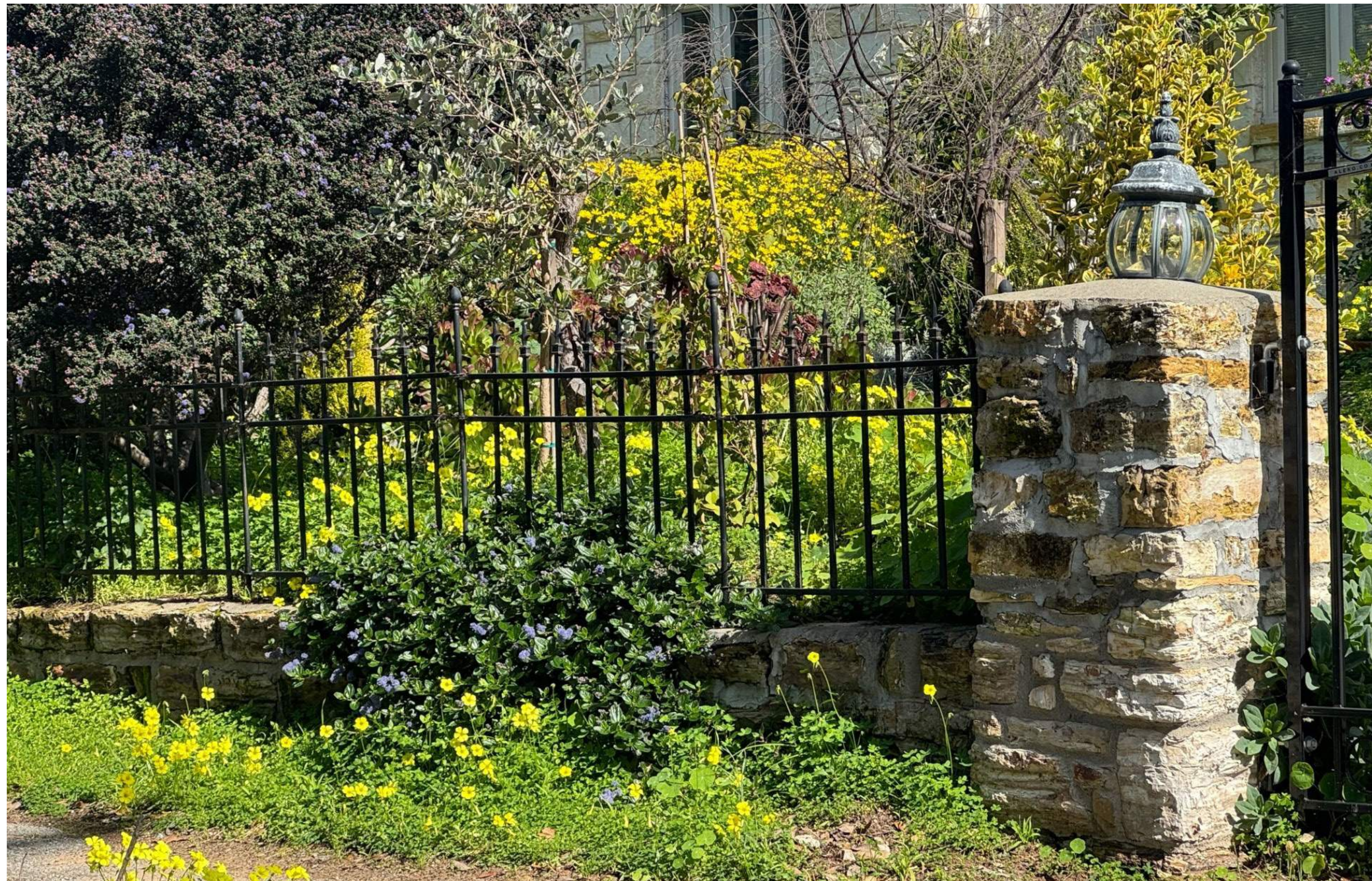
PROPOSED NEW EXTERIOR LIGHT FIXTURES ON MONTE VERDE ST.



MAP



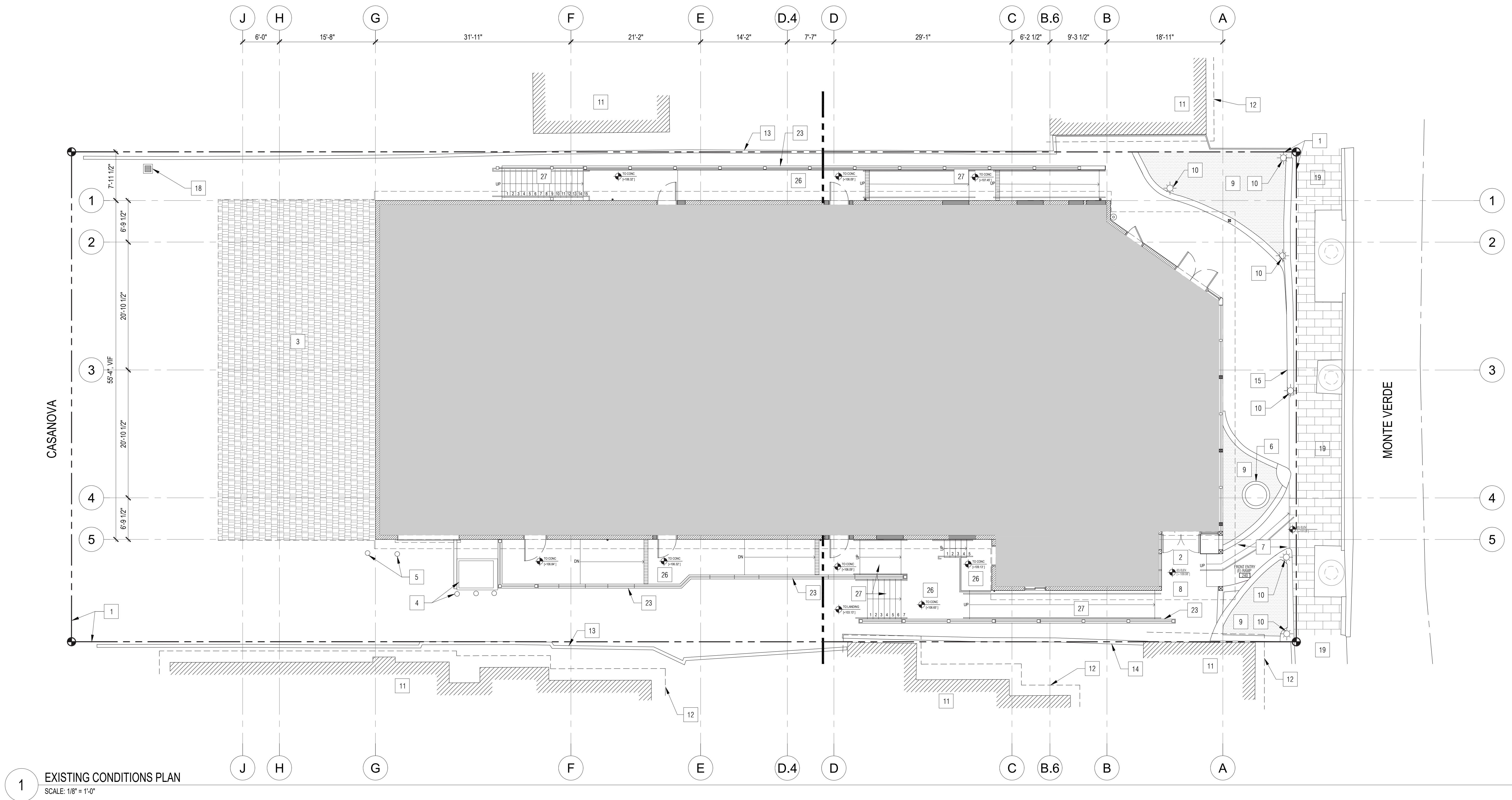
NEIGHBOR WITH DECORATIVE METAL FENCE ON MONTE VERDE ST.



NEIGHBOR WITH DECORATIVE METAL FENCE ON MONTE VERDE ST.



NEIGHBOR WITH DECORATIVE METAL FENCE ON MONTE VERDE ST.



FLOOR PLAN NOTES

1. GRADE AND SITE SHALL BE DEVELOPED SO THAT ACCESSIBLE ROUTES OF TRAVEL ARE PROVIDED FROM ACCESSIBLE ENTRANCE OR EGRESS OF THE PROJECT TO PUBLIC STREET OR SIDEWALK.
2. FINISH GRADE AROUND THE STRUCTURE/ADDITION SHALL SLOPE A MINIMUM OF 1% AWAY FROM THE STRUCTURE FOR A HORIZONTAL DISTANCE OF AT LEAST 5'-FEET BE ESTABLISHED IN AREAS CONTAINING HARDSCAPE. DRAINAGE SHOULD NOT BE ALLOWED TO POND ON THE SITE OR ADJACENT TO ANY FOUNDATION, AND SHOULD BE DIRECTED TOWARDS APPROPRIATE DISCHARGE POINTS. REFER TO SOILS REPORT.
3. WATER SHALL BE DIRECTED TO THE STREET WITH A 2% MIN. SLOPE.

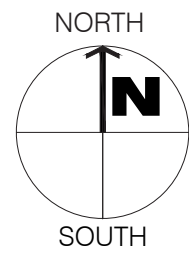
KEY NOTES

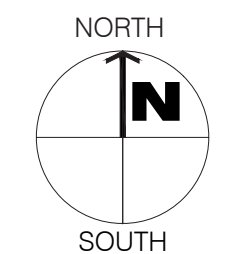
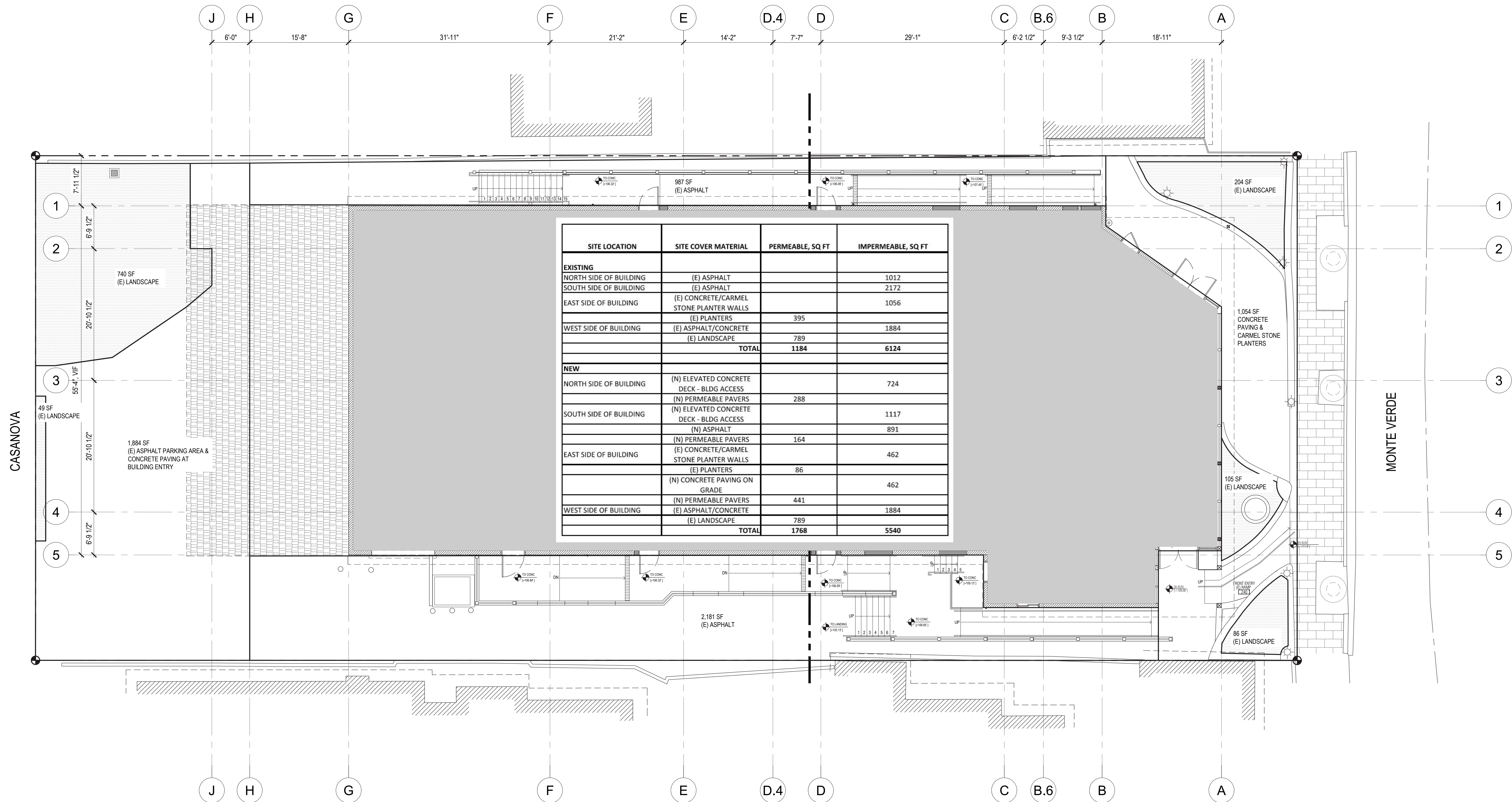
- | | |
|----|------------------------------------------|
| 1 | PROPERTY LINE |
| 2 | (E) ENTRANCE TO THEATER |
| 3 | (E) ROOF CONSTRUCTION TO REMAIN |
| 4 | (E) TRANSFORMER PAD & BOLLARDS TO REMAIN |
| 5 | (E) GAS METER & BOLLARDS TO REMAIN |
| 6 | (E) MARQUEE SIGNAGE TO REMAIN |
| 7 | (E) RAMP TO REMAIN |
| 8 | (E) HARDSCAPE TO REMAIN |
| 9 | (E) PLANTER |
| 10 | (E) DECORATIVE LANTERN, LIGHT FIXTURE |

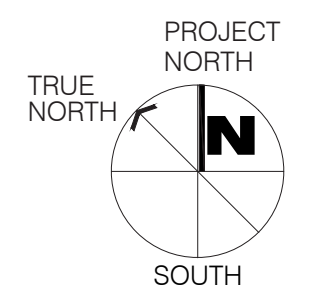
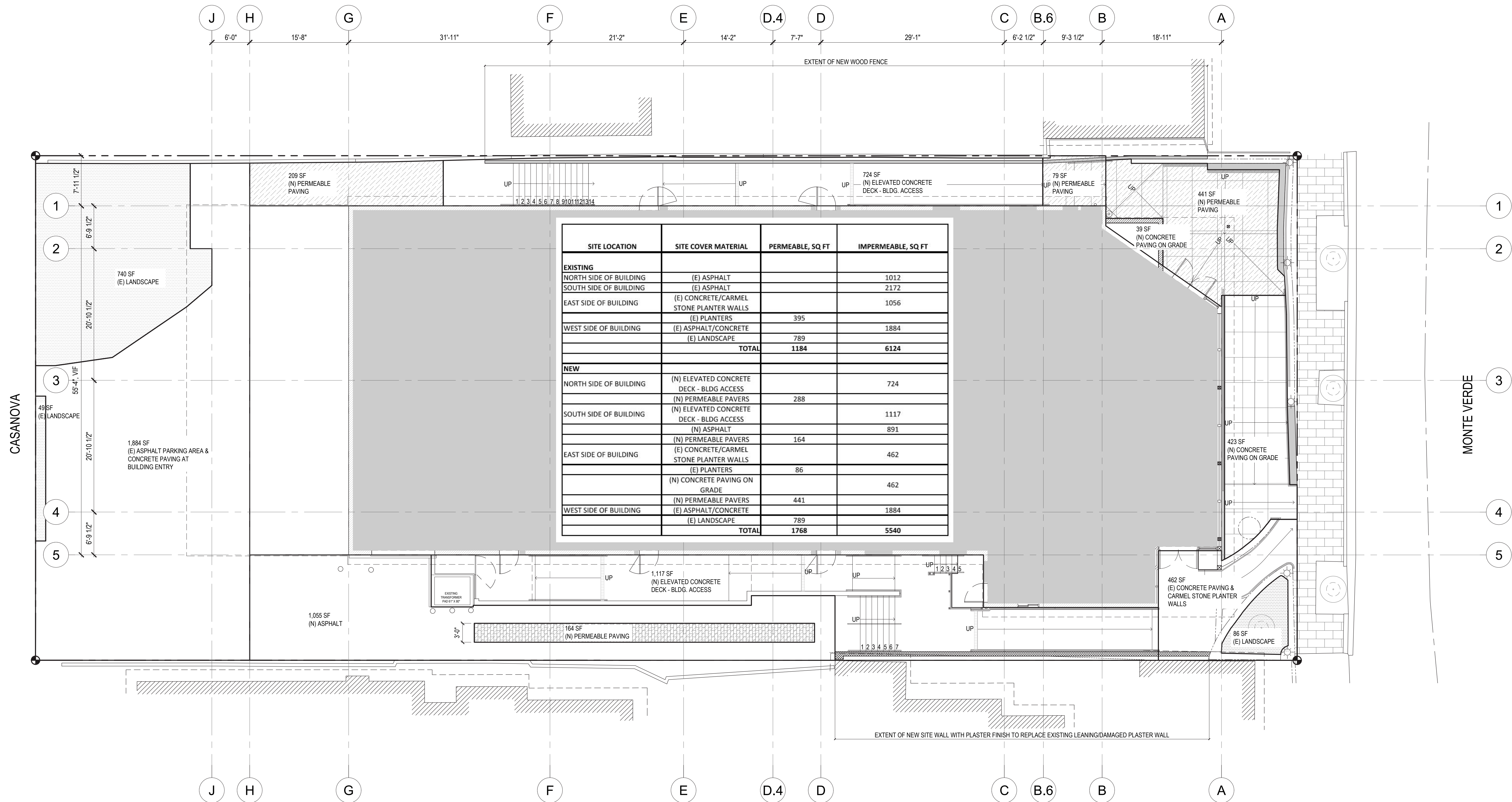
- | | |
|----|--------------------------------------------------------|
| 11 | (E) STRUCTURE ON ADJACENT PROPERTY |
| 12 | OUTLINE OF (E) OVERHANG ON ADJACENT PROPERTY |
| 13 | (E) FENCE ON ADJACENT PROPERTY |
| 14 | (E) STUCCO WALL |
| 15 | LINE OF (E) PARTIAL HEIGHT WALL W/ CARMEL STONE FINISH |
| 16 | NOT USED |
| 17 | NOT USED |
| 18 | (E) DRAIN BOX, REFER TO CIVIL |
| 19 | PUBLIC RIGHT-OF-WAY (NOT IN SCOPE) |
| 20 | NOT USED |

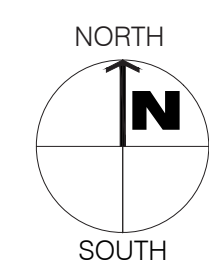
- | | |
|----|-----------------------------------------------------------------------------------------|
| 21 | NOT USED |
| 22 | NOT USED |
| 23 | APPROVED RAILING & CONSTRUCTION TO BE REDESIGNED, REFER TO A100 |
| 24 | NOT USED |
| 25 | NOT USED |
| 26 | APPROVED DECK W/ DEX-O-TEX TRAFFIC COATING FINISH TO BE REDESIGNED, REFER TO A100 |
| 27 | APPROVED STAIR/RAMP W/ DEX-O-TEX TRAFFIC COATING FINISH TO BE REDESIGNED, REFER TO A100 |
| 28 | NOT USED |
| 29 | NOT USED |
| 30 | NOT USED |

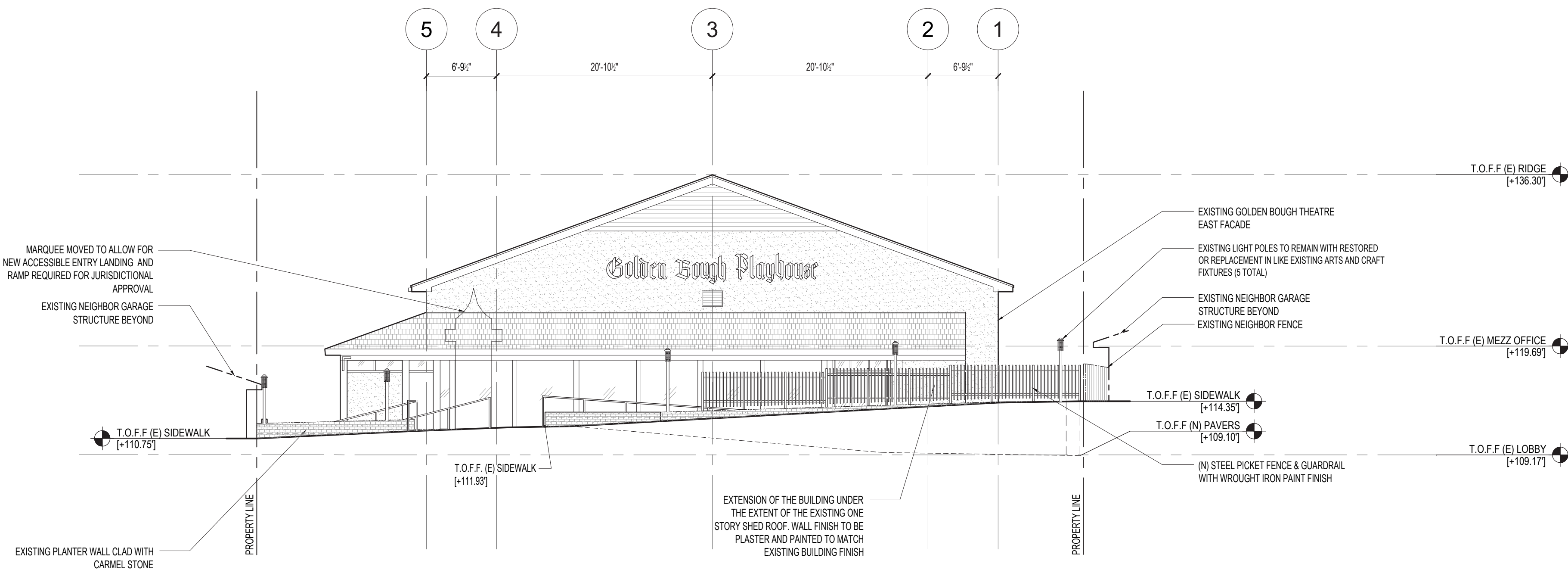
- | | |
|----|---------------------------------------------------------------------------------------|
| 31 | REMOVE (E) CARMEL STONE FINISH PARTIAL HT WALL & REPLACE WITH (N) TO MATCH (E) FINISH |
|----|---------------------------------------------------------------------------------------|



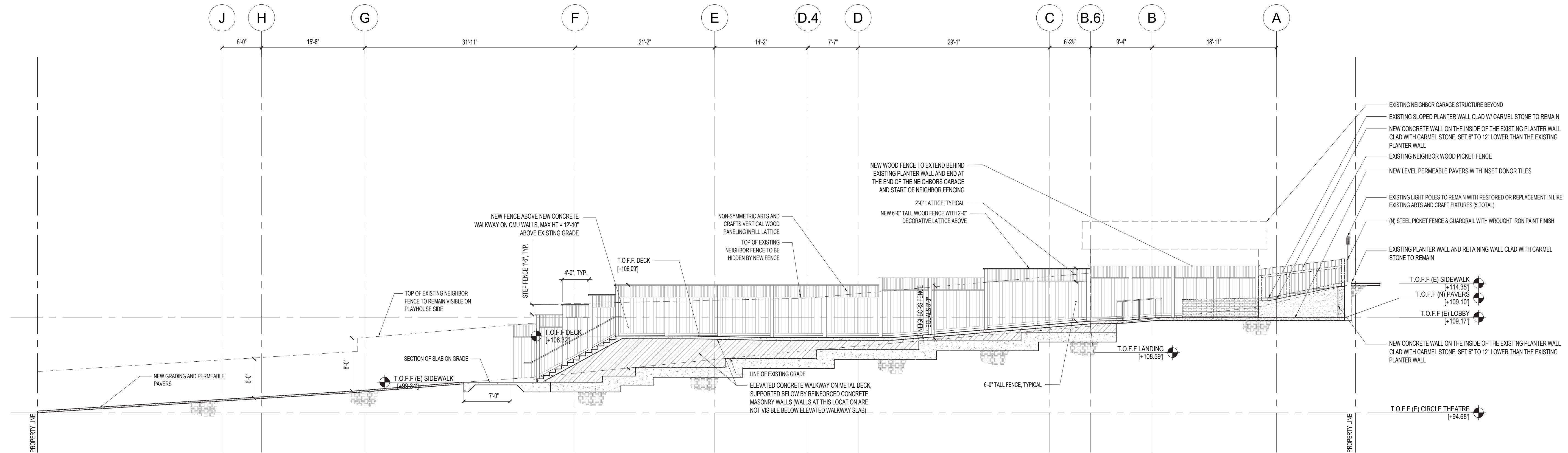




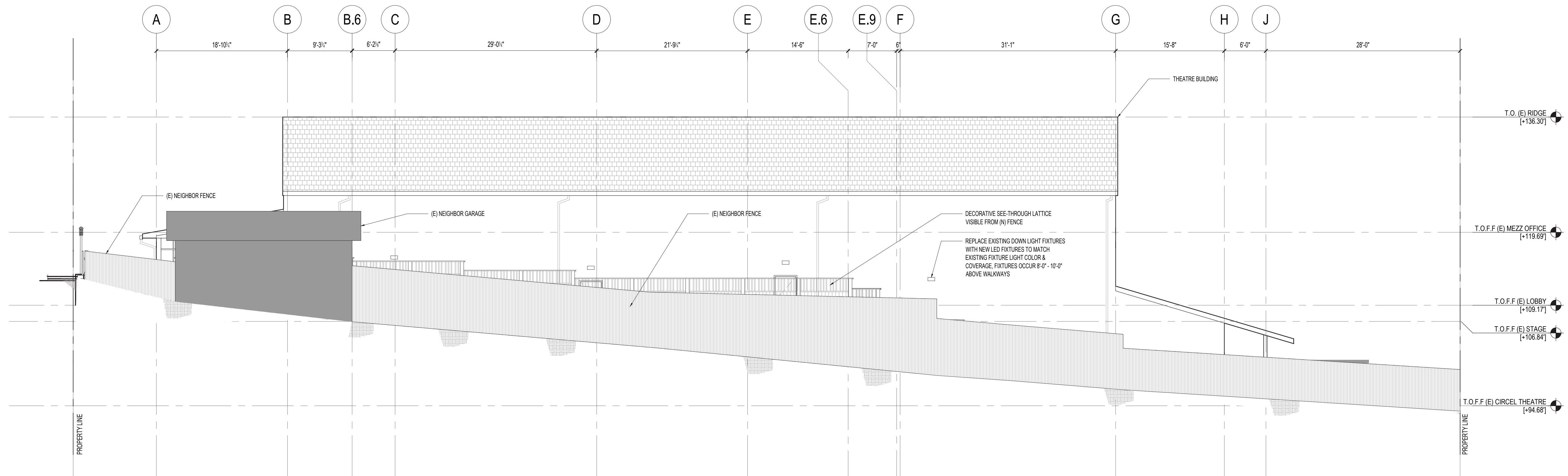




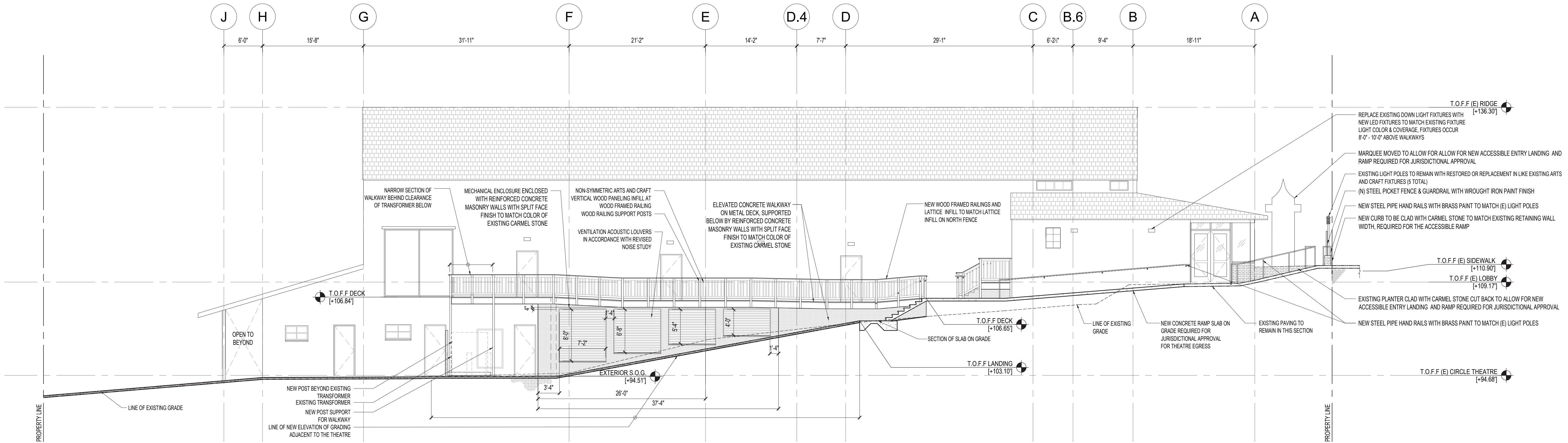
A
EXTERIOR ELEVATION LOOKING EAST - PROPOSED EAST ENTRY
SCALE: 1/8" = 1'-0"



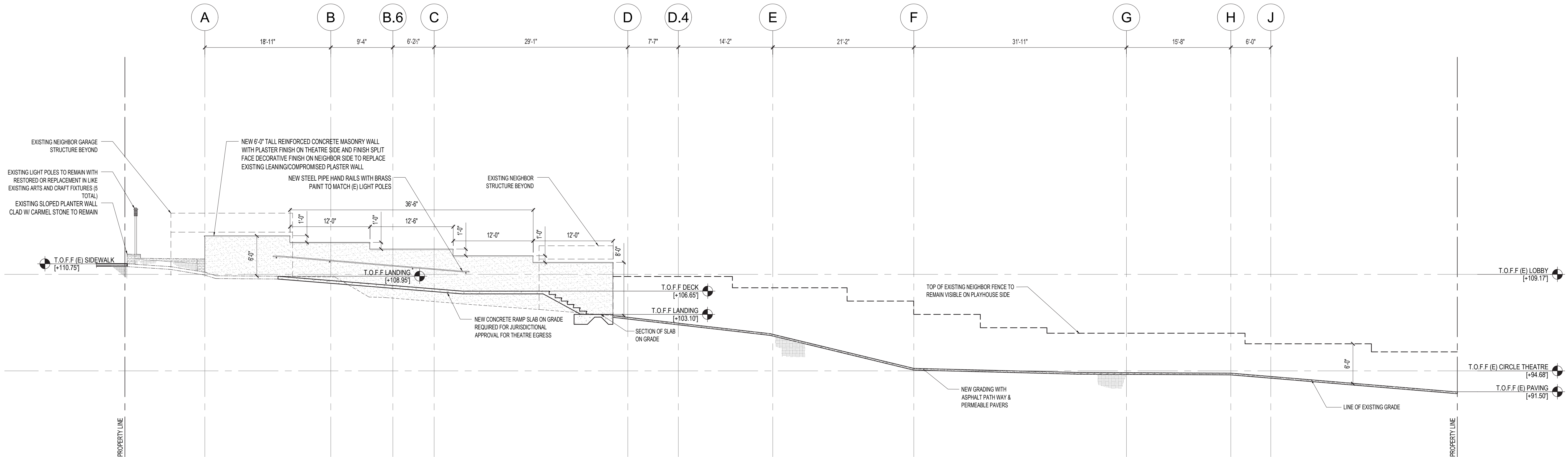
B EXTERIOR ELEVATION LOOKING NORTH - PROPOSED NORTH WALKWAY
SCALE: 1/8" = 1'-0"



C EXTERIOR ELEVATION LOOKING SOUTH - NEIGHBOR VIEW
SCALE: 1/8" = 1'-0"



D EXTERIOR ELEVATION LOOKING NORTH - PROPOSED SOUTH WALKWAY
SCALE: 1/8" = 1'-0"



E EXTERIOR ELEVATION LOOKING SOUTH - PROPOSED SOUTH WALKWAY
SCALE: 1/8" = 1'-0"

Outdoor Post Light Clear Glass Shade Pole Lantern
Pillar Light Fixture Black Finish

See More by [Red Barrel Studio®](#)

★★★★★ 5.0 [3 Reviews](#)

\$84.99



Product Overview



Product Warranty



Standard 3" Diameter Post Fitting: Yes



Power Source: Hardwired



Wet Location (Direct Water Exposure)



Dimmable

Long-Lasting Protective Finish

Description

This outdoor post light features a metal frame with a clear glass shade in a black finish, creating a farmhouse and vintage look in your house, which can scatter bright light over the whole patio or lawn.

Features

- Hard wired. UL listed. All mounting hardware is included for quick installation.
- Fits 3.2" mounting base (sold separately), post or pole mount
- Hard wired. This exterior pole lamp includes all mounting hardware for quick and easy installation.
- If you have any quality or skill problems like the glass shade being broken/replacement parts/installation problems, just feel free to contact us for easy and fast customer service.

Weights & Dimensions

Specifications

Features

Product Type	Lantern Head
Power Source	Hardwired
Powder Coated Finish	Yes
Fixture Material	Metal
Metal Type	Aluminum
Lantern Shape	Square/Rectangle; Birdcage
Number of Lantern Heads	1
Voltage	120 Volt
Maximum Wattage (Per Bulb)	60 Watt
Integrated LED	No
Bulb Not Included But Required	Yes
Recommended Bulb Shape	Standard
Bulb Base	E26/Medium (Standard)
Number of Light Bulbs Required	1
Dry, Damp or Wet Location Listed	Wet
What is Dry, Damp or Wet Location Listed?	This indicates whether the fixture is safe to use in dry locations, damp locations (moist environments), or wet locations (direct exposure to water).
Weatherproof	Yes
Marine Grade	Yes
Dimmable	Yes
Dusk to Dawn	No
Glass Type	Transparent
Plug-In	No
Supplier Intended and Approved Use	Non Residential Use; Residential Use
Shade Included	Yes
Imported	Yes
Durability	Rust Resistant; Weather Resistant; UV Resistant

Specifications

Safety Listing(s)	UL Listed
-------------------	-----------

<https://www.wayfair.com/lighting/pdp/red-barrel-studio-outdoor-post-light-clear-glass-shade-pole-lantern-pillar-light-fixture-black-finish-w008213658.html?piid=>

LNC3

MEDIUM LED LITEPAK

FEATURES

- Litepak LNC3 is a mid-sized wallpack in the popular Litepak series
- The LNC3 features luminaires with TIR optics and four different lumen packages, multiple distributions and CCT for maximum light level and mounting height flexibility
- Capable of replacing up to 250w HID solutions at over 70% energy savings
- Energy efficient LEDs provide 70%+ energy savings with little to no maintenance when compared to traditional light sources
- Typical mounting heights of 8-20"



CONTROL TECHNOLOGY



SPECIFICATIONS

CONSTRUCTION

- Die-cast aluminum housing protects components and provides an architectural appearance
- Casting thermally conducts LED heat to optimize performance and long life
- Powder paint finish provides durability in outdoor environments
- Four 1/2" conduit entries (top, bottom, and sides) provided for surface conduit
- Zero uplight distributions using individual acrylic LED optics provide IES type II, III and IV distributions
- CS - Frosted acrylic diffuser option for reduced glare
- CSU - Frosted acrylic diffuser for inverted "up" mounting applications (lens required)

OPTICS

- Ambient operating temperature -40°C to 40°C
- 3000K, 4000K and 5000K CCT nominal with 70 CRI
- Available in 4 or 24 LED configuration
- L70 at 60,000 hrs (Projected per IESNA TM-21-11), see table on page 3 for all values

INSTALLATION

- Quick-mount adapter with gasket seal provides easy installation to wall or to recessed junction box (4" square junction box)

INSTALLATION (CONTINUED)

- Fixture attaches by two Allen-head hidden fasteners for tamper resistance
- Designed for direct j-box mount or conduit feed on all four sides in single SKU

ELECTRICAL

- 120-277, 347 and 480 voltage, 50/60Hz, 0-10V dimming drivers
- Electronic driver
- 10kA surge protection

CONTROLS

- Button photocontrol for dusk to dawn energy savings
- 7-pin photo-receptacle available for twist lock photocell and controls by others
- Occupancy sensor options available for complete on/off and dimming control
- SiteSync pre-commissioned wireless controls (with or without sensor)
- In addition, LITEPAK can be specified with SiteSync™ wireless control system for reduction in energy and maintenance cost while optimizing light quality 24/7
- See ordering information or visit www.hubbelllighting.com/sitesync for more details



RELATED PRODUCTS

θ [LNC](#)

θ [INC2](#)

θ [LNC4](#)

CERTIFICATIONS

- DLC® DesignLights Consortium Qualified, with some Premium Qualified configurations. Please refer to the DLC website for specific product qualifications at www.designlights.org
- Listed to UL1598 and CSAC22.2#250.0-24 for wet locations
- Listed to UL1598 and CSAC22.2#250.0-24 for wet locations
- IP65 Assembly
- IDA Approved (3000K configurations)

WARRANTY

- 5 year limited warranty
- See [HLI Standard Warranty](#) for additional information

KEY DATA	
Lumen Range	2,991–7,603
Wattage Range	28–83
Efficacy Range (LPW)	84–115
Fixture Projected Life (Hours)	L70>60K
Weights lbs. (kg)	18.0 (8.2)

LNC3

MEDIUM LED LITEPAK

ORDERING GUIDE

Example: LNC3-24L-3K-035-2-U-DBT-PCU

CATALOG #

ORDERING INFORMATION

Series	# LEDs	CCT/CRI	Drive Current	IES Distribution	Voltage
LNC3 Medium Litepak Wallpack	24L 24LEDs	3K 3000K nominal, 70 CRI 4K 4000K nominal, 70 CRI 5K 5000K nominal, 70 CRI	035 350mA 050 500mA 075 750mA 105 1050mA	2 Type II ¹ 3 Type III ¹ 4 Type IV ¹	U 120-277V 1 120V ¹ 2 208V ¹ 3 240V ¹ 4 277V ¹ 5 480V ¹ F 347V ¹

Finish	Control Options	Options	Notes:
BLT Black Matte Textured BLS Black Gloss Smooth DBT Dark Bronze Matte Textured DBS Dark Brone Gloss Smooth GTT Graphite Matte Textured LGS Light Grey Gloss Smooth PSS Platinum Silver Smooth WHT White Matte Textured WHS White Gloss Smooth VGT Verde Green Textured	PCU Universal Button Photocontrol 7PR 7pin PCR ⁶ SCP Programmable occupancy sensor ^{3,4} SWP SiteSync Pre-Commission ^{7,10} SWPM SiteSync Pre-commission w/ OCC Sensor ^{4,7,8,10}	F Fusing (must specify voltage per footnote) CS Frosted acrylic diffuser CSU Inverted/Up mounting frosted acrylic diffuser (required for up/inverted fixture installations, factory install only see page 3) ² E Integral battery backup rated for 0°C ^{1,5} EH Integral battery backup with heater rated for -30°C ^{1,5} 2DR Dual Driver ⁹	1 Must specify voltage (120 or 277 only for E & EH) 2 Factory install only. Not available with SCP or SWPM sensor/control options 3 Must order minimum of one remote control to program dimming settings, 0-10V fully adjustable dimming with automatic daylight calibration and different time delay settings, 120-277V only 4 PCU option not applicable, included in sensor (8F = up to 8ft, 20F = up to 20ft) 5 350mA, 500mA & 750mA versions only. Not available with F, SWP or SWPM options 6 Accepts standard 3, 5, and 7-Pin ANSI controls (by others). Not available with PCU, SWP or SWPM control options 7 Must specify group and zone information at time or order. See www.HubbellLighting.com/products/sitesync for future details 8 Specify time delay; dimming level and mounting height 9 750mA and 1050mA versions only, not available with 347/480V 10 1050mA only, not available with 347V or 480V
Color Option CC Custom Color			

ACCESSORIES AND SERVICES (ORDERED SEPARATELY)

Catalog Number	Description
<input type="checkbox"/> LNC3-CS	Frosted acrylic comfort shield/lens, reduces glare and improves uniformity with only 20% lumen reduction
<input type="checkbox"/> SCP-Remote	Remote Control for SCP/_F option. Order at least one per project to program and control the occupancy sensor
<input type="checkbox"/> SWUSB	SiteSync interface software loaded on USB flash drive for use with owner supplied PC (Windows based only). Includes SiteSync license, software and USB radio bridge node*
<input type="checkbox"/> SWTAB	Windows tablet and SiteSync interface software. Includes tablet with preloaded software, SiteSync license and USB radio bridge node*
<input type="checkbox"/> SWBRG	SiteSync USB radio bridge node only. Order if a replacement is required or if an extra bridge node is requested
<input type="checkbox"/> SW7PR	SiteSync 7 Pin on fixture module On/Off/Dim, Daylight Sensor 120-480VAC*

Notes:

* When ordering SiteSync at least one of these two interface options must be ordered per project

+ Available as a SiteSync retrofit solution for fixtures with an existing 7pin receptacle

Hubbell Control Solutions — Accessories (Sold Separately)

NX Distributed Intelligence™

☐ NXOFM-1R1D-UNV On-fixture Module (7-pin), On / Off / Dim, Daylight Sensor with HubbNET Radio and Bluetooth® Radio, 120–480VAC

wiSCAPE® Lighting Control

☐ WIR-RME-L On-fixture Module (7-pin or 5-pin), On / Off / Dim, Daylight Sensor with wiSCAPE Radio, 110–480VAC

For additional information related to these accessories please visit www.hubbellcontrolsolutions.com. Options provided for use with integrated sensor, please view specification sheet ordering information table for details.

LNC3

MEDIUM LED LITEPAK

CONTROLS

SiteSync — Precommissioned Ordering Information:

When ordering a fixture with the SiteSync lighting control option, additional information will be required to complete the order. The SiteSync Commissioning Form or alternate schedule information must be completed. This form includes Project location, Group information, and Operating schedules. For more detailed information please visit [the SiteSync family page on our website](#) or contact Hubbell Lighting tech support at 800-345-4928.



SiteSync fixtures with Motion control (SWPM) require the mounting height of the fixture for selection of the lens.

Examples: LNC3-24L-4K-075-3-U-BL-SWP

LNC3-24L-4K-075-3-U-BL-SWPM-20F

SiteSync only

SiteSync with Motion Control

SiteSync 7-Pin Module:

- SiteSync features in a new form
- Available as an accessory for new construction or retrofit applications (with existing 7-Pin receptacle)
- Does not interface with occupancy sensors



SW7PR

PERFORMANCE DATA

# Of LEDs	Nominal Wattage	System Watts	Dist. Type	5K (5000K NOMINAL 70 CRI)					4K (4000K NOMINAL 70 CRI)					3K (3000K NOMINAL 80 CRI)				
				Lumens	LPW*	B	U	G	Lumens	LPW*	B	U	G	Lumens	LPW*	B	U	G
4	N/A	N/A	E	671	-	-	-	-	657	-	-	-	-	591	-	-	-	-
24	350mA	28	2	3,212	115	1	0	1	3,145	113	1	0	1	2,991	107	1	0	1
			3	3,160	113	1	0	1	3,094	111	1	0	1	2,944	106	1	0	1
			4	3,182	114	1	0	1	3,116	112	1	0	1	2,964	106	1	0	1
	500mA	41	2	4,143	101	1	0	2	4,057	99	1	0	2	3,858	94	1	0	2
			3	4,076	99	1	0	1	3,991	97	1	0	1	3,797	93	1	0	1
			4	4,104	100	1	0	1	4,019	98	1	0	1	3,823	93	1	0	1
	750mA	60	2	5,918	99	1	0	2	5,795	97	1	0	2	5,512	92	1	0	2
			3	5,823	97	1	0	2	5,702	95	1	0	2	5,424	90	1	0	2
			4	5,863	98	1	0	2	5,741	96	1	0	2	5,461	91	1	0	2
	1050mA	83	2	7,630	92	2	0	2	7,472	90	2	0	2	7,107	86	2	0	2
			3	7,508	90	1	0	2	7,352	89	1	0	2	6,993	84	1	0	2
			4	7,559	91	1	0	2	7,402	89	1	0	2	7,041	85	1	0	2

ELECTRICAL DATA

# OF LEDs	Drive Current (mA)	Input Voltage (V)	Oper. Current (Amps)	System Power (W)
24	350mA	120	0.23	28
		277	0.10	28
		347	0.08	28
		480	0.06	28
	500mA	120	0.34	41
		277	0.15	41
		347	0.12	41
		480	0.09	41
	750mA	120	0.50	60
		277	0.22	60
		347	0.17	60
		480	0.13	60
	1050mA	120	0.69	83
		277	0.30	83
		347	0.24	83
		480	0.17	83

PROJECTED LUMEN MAINTENANCE

Ambient Temperature	OPERATING HOURS					
	0	25,000	50,000	TM-21-11* L96 60,000	100,000	L70 (Hours)
25°C / 77°F	1.00	0.97	0.94	0.93	0.89	>296,000
40°C / 104°F	1.00	0.95	0.91	0.89	0.83	>191,000

* Projected per IESNA TM-21-11* (Nichia 219B, 700mA, 85°C Ts, 10,000hrs). Data references the extrapolated performance projections for the LNC-12LU-5K base model in a 40°C ambient, based on 10,000 hours of LED testing per IESNA LM-80-08.

LNC3

MEDIUM LED LITEPAK

LUMINAIRE AMBIENT TEMPERATURE FACTOR (LATF)

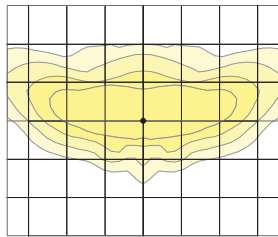
Ambient Temperature		Lumen Multiplier
0° C	32° F	1.02
10° C	50° F	1.01
20° C	68° F	1.00
25° C	77° F	1.00
30° C	86° F	1.00
40° C	104° F	0.99

Use these factors to determine relative lumen output for average ambient temperatures from 0-40°C (32-104°F).

PHOTOMETRY

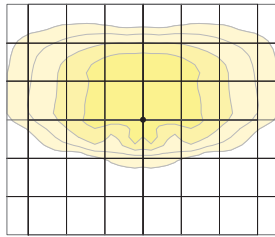
The following diagrams represent the general distribution options offered for this product. For detailed information on specific product configurations, see [website photometric test reports](#).

LNC3 – Type II



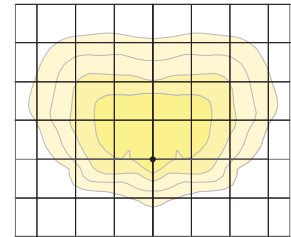
Mounting Height: 15'

LNC3 – Type III



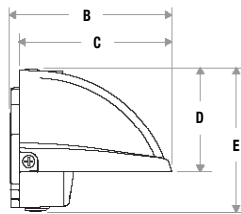
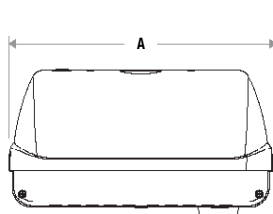
Mounting Height: 15'

LNC3 – Type IV



Mounting Height: 15'

DIMENSIONS



A	B	C	D	E	Weight
13" (330 mm)	10.5" (267 mm)	9.9" (251 mm)	5.8" (147 mm)	8.3" (211 mm)	25.0 lbs 11.3 kg

ADDITIONAL INFORMATION

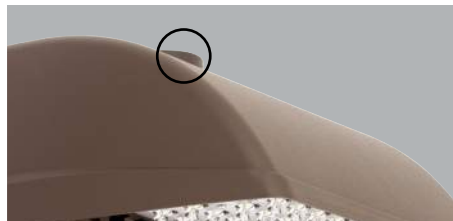
CSU – INVERTED MOUNTING OPTION



*Requires Factory Installed Lens Option

Inverted mounting capabilities for uplighting applications. Specially designed frosted acrylic diffuser option softens output, improves uniformity and protects LED lenses.

SCP – PROGRAMMABLE OCCUPANCY SENSOR



*Photocontrol and Wireless Controls by Others

Standard NEMA 7-Pin receptacle for twist lock photocell or wireless controls (by others).

SCP – PROGRAMMABLE OCCUPANCY SENSOR



Sensor offers greater control and energy savings with SCP programmable sensor with adjustable delay and dimming levels (Factory default is 10%)

Visit: <http://www.hubbelllighting.com/solutions/controls/> for control application information

SHIPPING INFORMATION

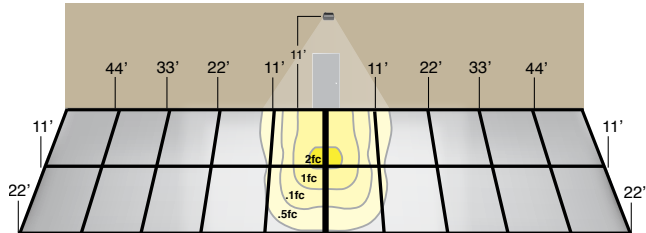
Catalog Number	G.W(kg)/CTN	Carton Dimensions			Carton Qty. per Master Pack
		Length Inch (cm)	Width Inch (cm)	Height Inch (cm)	
LNC3-24LU	18.0 (8.2)	15.8 (40)	11.0 (28)	13.0 (33)	1

LNC3

MEDIUM LED LITEPAK

ADDITIONAL INFORMATION (CONTINUED)

LNC2 - BATTERY BACK UP



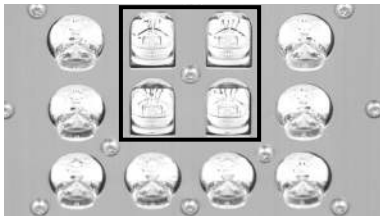
11' Mounting Height

Provides Life Safety Code average illuminance of 1.0 fc. Assumes open space with no obstructions and mounting height of 11'.

Diagrams for illustration purposes only, please consult factory for application layout.

Battery backup units consume 6 watts when charging a dead battery and 2 watts during maintenance charging. EH (units with a heater) consume up to an additional 8 watts when charging if the battery temp is lower than 10°C

E & EH EMERGENCY BATTERY BACKUP



24 High Power LEDs generate up to 7,500 lumens in Normal Mode, and use 4 LEDs for up to 700 lumens in emergency.

USE OF TRADEMARKS AND TRADE NAMES

All product and company names, logos and product identifies are trademarks ™ or registered trademarks ® of Hubbell Lighting, Inc. or their respective owners. Use of them does not necessarily imply any affiliation with or endorsement by such respective owners.



PAVER BENEFITS

- Easy Mechanical Installation
- Reduces Storm Water Runoff and Contaminants
- Helps Recharge Ground Water
- Maintenance Friendly

PERMEABLE MISSION PAVER

[Great Hardscapes Start Here®]

PERMEABLE MISSION

BEAUTIFUL AND SUSTAINABLE

Permeable Mission allows water to drain naturally into the surface, providing safer and drier conditions for pedestrians. These pavers come palletized in a herringbone pattern, ready for mechanical installation to help increase the speed of construction.

COLOURS

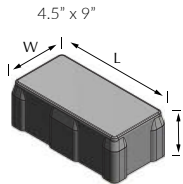


Grey



Charcoal

SPECIFICATIONS



NAME	METRIC DIMENSIONS	IMPERIAL DIMENSIONS	WEIGHT	UNITS/PALLET	SQ. FT./PALLET	APPLICATIONS
Permeable Mission	104mm W x 216.5mm L x 80mm H	4.1" W x 8.52" L x 3.15" H	4.66 kg	228	61.5	
For design consideration add 8mm or .315" to the W and L dimensions to allow for the spacers.						



PEDESTRIAN
Indicates product is suitable for projects with pedestrian use.



LIGHT-DUTY VEHICULAR
Indicates product is suitable for projects with light-duty vehicular use.



HEAVY-DUTY VEHICULAR
Indicates product is suitable for projects with commercial or heavy-duty vehicular use.

PERFORMANCE AND DESIGN

MANUFACTURING STANDARDS

- ASTM Standard C936
- 5% absorption avg (7% max)
- 8000 psi average
- Height tolerance +/- 3.2 mm
- 7,200 psi min unit
- Dimensional accuracy +/- 1.6 mm



MECHANICAL INSTALLATION
This product is manufactured for mechanical installation. A labor saving option for large installations.



NO CRACKING
Basalite pavers are a flexible system, allowing for movement without jeopardizing the structural integrity.



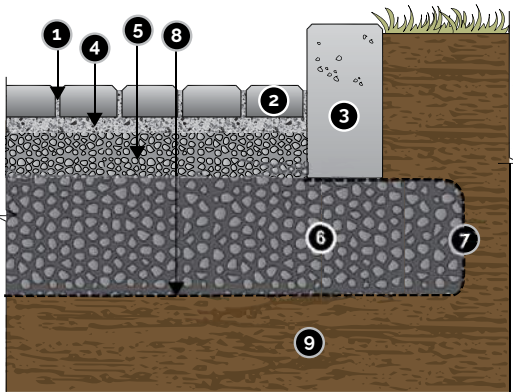
DURABLE AND STRONG
Basalite pavers are 4 times stronger than poured concrete and have a better life-cycle cost than other products.



LESS MAINTENANCE
Basalite pavers require less maintenance than other products and can be used for pedestrian and vehicular use.

APPLICATION METHODS

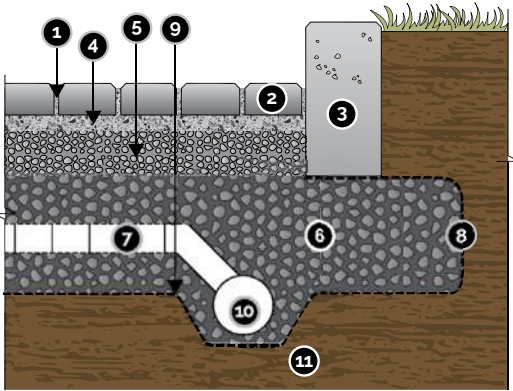
EXFILTRATION TO SOIL SUBGRADE



- 1 NO. 8, 89 or 9 aggregate in openings
- 2 Permeable pavers min. 3 1/8" (80 mm) thick
- 3 Curb/edge restraint with cut-outs for overflow drainage (curb shown)
- 4 Bedding course 1-1/2" to 2" (40-50 mm) thick Type NO. 8 aggregate
- 5 4" (100 mm) thick NO. 57 stone open-graded base
- 6 Min. 6" (150 mm) thick NO. 2 stone subbase
- 7 Geotextile on top and sides of subbase
- 8 Optional Geotextile on bottom
- 9 Soil subgrade

- NOTES:
- 3 1/8" (80 mm) thick pavers may be used in pedestrian, residential and commercial applications.
 - NO. 2 stone subbase thickness varies with site specific design. Consult ICPI permeable interlocking concrete pavement manual.
 - NO. 2 stone may be substituted with NO. 3 or NO. 4 stone.

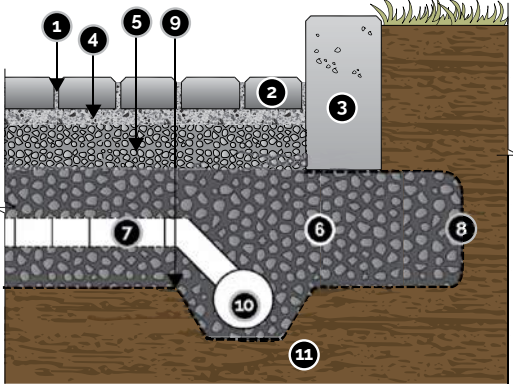
PARTIAL EXFILTRATION TO SOIL SUBGRADE



- 1 NO. 8, 89 or 9 aggregate in openings
- 2 Permeable pavers min. 3 1/8" (80 mm) thick for vehicular traffic (aspect ratio <3)
- 3 Curb/edge restraint with cut-outs for overflow drainage (curb shown)
- 4 Bedding course 1-1/2" to 2" (40-50 mm) thick Type NO. 8 aggregate
- 5 4" (100 mm) thick NO. 57 stone open-graded base
- 6 Min. 6" (150 mm) thick NO. 2 stone subbase
- 7 Perforated pipes spaced and slopped to drain stored water
- 8 Geotextile on top and sides of subbase under/beyond curb
- 9 Geotextile on subgrade per design engineer
- 10 Non-perforated outfall pipe(s) sloped to storm sewer or stream
- 11 Soil subgrade sloped to drain

- NOTES:
- 3 1/8" (80 mm) thick pavers may be used in pedestrian, residential and commercial applications.
 - NO. 2 stone subbase thickness varies with site specific design. Consult ICPI permeable interlocking concrete pavement manual.
 - NO. 2 stone may be substituted with NO. 3 or NO. 4 stone.

NO EXFILTRATION TO SOIL SUBGRADE



- 1 NO. 8, 89 or 9 aggregate in openings
- 2 Permeable pavers min. 3 1/8" (80 mm) thick for vehicular traffic (aspect ratio <3)
- 3 Curb/edge restraint with cut-outs for overflow drainage (curb shown)
- 4 Bedding course 1-1/2" to 2" (40-50 mm) thick Type NO. 8 aggregate
- 5 4" (100 mm) thick NO. 57 stone open-graded base
- 6 Min. 6" (150 mm) thick NO. 2 stone subbase
- 7 Perforated pipes spaced and slopped to drain stored water
- 8 Geotextile on top and sides of subbase under/beyond curb
- 9 Geotextile on subgrade per design engineer
- 10 Non-perforated outfall pipe(s) sloped to storm sewer or stream
- 11 Soil subgrade sloped to drain

- NOTES:
- 3 1/8" (80 mm) thick pavers may be used in pedestrian, residential and commercial applications.
 - NO. 2 stone subbase thickness varies with site specific design. Consult ICPI permeable interlocking concrete pavement manual.
 - NO. 2 stone may be substituted with NO. 3 or NO. 4 stone.