

# CARMEL-BY-THE-SEA, CA PLANNING FOR OUR URBAN FOREST

Presented by Davey Resource Group, Inc.

Funding for this project was provided by the California Department of Forestry and Fire Protection as part of the California Climate Investments Program.



# THIS PRESENTATION



PLAN  
DEVELOPMENT



DISTRIBUTION  
OF  
TREE CANOPY



COMMUNITY  
TREE  
RESOURCE



URBAN  
FORESTRY  
SERVICES



COMMUNITY  
VISION



# PLAN DEVELOPMENT



# THE URBAN FOREST

- Community trees (public trees)
  - Public rights-of-way (street trees)
  - Parks and natural areas
  - Trees at city facilities
- Private trees
  - Residential
  - Commercial
  - Industrial zones



# PLAN DEVELOPMENT

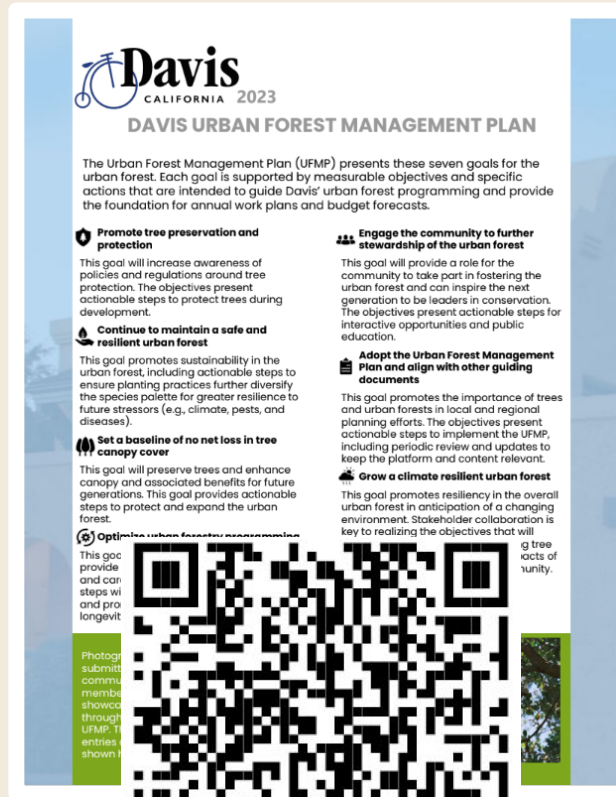
- Kickoff – January 2023
- Community tree resource analysis
- Tree canopy and land cover assessment
- Recommended Species List
- Background review
  - Current policies
  - Operations and funding
- Community and stakeholder engagement
- Urban Forest Management Plan (UFMP)
  - Drafts (2)
  - Final



# CARMEL'S MANAGEMENT PLAN

- Illustrate the value and benefit of community trees
- Communicate challenges and opportunities
- Promote shared vision
- Ensure resources are in place to support community goals

# EXAMPLE URBAN FOREST MANAGEMENT PLANS

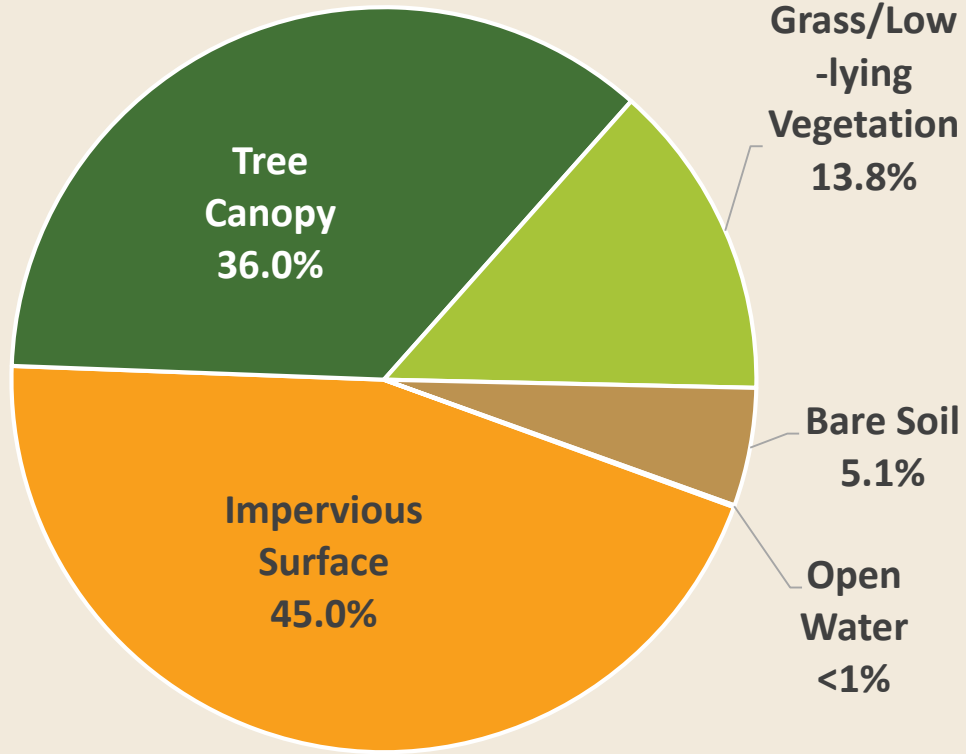




# DISTRIBUTION OF TREE CANOPY



# LAND COVER

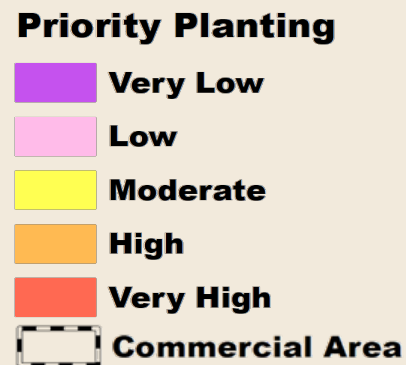


- 676 total acres
- 243 acres of tree canopy
- 36% tree canopy

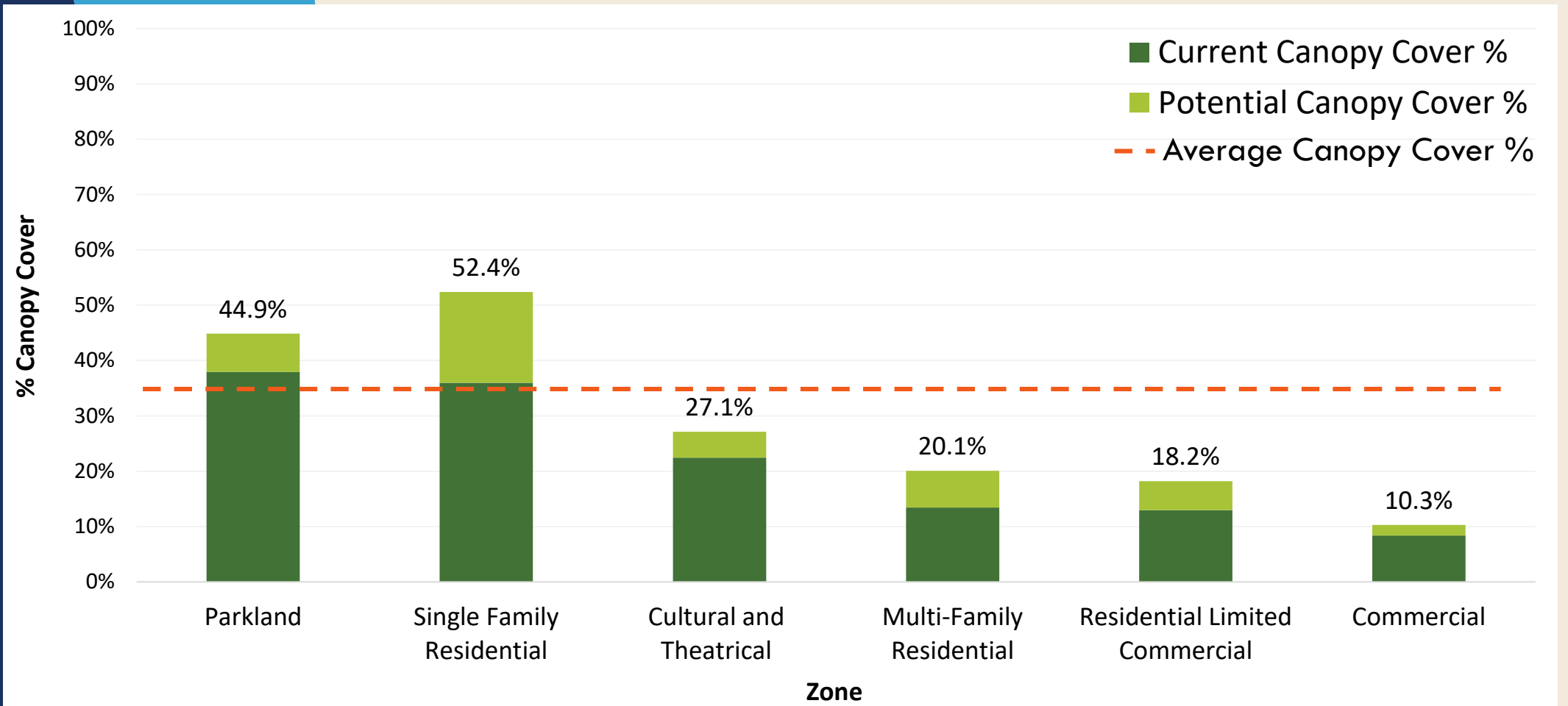


# PLANTING POTENTIAL

- 79 acres residential areas
  - 21 acres high or very high priority
  - 3,621 potential planting sites
- 2 acres commercial areas
  - 1 acre high or very high priority
  - 99 potential planting sites
- Prioritization based on stormwater management and canopy continuity

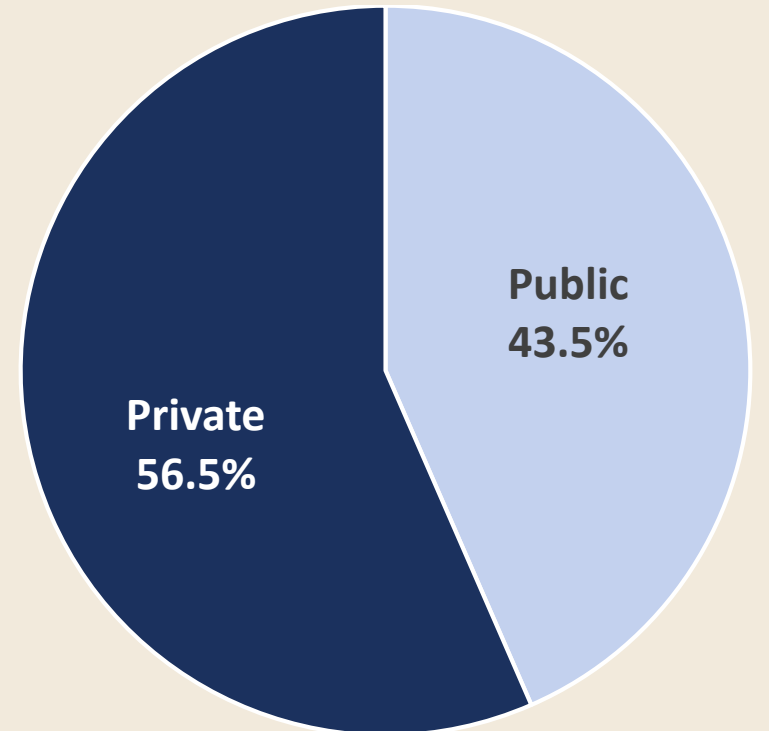


# CANOPY BY ZONING



# PUBLIC V. PRIVATE CANOPY COVER

- 106 acres on public property
  - 40% tree canopy cover
  - 47% potential canopy cover
- 138 acres on private property
  - 33% tree canopy cover
  - 49% potential canopy cover



Canopy Distribution



# COMMUNITY TREE RESOURCE

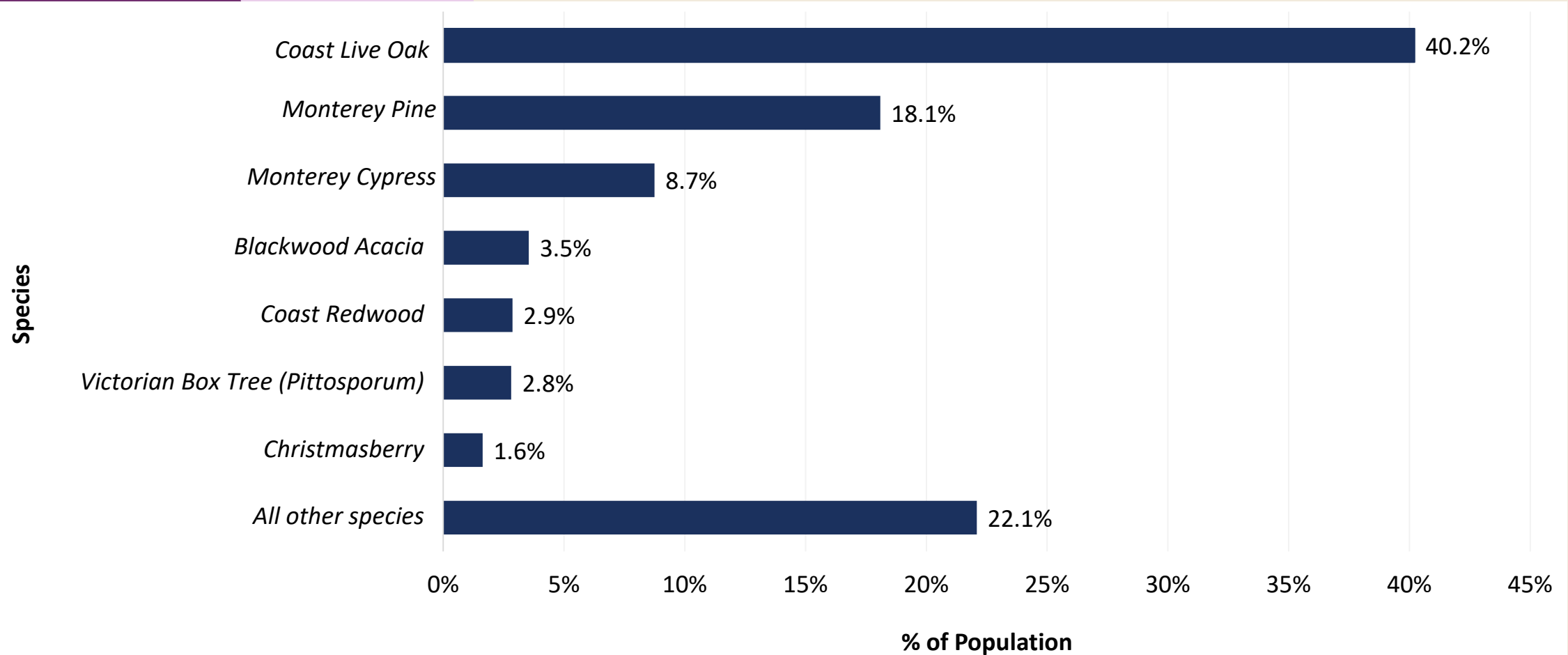


# COMMUNITY TREE RESOURCE

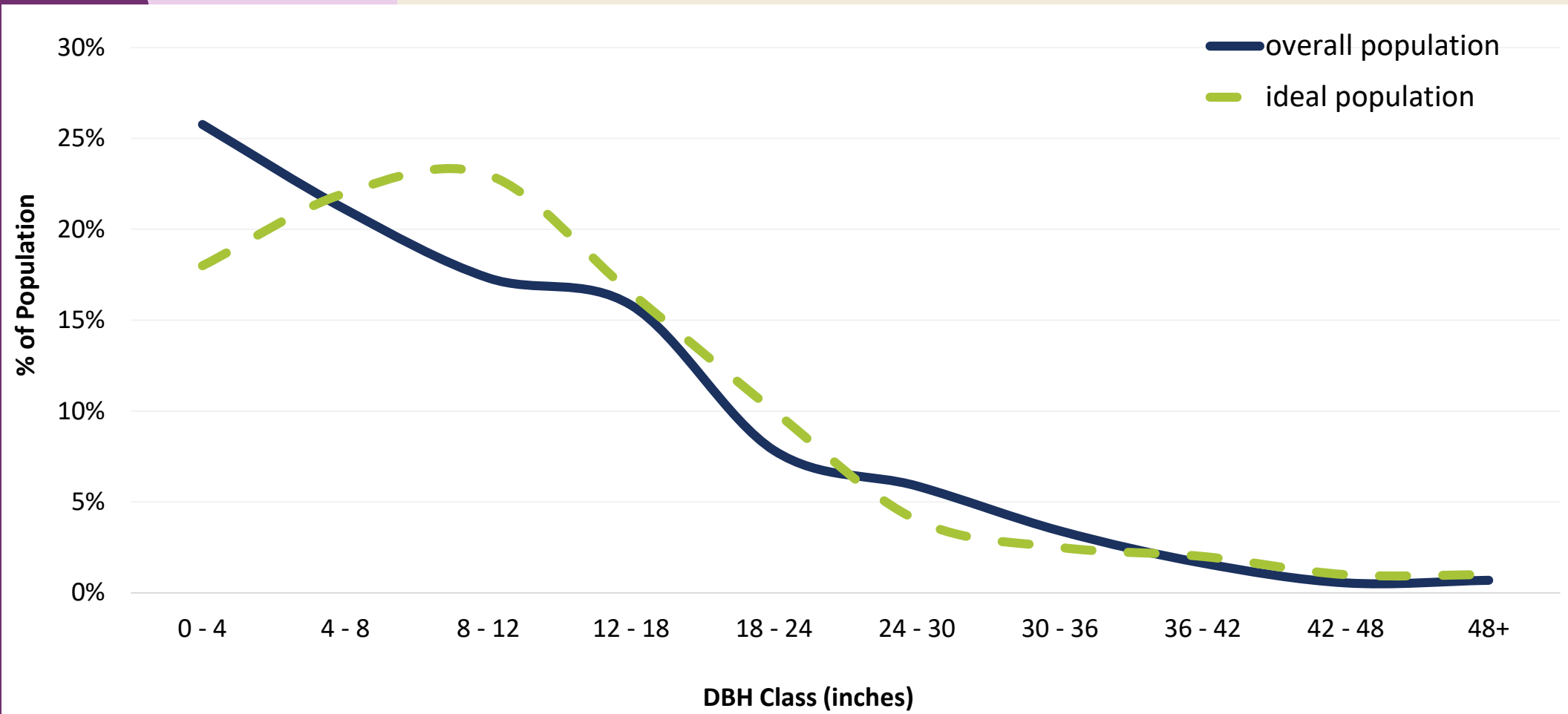
- 9,875 trees
- 1,118 potential planting sites
- 4,412 tons of carbon stored
- \$25.2 million to replace



# SPECIES DIVERSITY



# AGE DISTRIBUTION





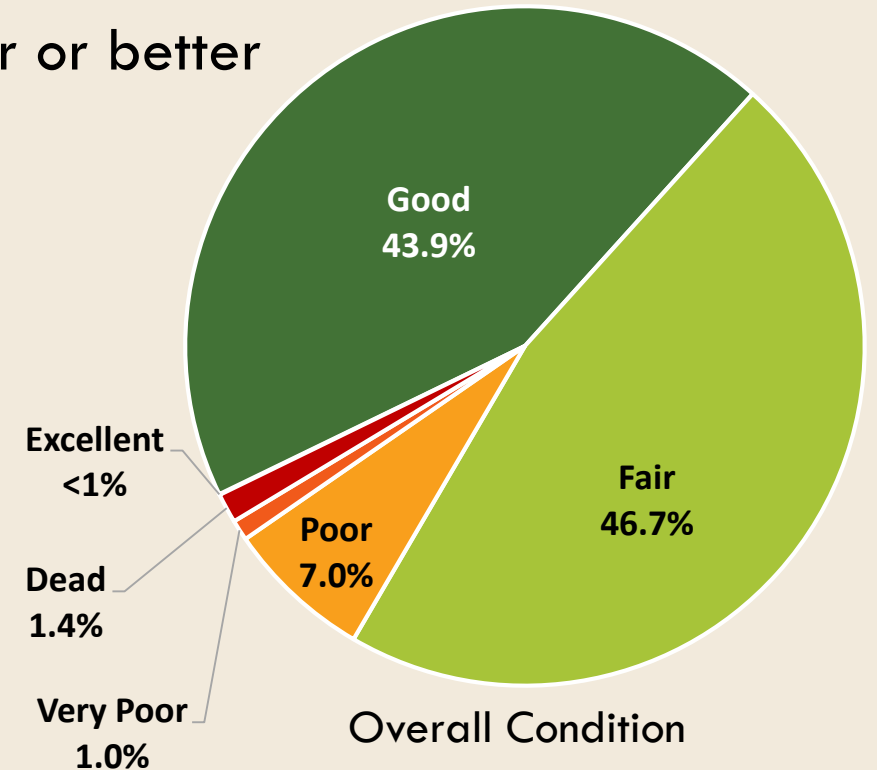
# ANNUAL BENEFITS FROM COMMUNITY TREES

- 582,667 gallons of stormwater runoff avoided
- 3 tons of air pollutants removed
  - \$22,420 savings from fewer adverse health incidents
- 115 tons of carbon directly sequestered



# TREE CONDITION

- Trees <8" DBH – 94% in fair or better
- Trees 9 to 12" DBH – 87% in fair or better
- Trees >24" – 88% in fair or better
  - 12% in poor or worse



# TREE CONDITION

- 10% of trees in poor or worse condition
  - 687 Poor
  - 96 Very Poor
  - 139 Dead

Trees >19 inches

- Poor – 687
- Very Poor – 96
- Dead – 139

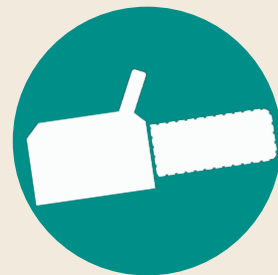




# URBAN FORESTRY SERVICES

# URBAN FORESTRY OPERATIONS

- Annual Services
  - ~300 trees pruned
  - ~150 trees removed
  - ~80 trees planted
  - Inspections for pests & pathogens





# COMMUNITY VISION



# BREAKOUT SESSION

1. Guidelines
2. Workbooks
3. Discussion (~15 minutes/topic)
4. Reporting



# #1 CANOPY GOALS

Should canopy cover be maintained, increased, or reduced? What should the canopy goal be?

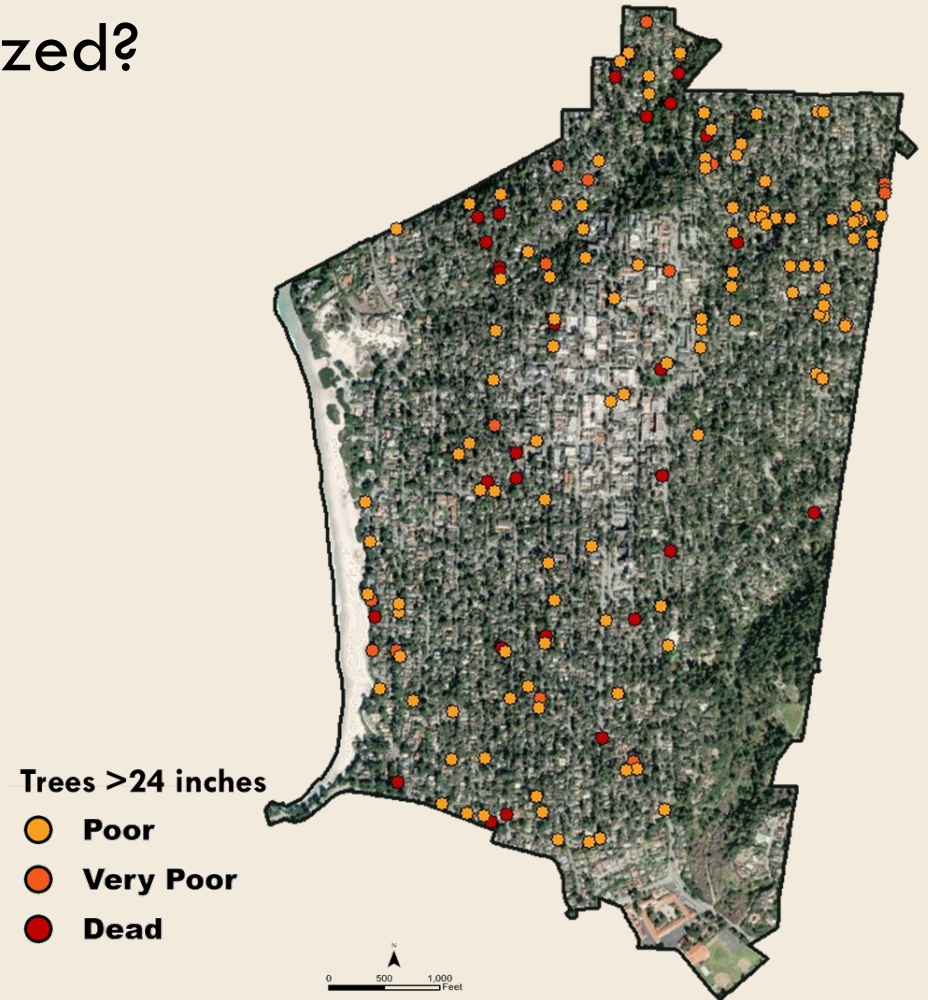
- Overall
- Commercial areas
- Residential areas
- Parks/open space

Current tree canopy cover = 36%



# #2 GEOGRAPHIC PRIORITY

As community trees are removed, where should replanting be prioritized?



A large, abstract orange shape on the left side of the slide, resembling a stylized leaf or a drop with a tail, extending from the top to the bottom.

# #3 SPECIES CHARACTERISTICS

1. What tree characteristics are most important (e.g., shade, fruit, color, etc.)?
2. What species or types of trees should be added to or excluded from the Recommended Species List?
  - Why?

A large, abstract orange shape on the left side of the slide, resembling a stylized flame or a drop with a tail, extending from the top to the bottom.

# GROUP REPORTING & DISCUSSION

#1 Canopy Goals

#2 Geographic Priority

#3 Species Characteristics

# THANK YOU

Tina McKeand

928-246-7048

tina.mckeand@davey.com

Allison Serafin Steere

303-921-5641

allison.steere@davey.com

# TAKE THE SURVEY!

Available on the City website on the Forest, Parks, and Beach page starting the week of 07/17/2023.

Paper copies will be available at Public Works, and may be returned to Public Works or City Hall.